

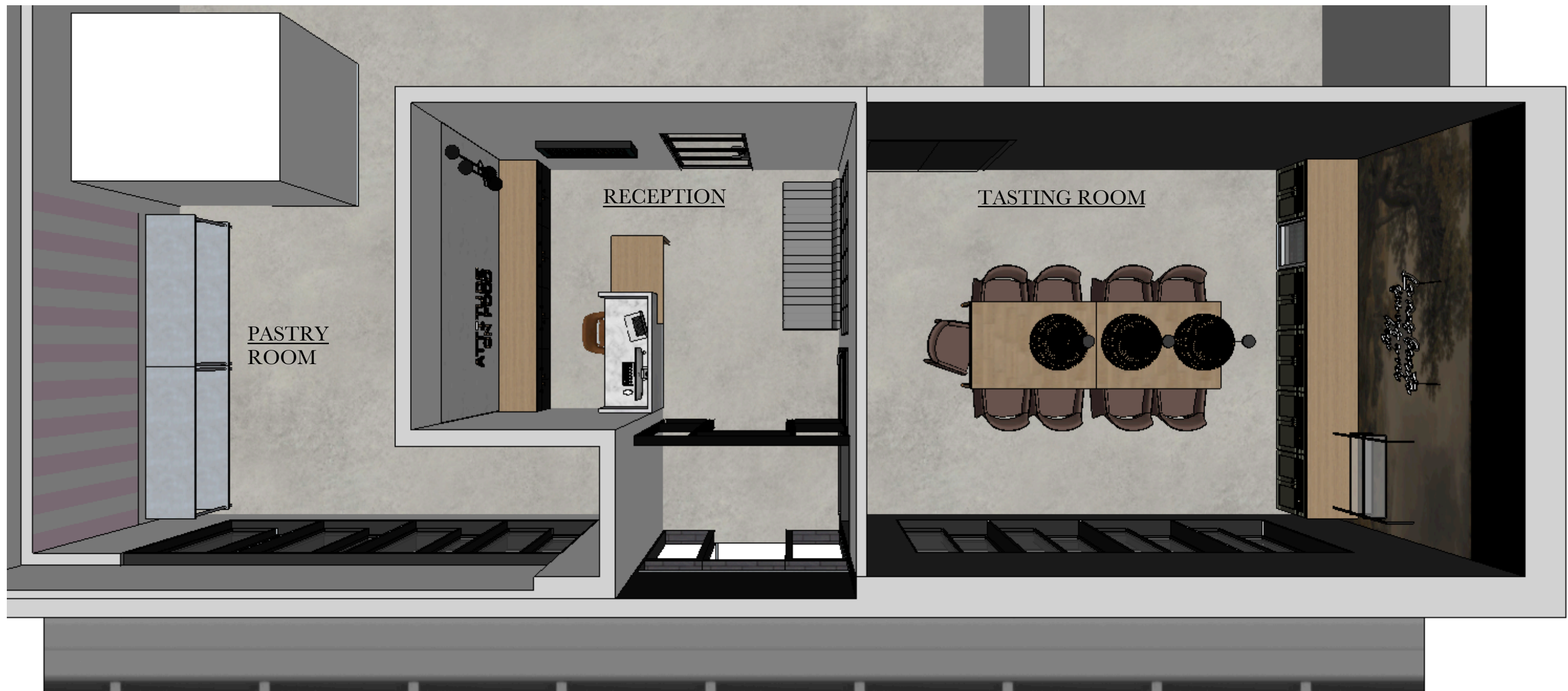


Attitude on Food | Headquarters

IS+DS's ownership shall include any copyrights, trademarks, patents, or proprietary right existing in the design. IS+DS shall retain specific design for client, including any drawings, renderings, sketches, samples, or other materials prepared by IS+DS during the course of the project. Client receives copies not to be duplicated for resale purpose.

Address: 7758 Cass St, Omaha
Construction dates: Summer-Fall 2024
Contractor: Ideal Construction

Updated: July 1, 2024

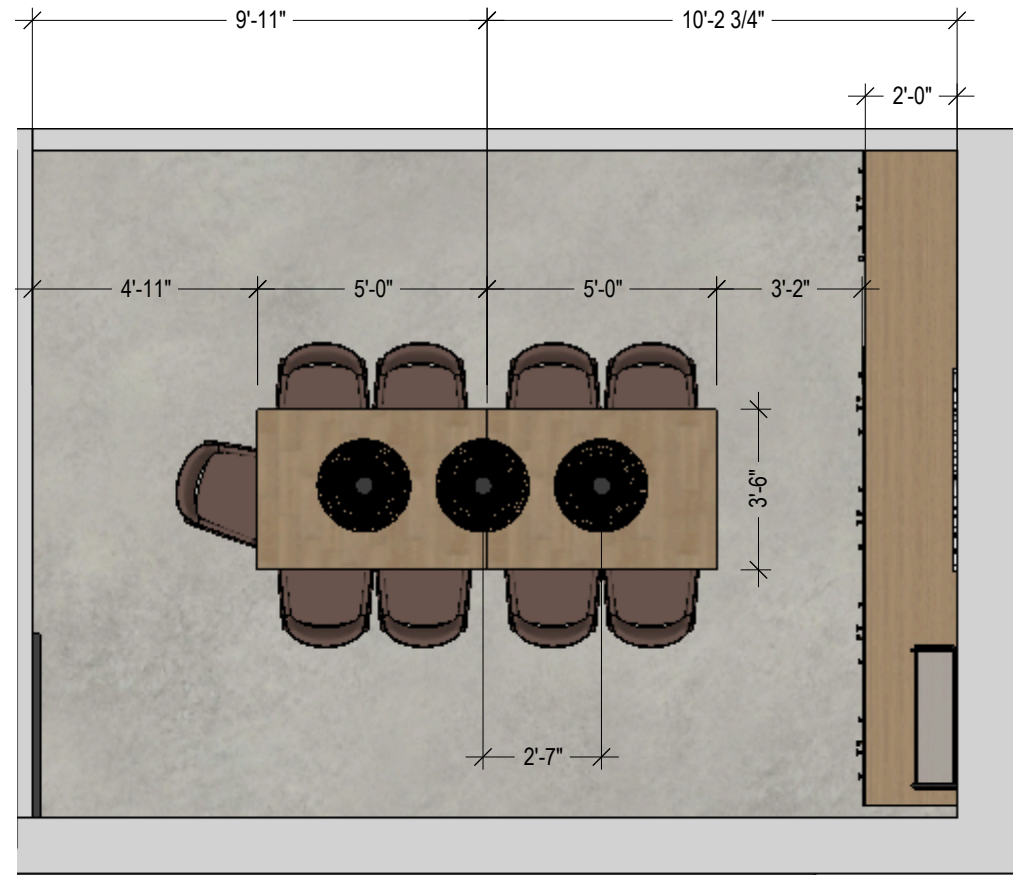


NOTE TO CONTRACTORS + TRADES

Contractor, builder, and all other trades must verify and confirm all dimensions and on site conditions independently before proceeding with any work. Failure to do so absolves IS+DS and its employees from any and all responsibility with work performed. Do not scale drawing. For discussion purposes only.







wallpaper applied to bottom of tresses, solid paint above wallpaper line to match the ceiling

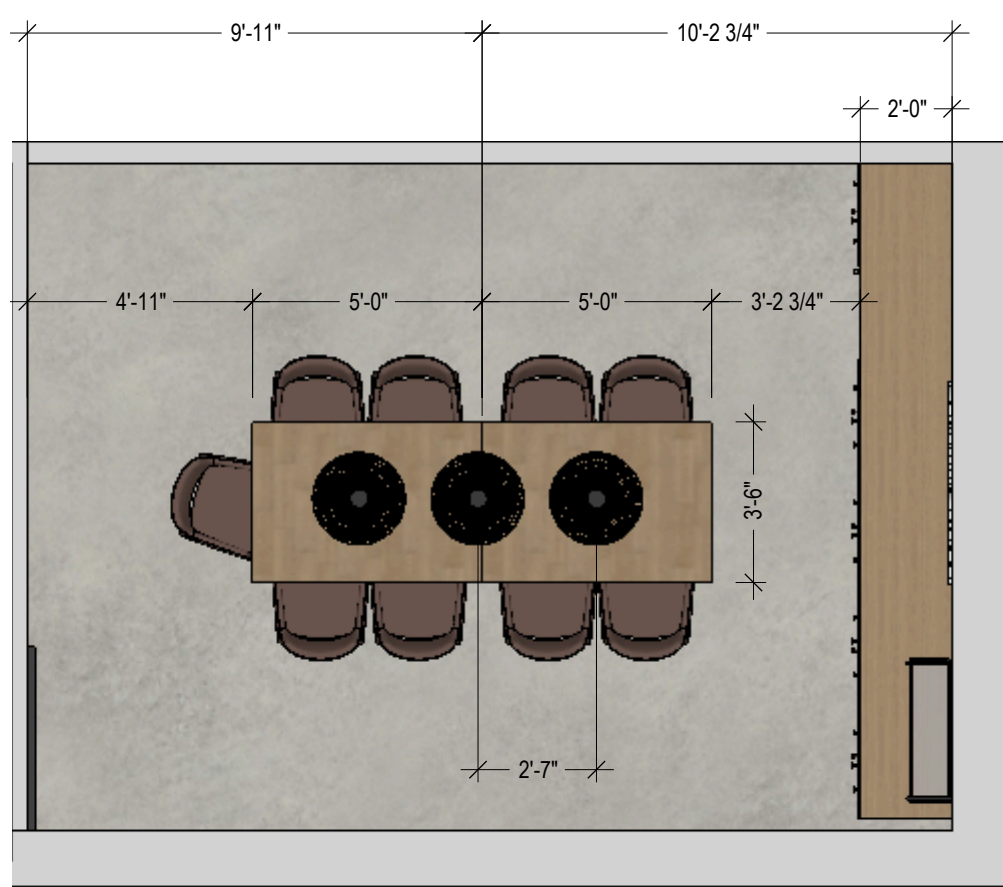
L-1 (see selections for actual image/ verbiage)



Run tube for power into the base cabinets for a clean hang of the neon light without exposed power cords. This should be hung and test fit PRIOR to wallpaper installation

NOTE TO CONTRACTORS + TRADES

Contractor, builder, and all other trades must verify and confirm all dimensions and on site conditions independently before proceeding with any work. Failure to do so absolves IS+DS and its employees from any and all responsibility with work performed. Do not scale drawing. For discussion purposes only.



Dimensions

- Overall Dimensions: 23.5"W x 23.5"D x 12.5"H
- Product Weight: 3 Lbs
- Glass Shade Dimensions: 6"Dia X 5.5"H
- Shade Dimensions: 23.5"Dia x 12.5"H
- Canopy Dimensions: 4.5"Dia
- Cord Length: 118"



NOTE TO CONTRACTORS + TRADES

Contractor, builder, and all other trades must verify and confirm all dimensions and on site conditions independently before proceeding with any work. Failure to do so absolves IS+DS and its employees from any and all responsibility with work performed. Do not scale drawing. For discussion purposes only.

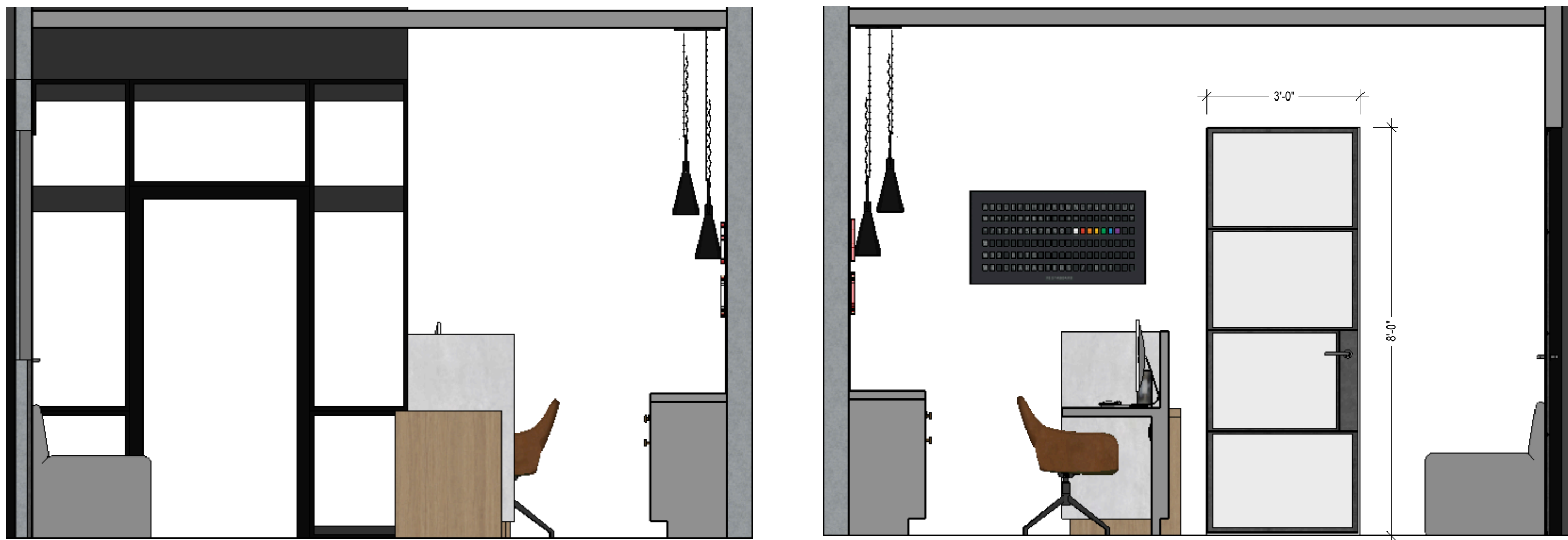
VESTA BOARD
- CONFER WITH NATHAN ON SPECS OF UNIT FOR ELECTRICAL NEEDS





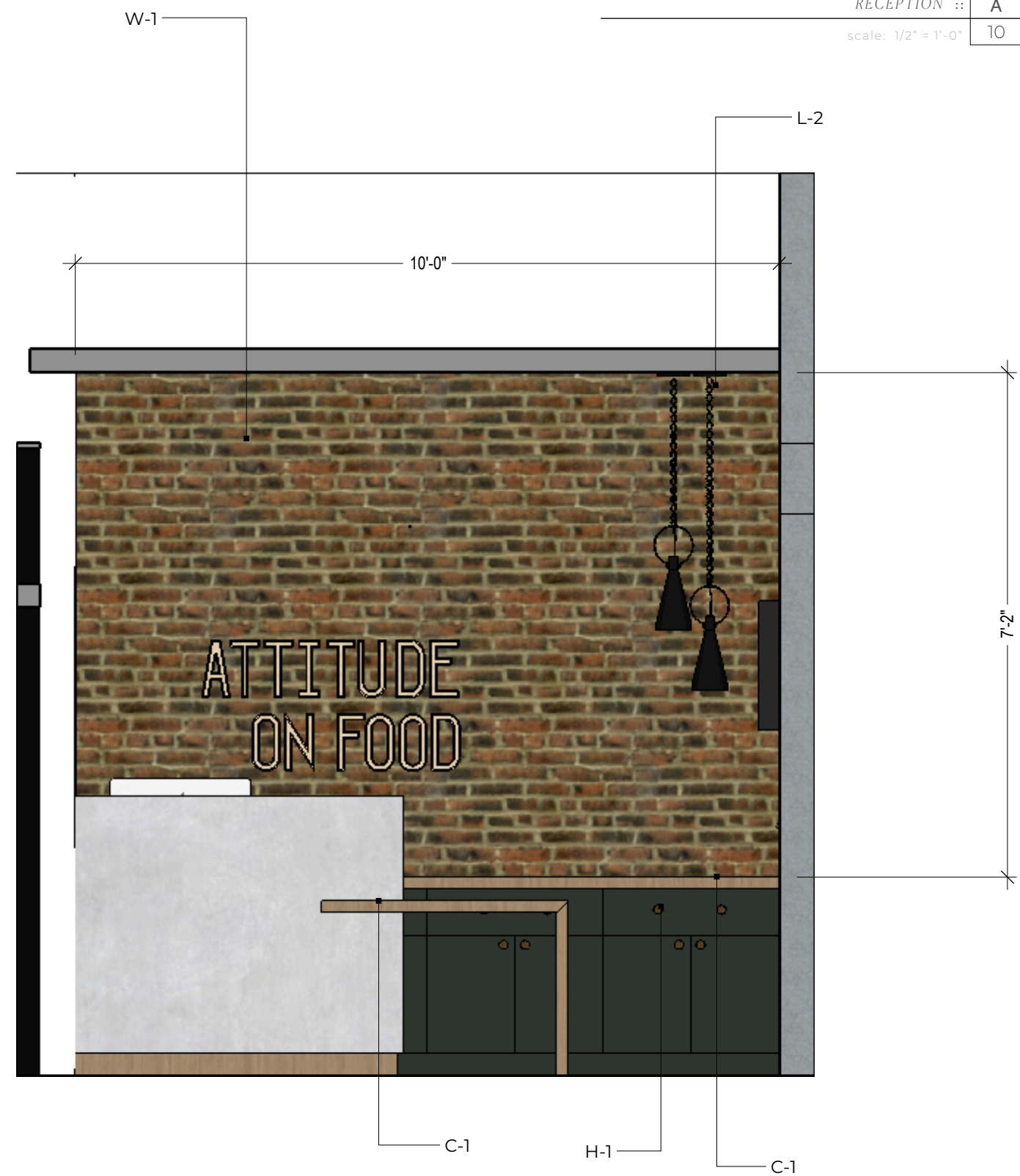
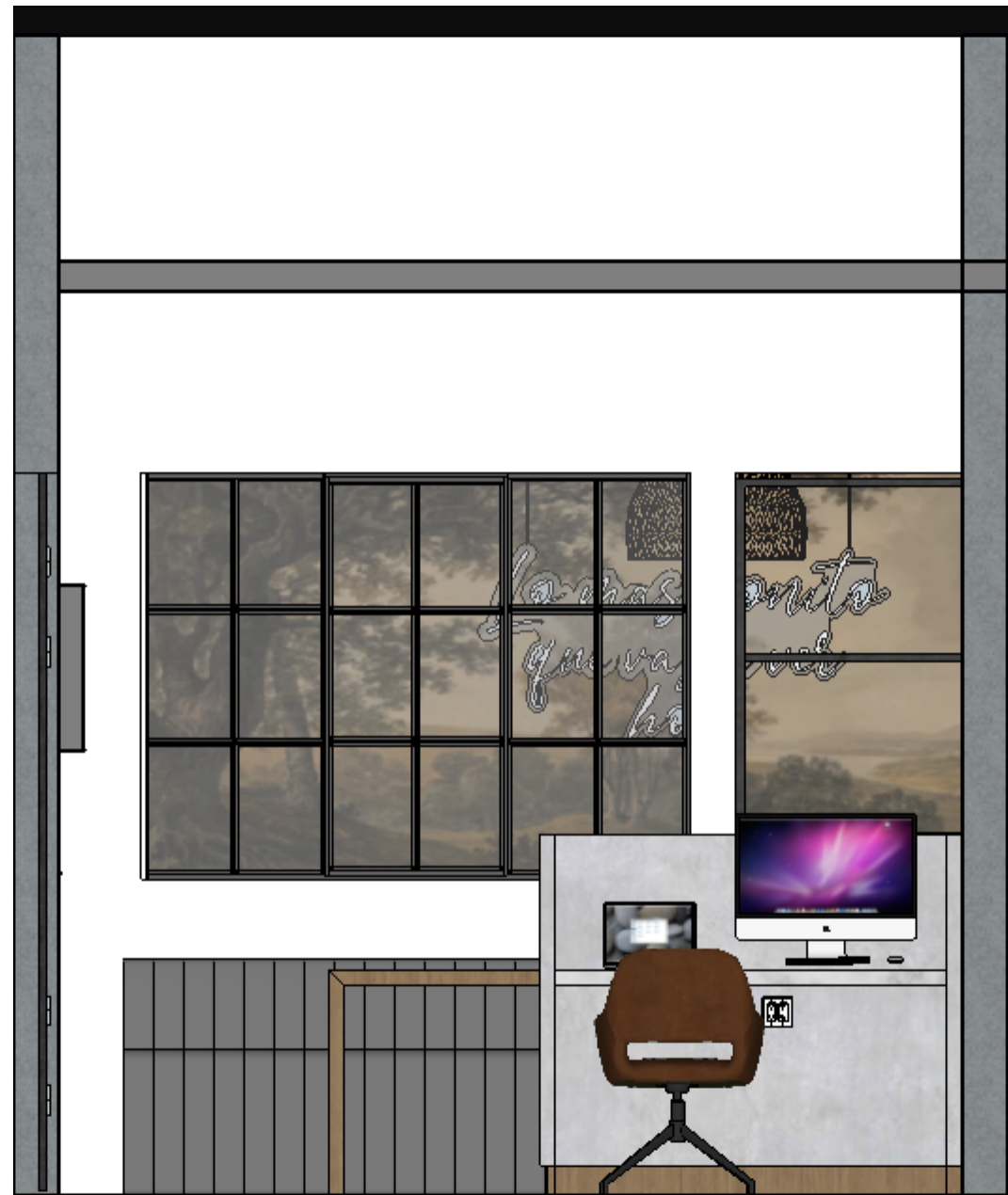


overfill grout joints to be flush with the brick face



NOTE TO CONTRACTORS + TRADES

Contractor, builder, and all other trades must verify and confirm all dimensions and on site conditions independently before proceeding with any work. Failure to do so absolves IS+DS and its employees from any and all responsibility with work performed. Do not scale drawing. For discussion purposes only.



NOTE TO CONTRACTORS + TRADES

Contractor, builder, and all other trades must verify and confirm all dimensions and on site conditions independently before proceeding with any work. Failure to do so absolves IS+DS and its employees from any and all responsibility with work performed. Do not scale drawing. For discussion purposes only.



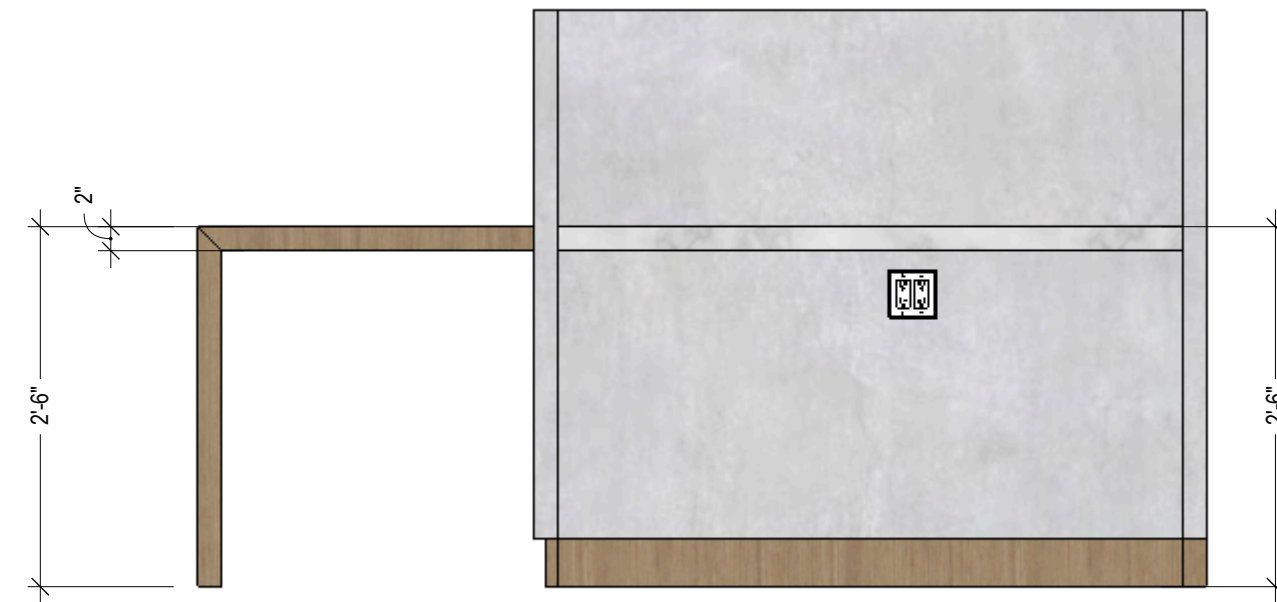
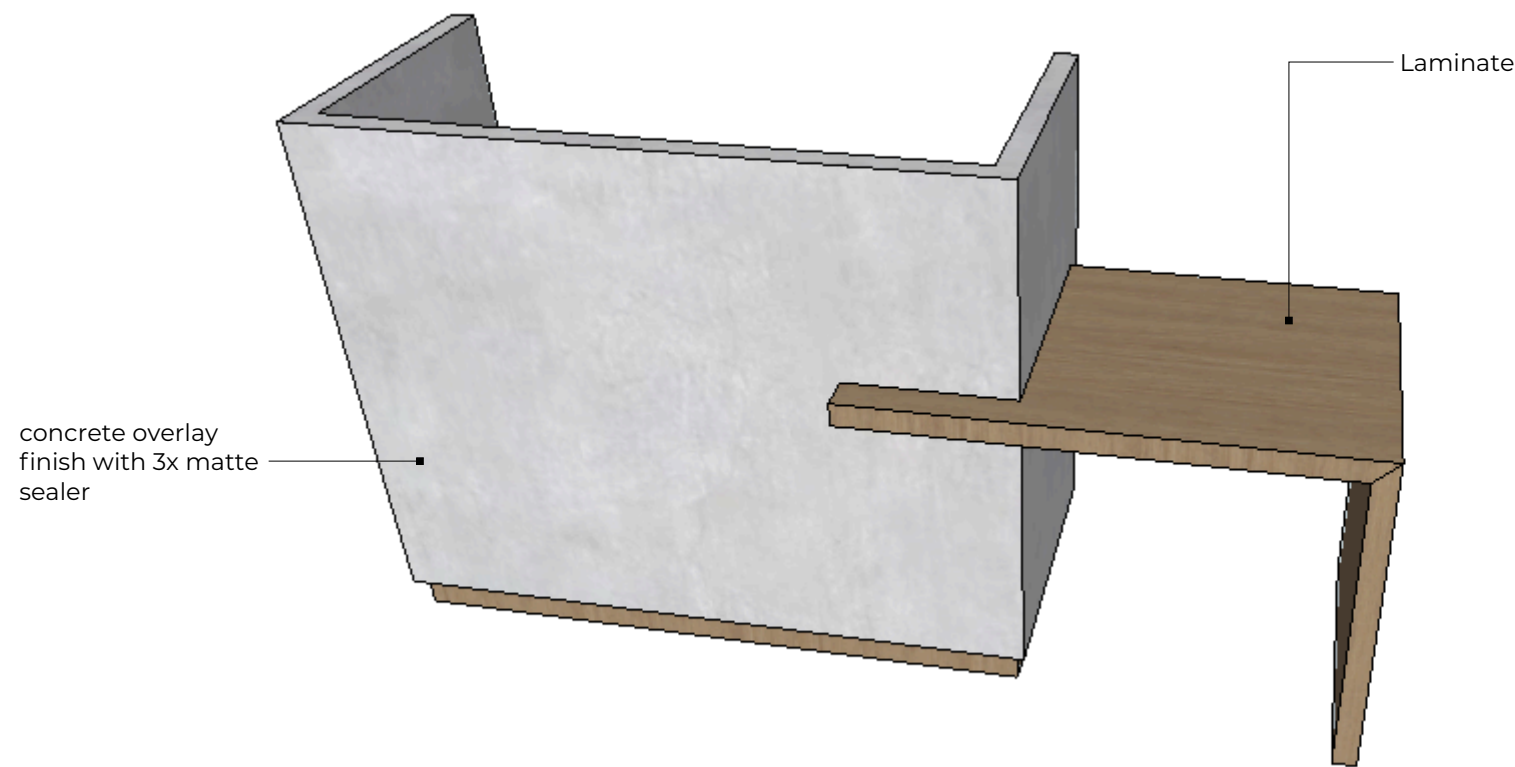
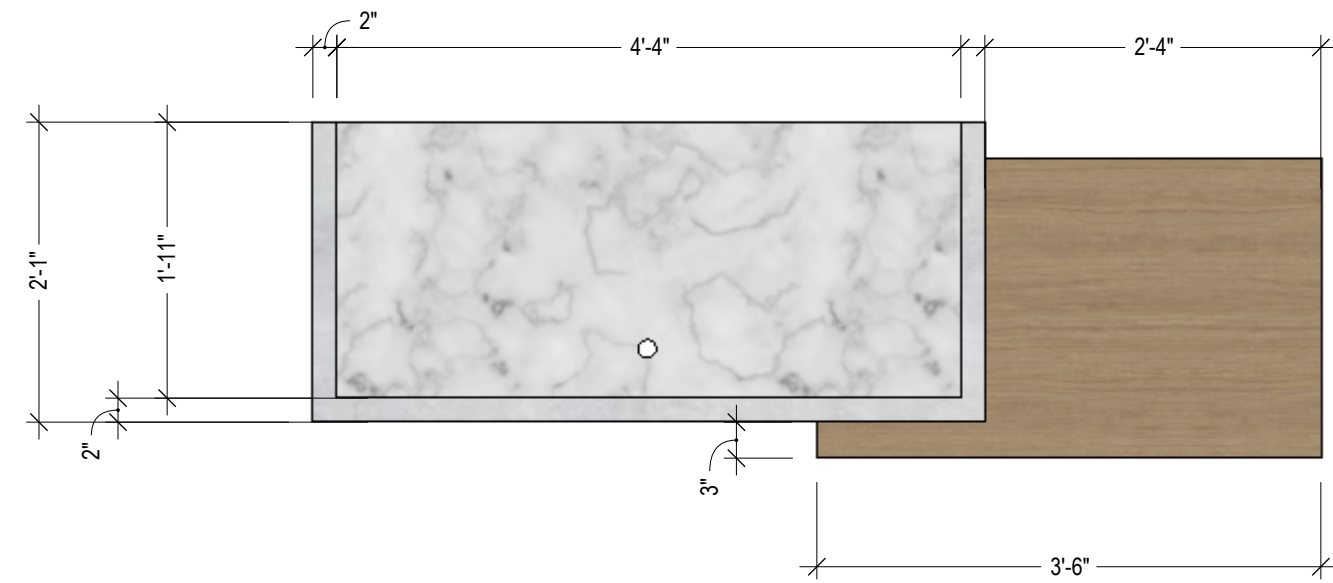
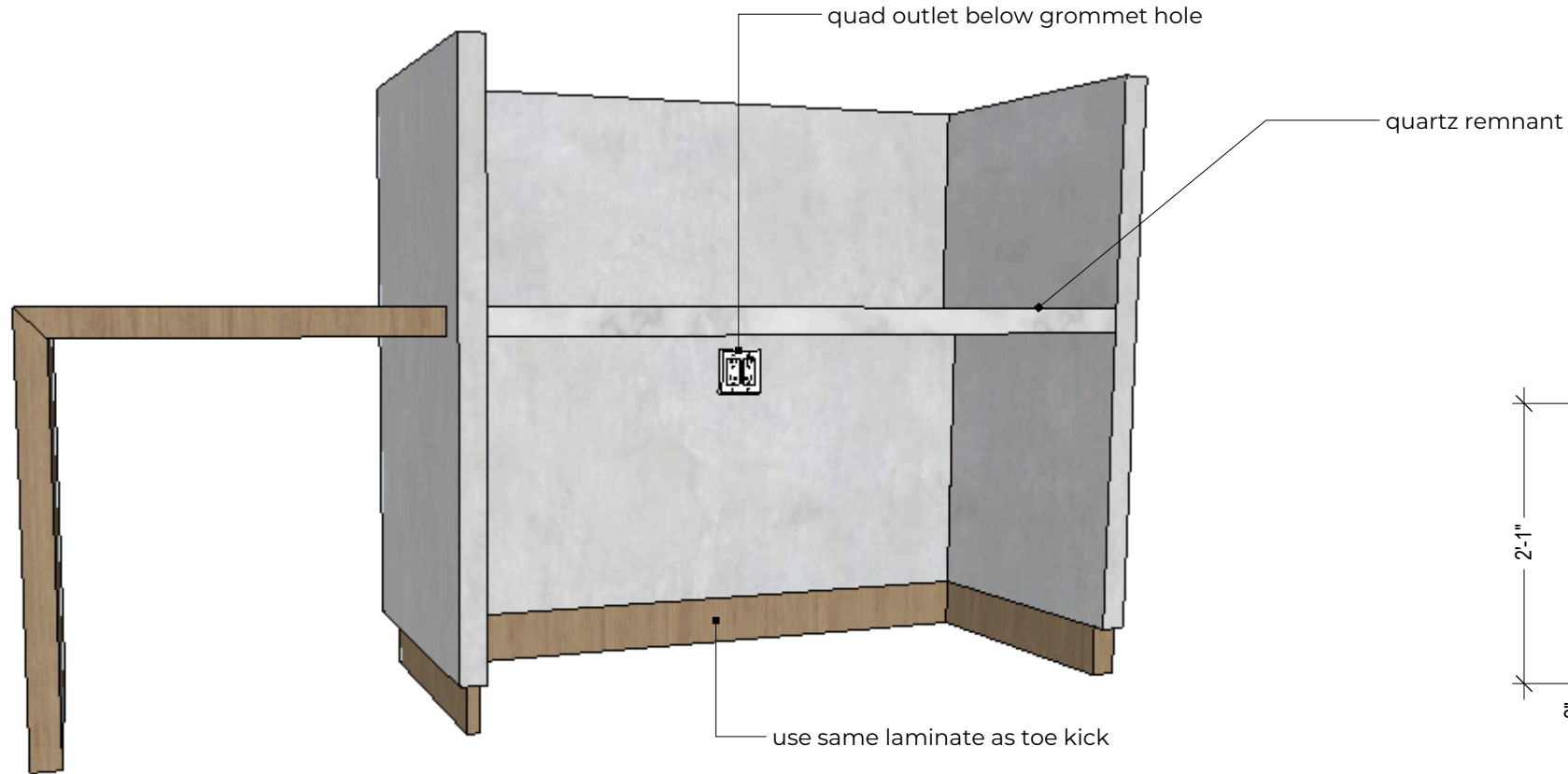
Interior window- single pane glass. Add window mullions

8'-0"

2'-6"

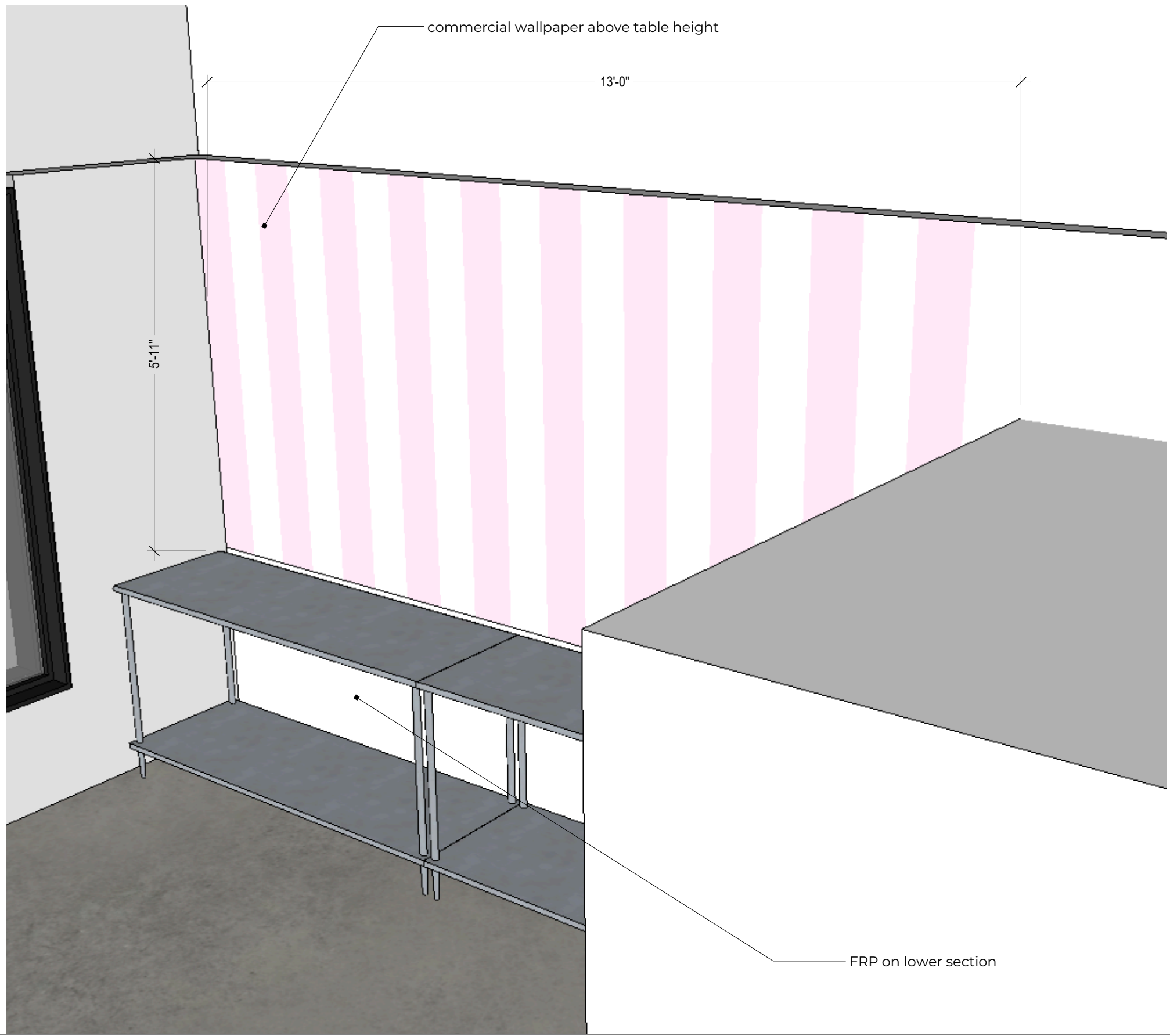
NOTE TO CONTRACTORS + TRADES

Contractor, builder, and all other trades must verify and confirm all dimensions and on site conditions independently before proceeding with any work. Failure to do so absolves IS+DS and its employees from any and all responsibility with work performed. Do not scale drawing. For discussion purposes only.



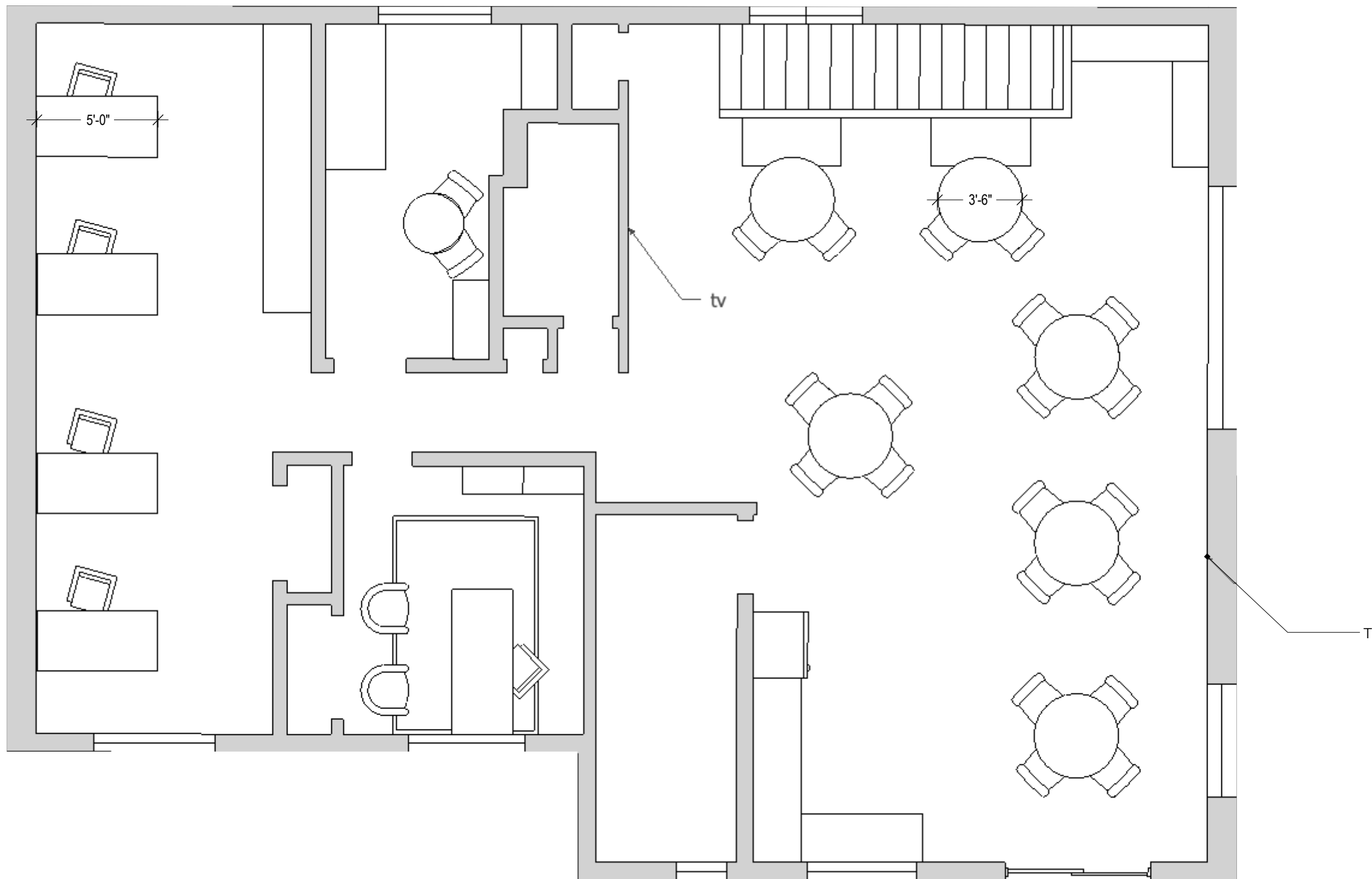
NOTE TO CONTRACTORS + TRADES

Contractor, builder, and all other trades must verify and confirm all dimensions and on site conditions independently before proceeding with any work. Failure to do so absolves IS+DS and its employees from any and all responsibility with work performed. Do not scale drawing. For discussion purposes only.



NOTE TO CONTRACTORS + TRADES

Contractor, builder, and all other trades must verify and confirm all dimensions and on site conditions independently before proceeding with any work. Failure to do so absolves IS+DS and its employees from any and all responsibility with work performed. Do not scale drawing. For discussion purposes only.



NOTE TO CONTRACTORS + TRADES

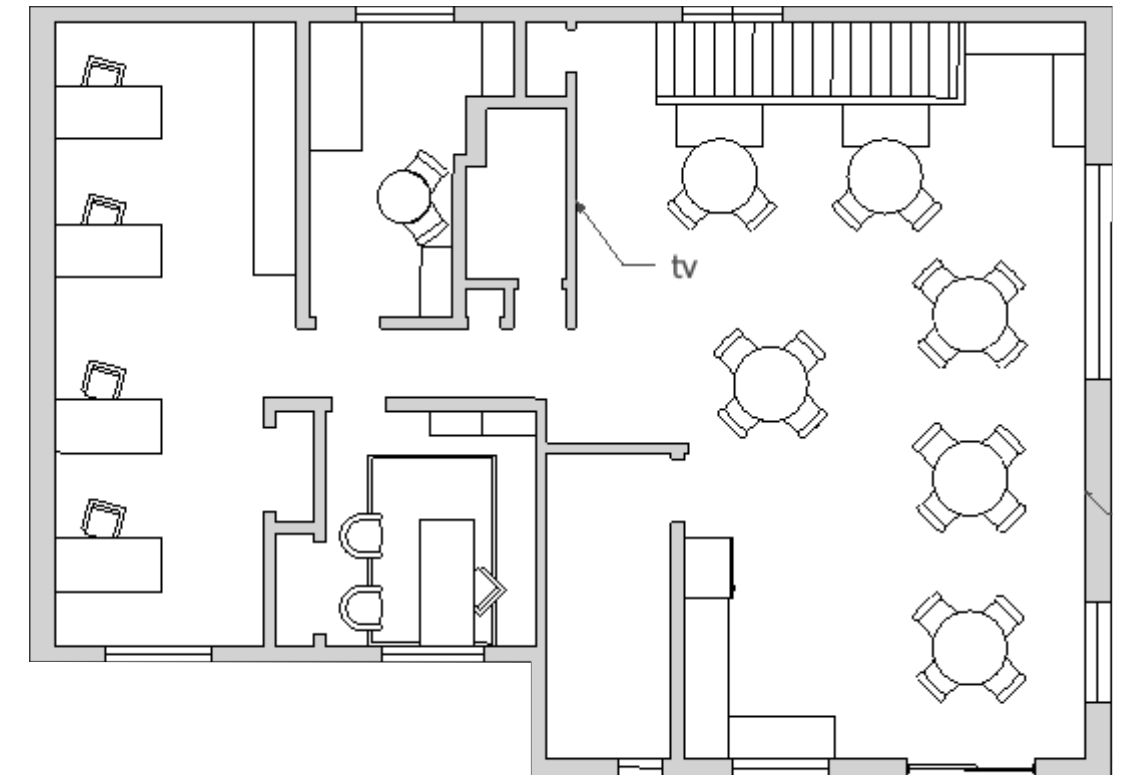
Contractor, builder, and all other trades must verify and confirm all dimensions and on site conditions independently before proceeding with any work. Failure to do so absolves IS+DS and its employees from any and all responsibility with work performed. Do not scale drawing. For discussion purposes only.



NOTE TO CONTRACTORS + TRADES

Contractor, builder, and all other trades must verify and confirm all dimensions and on site conditions independently before proceeding with any work. Failure to do so absolves IS+DS and its employees from any and all responsibility with work performed. Do not scale drawing. For discussion purposes only.

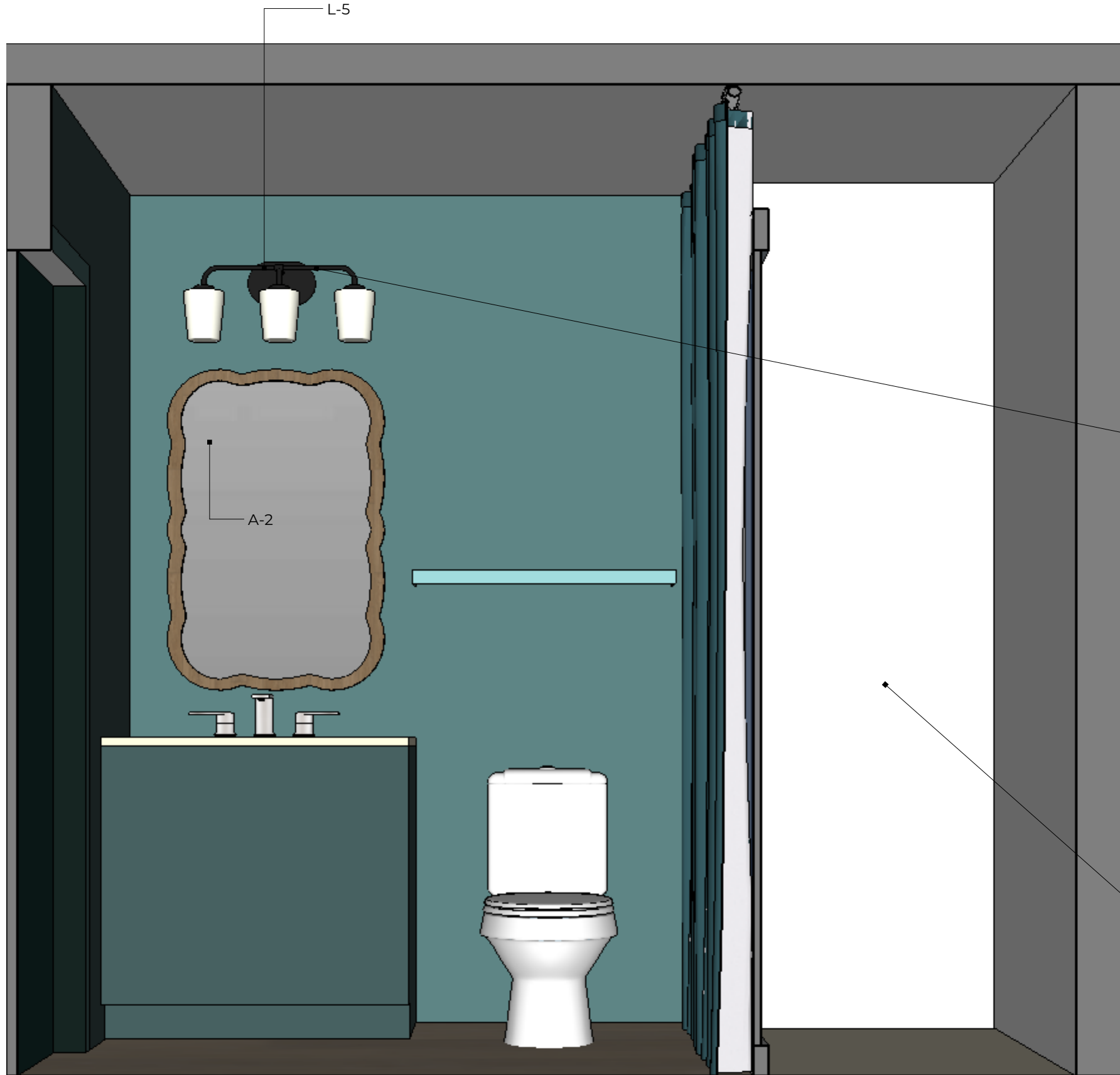
take this (currently) half wall to the ceiling.
Add steel-look mullion window





NOTE TO CONTRACTORS + TRADES

Contractor, builder, and all other trades must verify and confirm all dimensions and on site conditions independently before proceeding with any work. Failure to do so absolves IS+DS and its employees from any and all responsibility with work performed. Do not scale drawing. For discussion purposes only.



swap out light fixture and mirror
KEEP vanity cabinet and countertop
Paint all walls, trim, doors, and cabinet

shower stays AS IS.

NOTE TO CONTRACTORS + TRADES

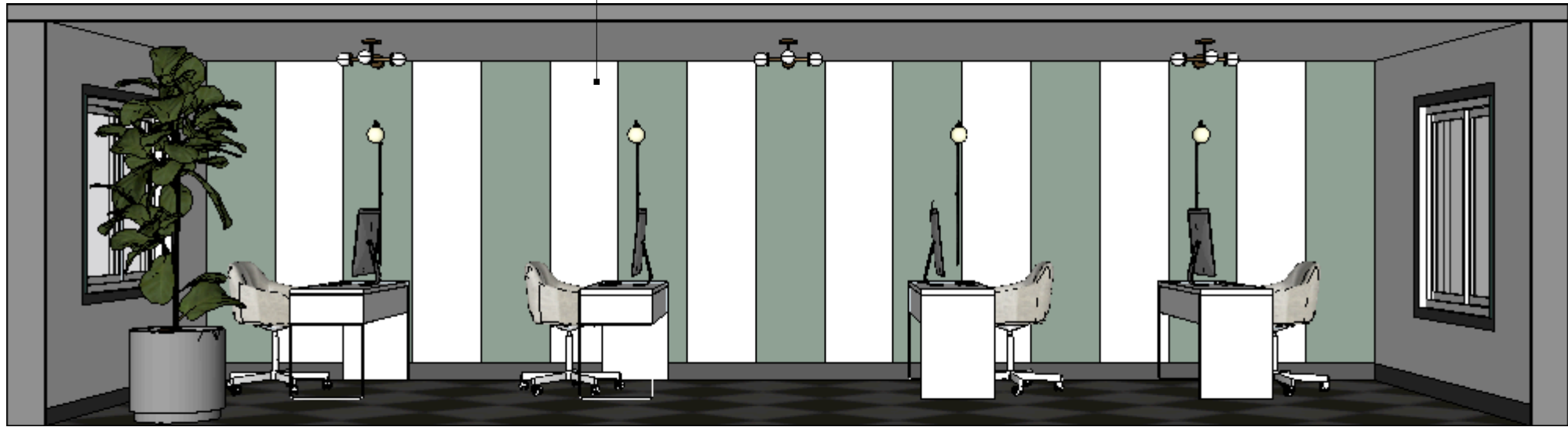
Contractor, builder, and all other trades must verify and confirm all dimensions and on site conditions independently before proceeding with any work. Failure to do so absolves IS+DS and its employees from any and all responsibility with work performed. Do not scale drawing. For discussion purposes only.



NOTE TO CONTRACTORS + TRADES

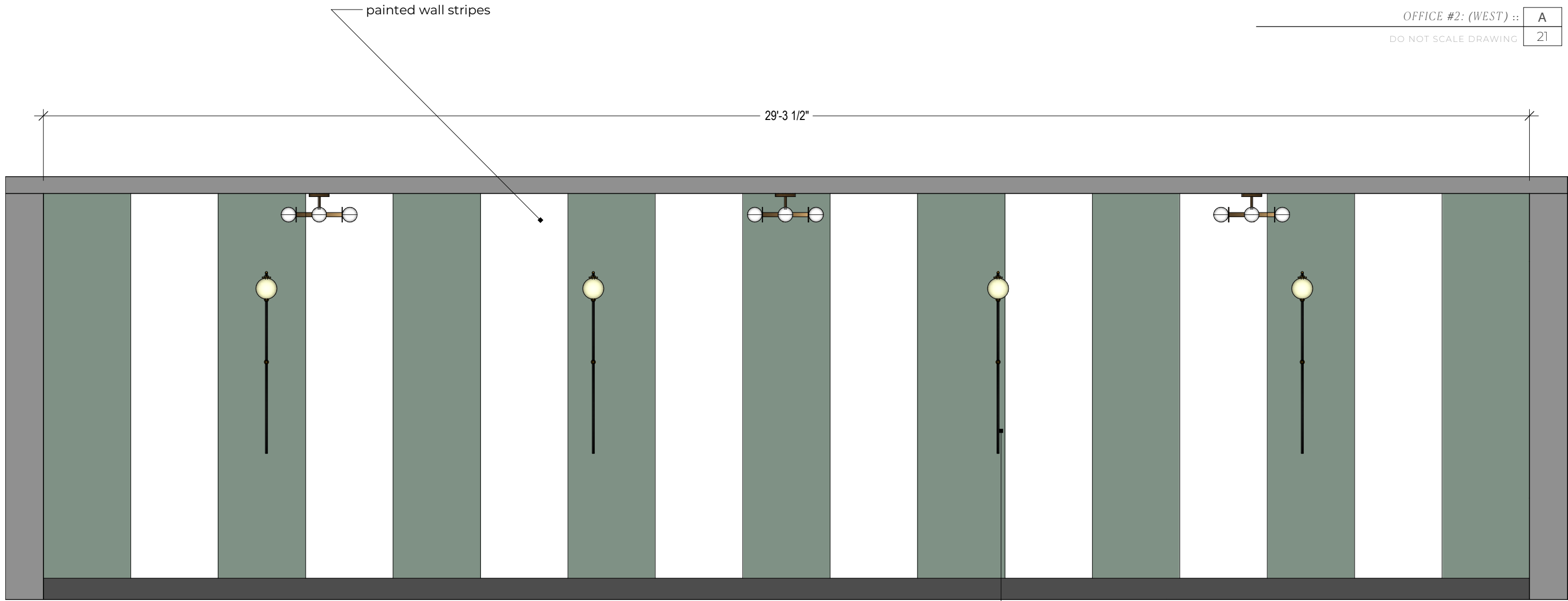
Contractor, builder, and all other trades must verify and confirm all dimensions and on site conditions independently before proceeding with any work. Failure to do so absolves IS+DS and its employees from any and all responsibility with work performed. Do not scale drawing. For discussion purposes only.

— painted wall stripes



NOTE TO CONTRACTORS + TRADES

Contractor, builder, and all other trades must verify and confirm all dimensions and on site conditions independently before proceeding with any work. Failure to do so absolves IS+DS and its employees from any and all responsibility with work performed. Do not scale drawing. For discussion purposes only.



Refer to paint schedule for color scheme

wall mount, plug in sconces





NOTE TO CONTRACTORS + TRADES

Contractor, builder, and all other trades must verify and confirm all dimensions and on site conditions independently before proceeding with any work. Failure to do so absolves IS+DS and its employees from any and all responsibility with work performed. Do not scale drawing. For discussion purposes only.