

SCISSORS  
& SCOTCH

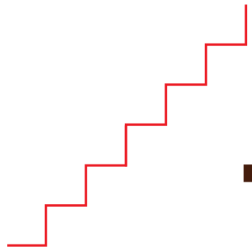


# SCISSORS & SCOTCH

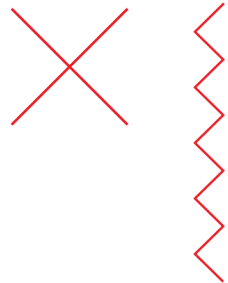
## SHOP DESIGN MANUAL 2024

V4.1 | 8/2024





# TABLE OF CONTENTS



## A - FINISHES

- Paint
- Concrete Floor
- Granite Countertops

## B - WALLCOVERINGS

- Feature Wall | SS Logo Sign
- Wainscoting
- Accent | Back Bar Wall Tile
- Bathroom Wall Tile
- Wall Base Trim

## C - SPECIALTY FINISHES

- Cloud Ceiling
- Back Bar Shelving

## D - MILLWORK

- Reception Desk
- Retail Display
- Barber Stations
- Bar Cabinets | Bar Shelving
- Shampoo Cabinets
- Prep Area Cabinets
- Break Room Cabinets
- Tall Storage Cabinets
- Lockers
- Front Bar Panels

## E - LIGHTING

- General Lighting

## F - ELEMENTS

- Barber Chairs | Mats
- Shampoo Shuttles
- Bar Equipment

## G - INTERIOR DOORS

- Glass Door | Sidelite
- Solid Core Doors

## H - Misc.

- A1 Bathroom Accessories H1
- A2 Bathroom Signage | Mirrors H2
- A3 Sinks | Faucets H3 - 5
- USB Outlets H6

## I - Signage

- B1 - 3
- B4 - 7
- B8
- B9
- B10
- Exterior Storefront Sign(s) I1

## CL - CHANGE LOG

- Change Log CL

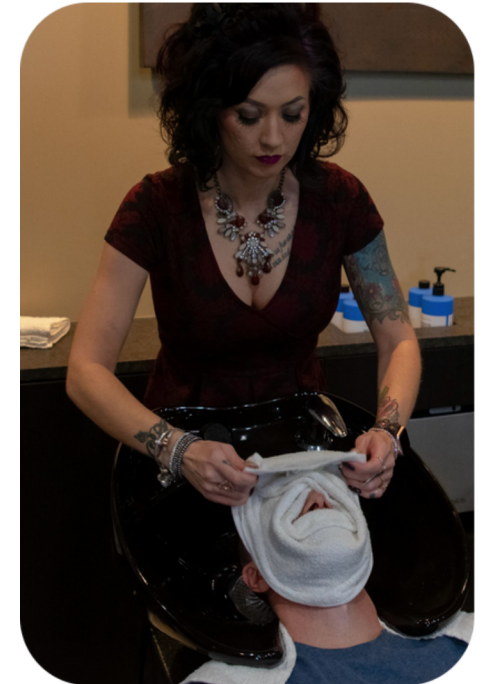
- C1
- C2 - 3

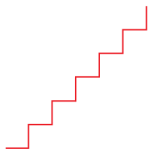
- D1
- D2
- D3
- D4
- D5
- D6
- D7
- D8
- D9
- D10

- E1 - 4

- F1
- F2
- F3

- G1 - 2
- G3





# A - Finishes | Paint



**PROVIDED BY:** GENERAL CONTRACTOR **INSTALLED BY:** GENERAL CONTRACTOR

**Manufacturer** Sherwin Williams

## Walls

First coat on raw drywall & raw drywall ceilings

🪴 ProMar 200 Zero VOC Interior Latex Primer, B28W02600

Second and third coats on Bar/Lounge walls, floor to ceiling & grooming walls, only above 10'

🪴 ProMar 200 Zero VOC Interior Latex **P1 (Black Fox) Eggshell Finish**

Second and third coats on Grooming walls up to 10' & above WC up to 10', breakroom, floor to ceiling

🪴 ProMar 200 Zero VOC Interior Latex **P2 (Prairie Grass) Eggshell Finish**

Second and third coats on Restroom Walls above tile

🪴 ProMar 200 Zero VOC Interior Latex **P3 (Iron Ore) Eggshell Finish**



## Ceilings

First coat on open ceilings

🪴 Primer/sealer appropriate for conditions and compatible with second/third coats

Second and third coats on All open ceilings

🪴 ProMar 200 Zero VOC Interior Latex **P1 (Black Fox) Flat Finish**

Second and third coats on Grooming drywall ceilings per plans (as applicable)

🪴 ProMar 200 Zero VOC Interior Latex **P2 (Prairie Grass) Flat Finish**

Second and third coats on Restroom drywall ceilings

🪴 ProMar 200 Zero VOC Interior Latex **GWB3 (Iron Ore) Flat Finish**



## Metal door frames | Exposed metal columns

First coat

🪴 Industrial Pro-Cryl Universal Primer, B66W310

Second and third coats

🪴 ProMar 200 Zero VOC Latex **P1 (Black Fox) Eggshell Finish**



*\*Refer to construction drawings finish schedule for confirmation*

# B - Wallcoverings | Concrete Floor

PROVIDED BY: GENERAL CONTRACTOR INSTALLED BY: GENERAL CONTRACTOR

Manufacturer Sherwin Williams



## Concrete floor throughout entire space

- ✘ GC to repair/patch any damage to existing concrete to obtain a smooth flat surface
- ✘ Structural relief cuts and/or expansion joints to be filled

## Finish | SC1

- ✘ Resutile transparent polyurethane semi-gloss sheen
- ✘ Grind to smooth flat surface and seal (no polishing)



APPROVED SC1 FINISH EXAMPLES



## INSUFFICIENT BLENDING AND COLOR CONSISTENCY



# A - Finishes | Granite Countertops

PROVIDED BY: GENERAL CONTRACTOR    INSTALLED BY: GENERAL CONTRACTOR



## Granite Countertops on bar tops, shampoo counter, restroom counters, Prep area sink counter & checkwriting ledge @ reception

### Finish | SS1

- ✘ Approved options based on availability/price →
- ✘ GC to confirm with Franchisee on pricing options before making selection
- ✘ All SS1 Surfaces to be 1-1/4" granite w/ brushed (or leathered) finish & smooth, 1/8 eased edge w/ polished corners only. No polished working or facing surfaces allowed



India Black Pearl



Absolute Black

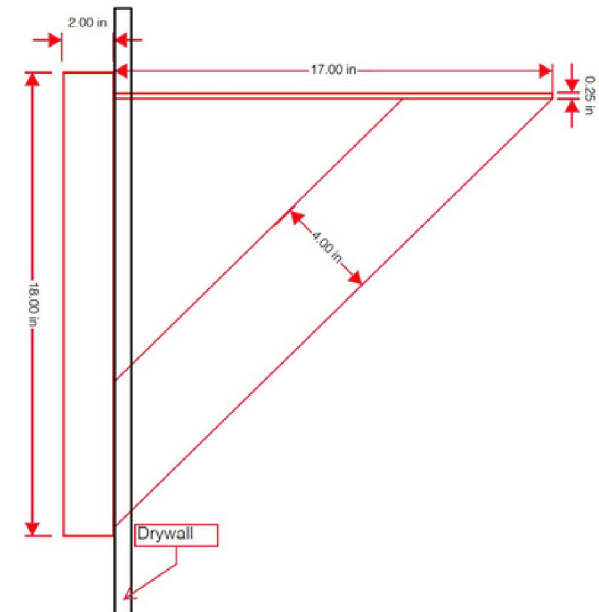
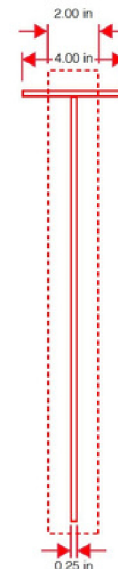
### Granite holes w polished corners

- ✘ All granite holes for cords cut directly in line with receptacles
- ✘ Field cut holes for faucets so faucet stream lands on center of drain
- ✘ Field cut single large tap tower/drain hole so tap connects directly to kegerator | EX: →



### Back bar countertop bracing

- ✘ Brace components to have welded connections
- ✘ Brace attached to wall framing to include sufficient blocking/attachment to wall framing as needed
- ✘ Refer to construction drawings for install location(s)
- ✘ GC to confirm install location to ensure bracing does not interfere with under bar equipment placement



# B - Wallcoverings | Feature Wall | Logo

PROVIDED BY: SSD INSTALLED BY: GENERAL CONTRACTOR



**Pre-Manufactured PLAM feature wall per construction drawings**

**Finish | WD1**

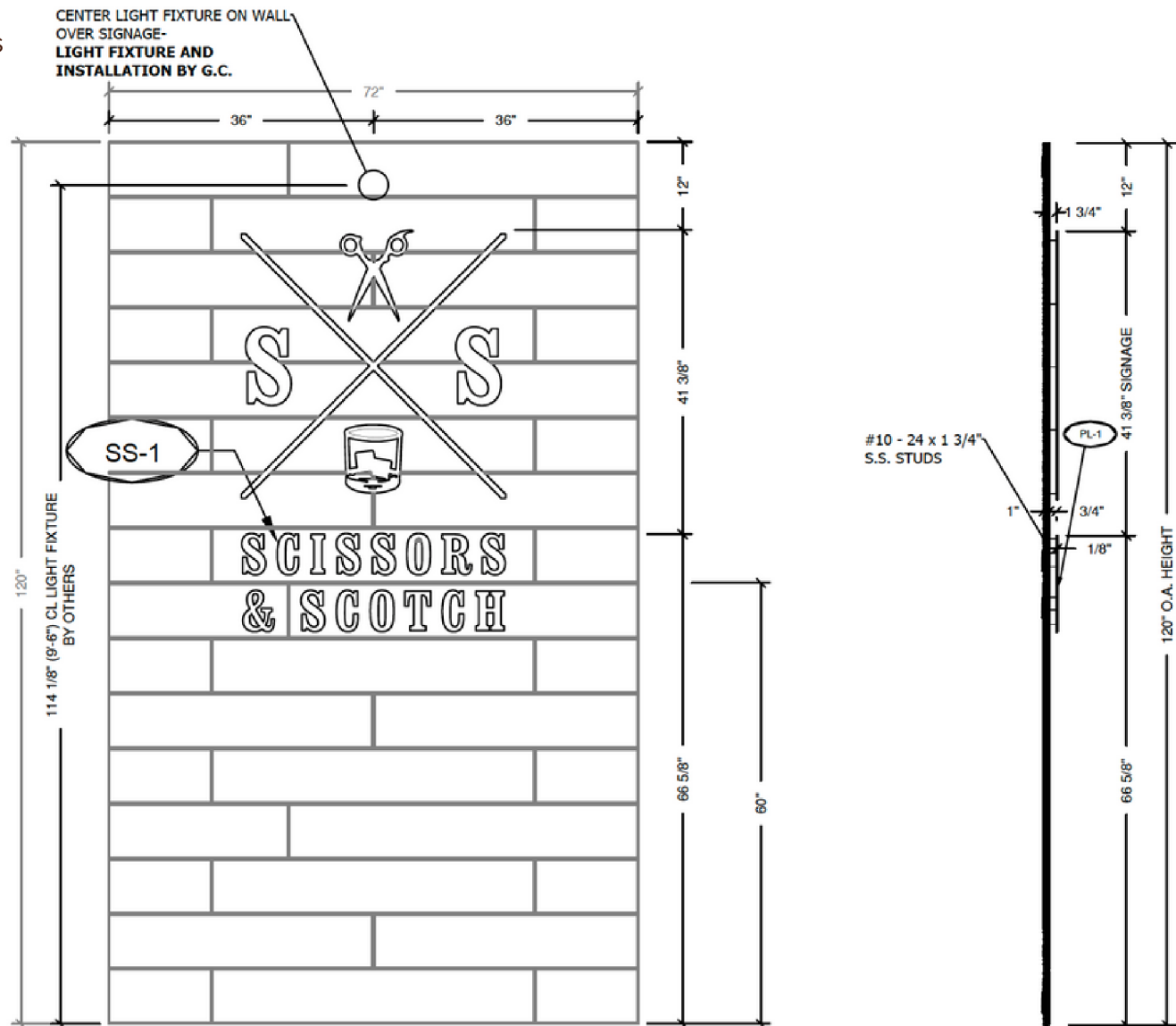
- ✂ PLAM pre-manufactured wall panels

**Feature Wall Panels**

- ✂ QTY. 2 panels - GC to mount panels per construction drawings and vendor shop drawings
- ✂ GC to install backing in wall as needed at "Z" clip attachment points per vendor shop drawings

**Stainless steel logo sign**

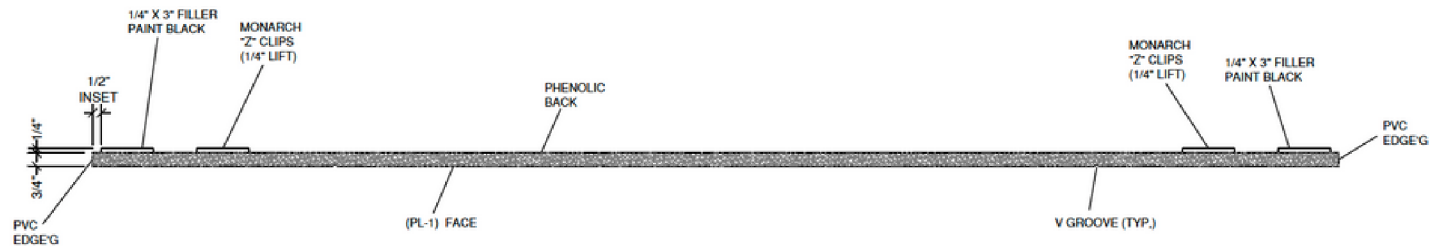
- ✂ Sign comes pre-installed on PLAM panels



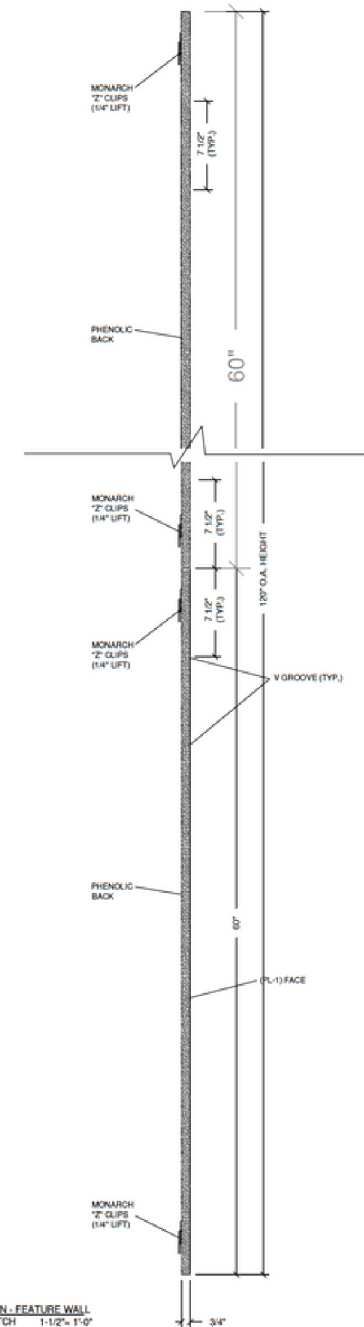
\*Drawings for reference only, refer to construction drawings and/or shop drawings per location

# B - Wallcoverings | Feature Wall | Logo

PROVIDED BY: SSD    INSTALLED BY: GENERAL CONTRACTOR



B RM #    HORZ SECTION - FEATURE WALL  
 ARCH. REF. -    SKETCH    1-1/2" = 1'-0"



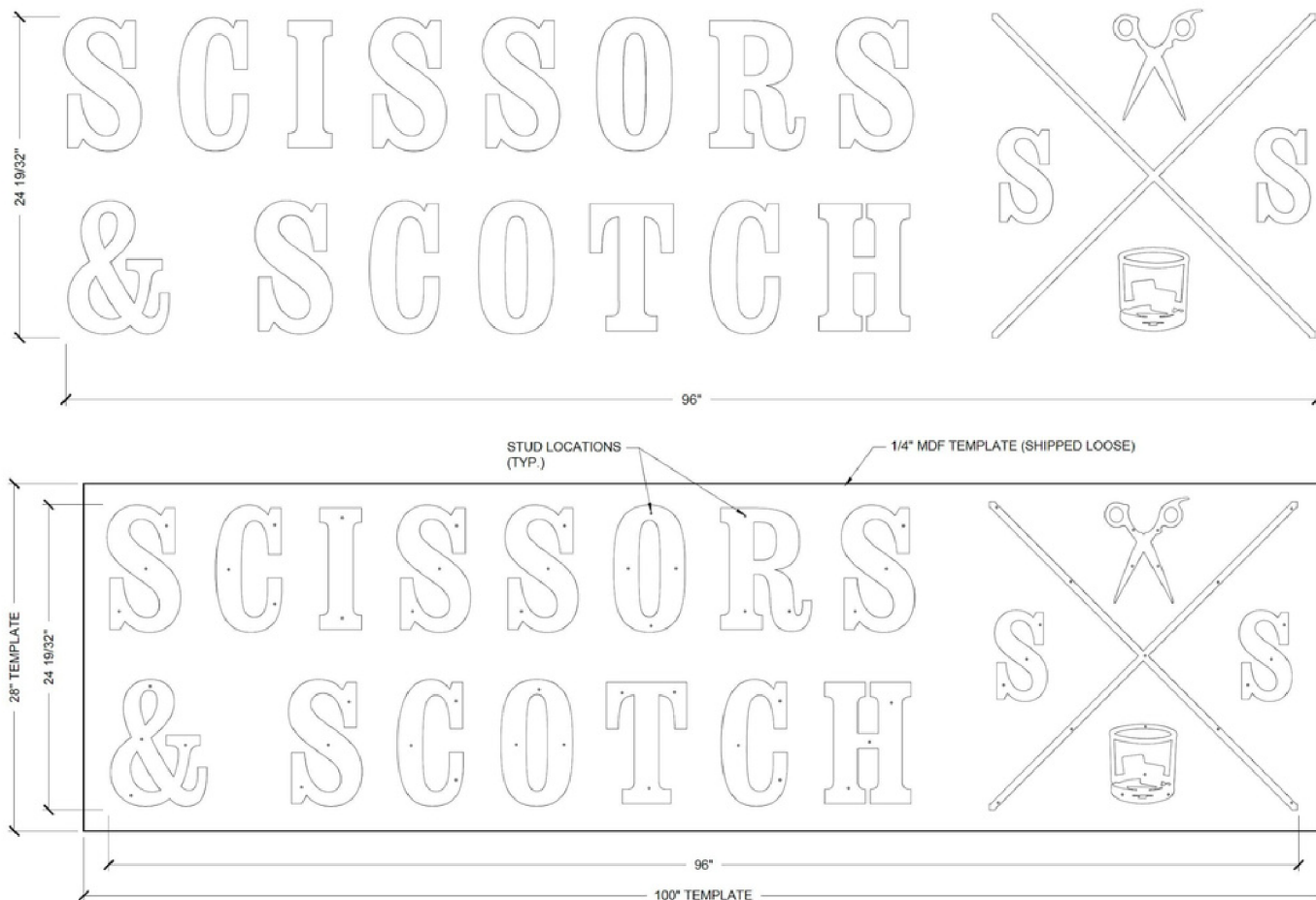
RM #    SECTION - FEATURE WALL  
 ARCH. REF. -    SKETCH    1-1/2" = 1'-0"

# B - Wallcoverings | Feature Wall | Logo

PROVIDED BY: SSD INSTALLED BY: GENERAL CONTRACTOR



Larger second design option shown below - not typically used. Refer to location specific shop drawings when feature wall larger than 6' (W) is shown per construction drawings



\*Drawings for reference only, refer to construction drawings and/or shop drawings per location



# B - Wallcoverings | Wainscoting



PROVIDED BY: GENERAL CONTRACTOR INSTALLED BY: GENERAL CONTRACTOR

## Wainscoting in grooming area only

- ✂ GC to provide & install WC and top rail per construction drawings specs on the following pages
- ✂ Prior to install, use laser level to determine for floor slope, max ½” gap at floor allowed. If gap is greater than ½” contact SSD
- ✂ Install & finish WC only after all painting has been completed

## Wood type

- ✂ Alder (to ensure stain match to vendor provided WC1 sample)

## Finish | WC1

- ✂ Requires sample approval via SSD
- ✂ Sand to 150 grit (critical)
- ✂ M.L. Campbell conditioner/sealer

### STEP 1

- ML Campbell wiping stain #WS2B10 | Clear base stain “conditioner”
- Wipe on, wipe off | Let dry 30 - 60 minutes

### STEP 2

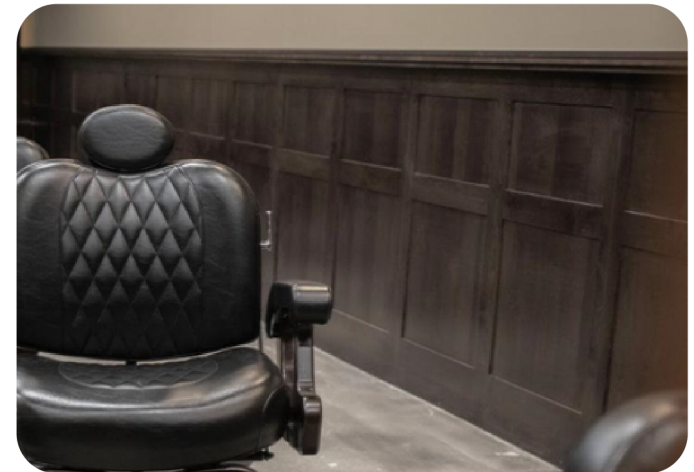
- ML Campbell wiping stain #WS2B10 | Tabacco (has a lot of die so stir consistently)
- Wipe on let penetrate for 2 min – 5 mins (use control sample if to light apply more stain to darken)
- Wipe off | Let dry for 30 min – 45 mins

### STEP 3

- ML Campbell Magna Sand (pre catalyzed sealer) #C115049
- Apply, let dry for 30 mins - 1 hr
- Sand with 3m fine sanding sponge 3/16” (must sand the same day as topcoat, do not leave overnight or will have to re sand for adhesion)

### STEP 4

- ML Campbell Water white High Performance pre catalyzed clear lacquer | satin sheen #MC122244
- First coat let dry for 30 mins - 1 hr. (second coat must be applied the same day as first coat or will required additional sanding)
- Second final coat let dry overnight (must be sprayed within 12 hrs. of the first coat or will have to re sand again for adhesion)

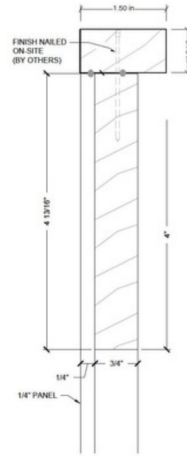
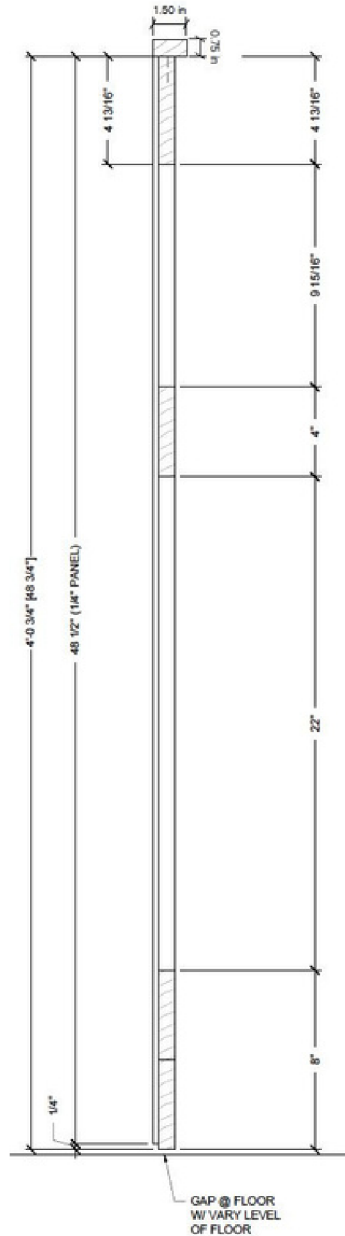


# B - Wallcoverings | Wainscoting

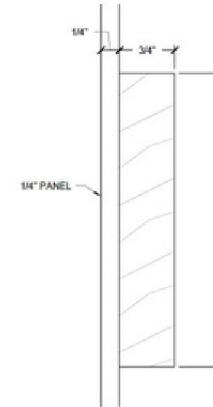


PROVIDED BY: GENERAL CONTRACTOR    INSTALLED BY: GENERAL CONTRACTOR

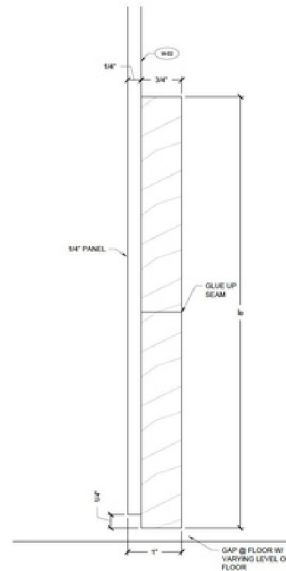
\*For design reference - have contractor adhere to provided dimensions



WAINSCOT - TOP RAIL DETAIL



WAINSCOT - MID-RAIL DETAIL



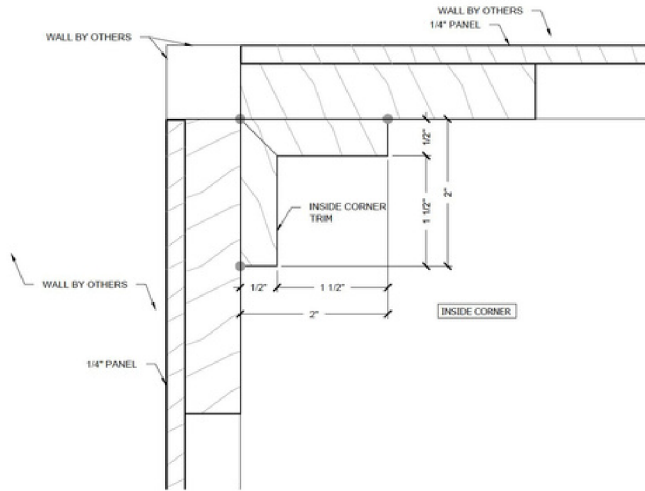
WAINSCOT - BOTTOM RAIL DETAIL

# B - Wallcoverings | Wainscoting

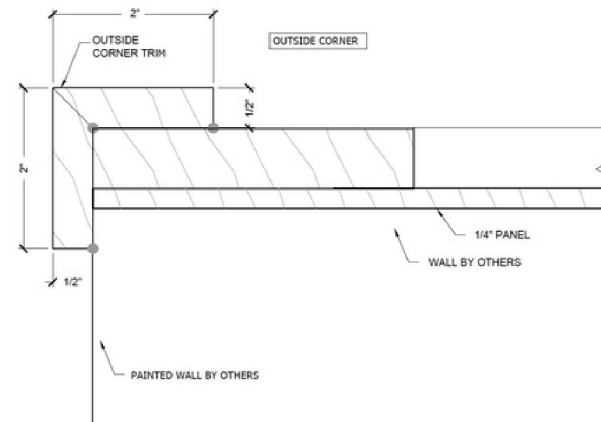


PROVIDED BY: GENERAL CONTRACTOR    INSTALLED BY: GENERAL CONTRACTOR

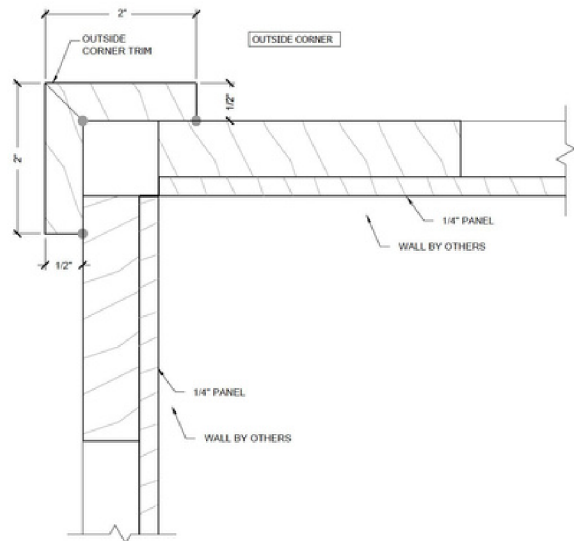
\*For design reference - have contractor adhere to provided dimensions



WAINSCOT - INSIDE CORNER DETAIL



WAINSCOT - STRAIGHT RUN END DETAIL



WAINSCOT - OUTSIDE CORNER DETAIL

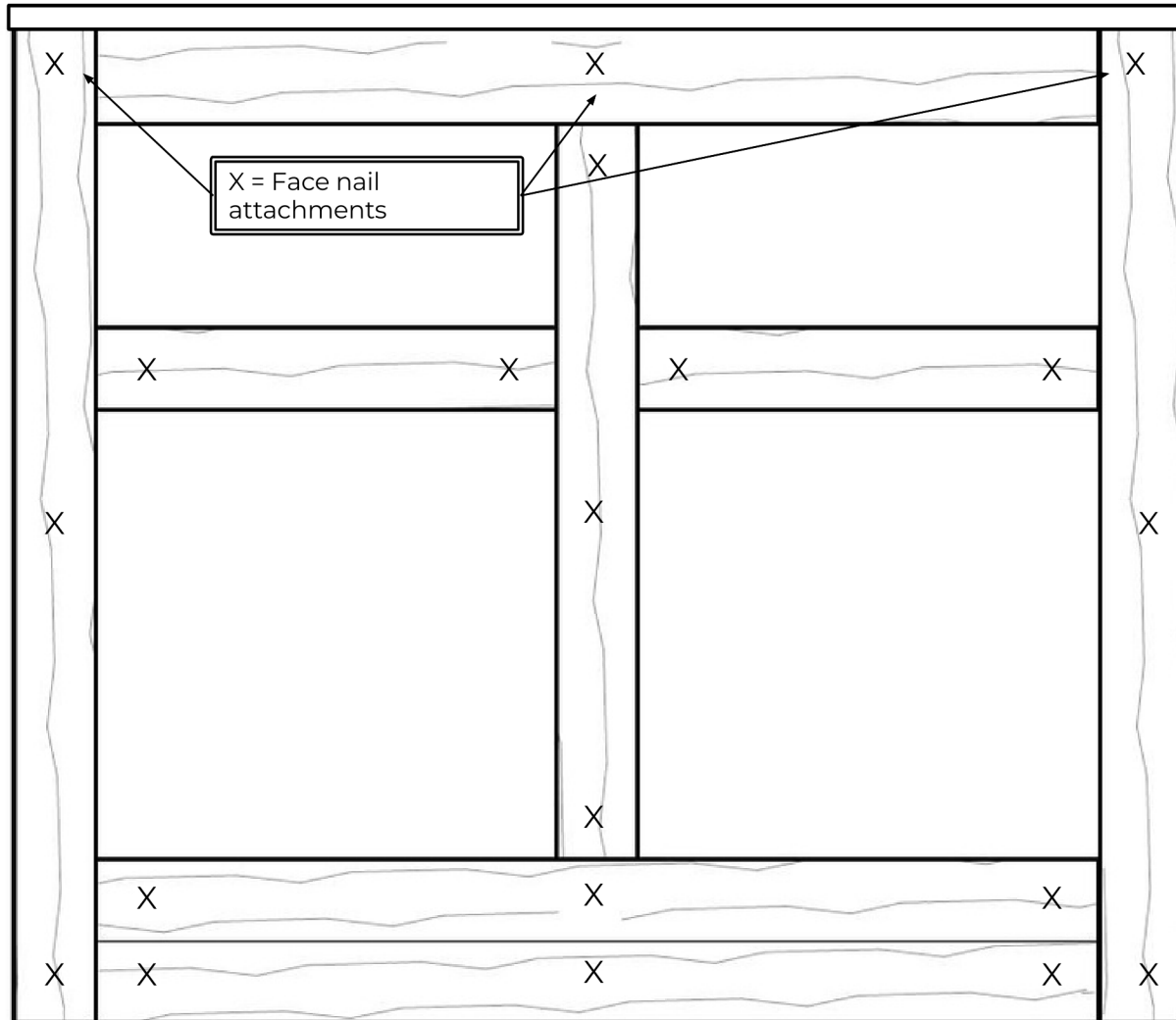


# B - Wallcoverings | Wainscoting



**PROVIDED BY:** GENERAL CONTRACTOR **INSTALLED BY:** GENERAL CONTRACTOR

X = visible face nail locations for attachment  
Hide panel attachment nails under face trim  
Installer to fill all visible nail holes at face trim and touch up with stain to match



# B - Wallcoverings | Accent/Bar Wall Tile



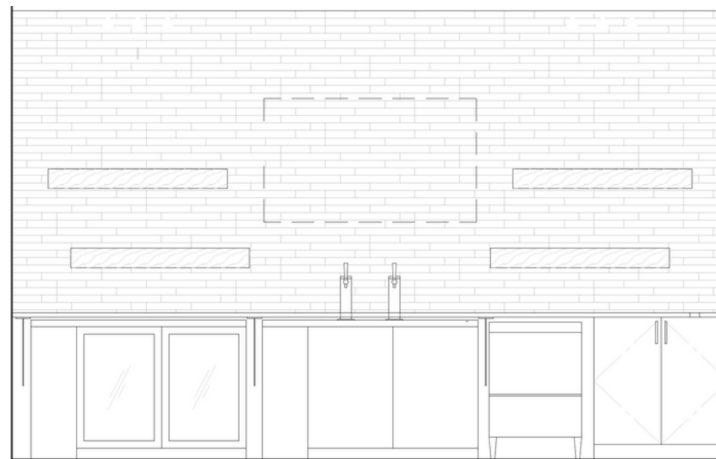
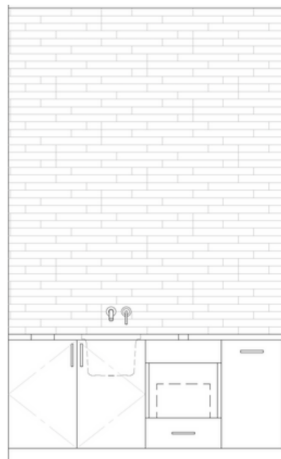
**PROVIDED BY:** GENERAL CONTRACTOR **INSTALLED BY:** GENERAL CONTRACTOR

## Wall tile at Prep Area Back Wall & Back Bar Wall

- ✂ Horizontally dry stacked w/ offset pattern - grout remaining visible lines with similar color grout.
- ✂ Where applicable, finish edge(s) of tile with brushed satin aluminum schluter strips
- ✂ GC can source locally and determine appropriate lead time. KC vendor available if local vendors cannot source - CST Tile 913.645.8380 [Shelley@csttile.com](mailto:Shelley@csttile.com) and [kami@csttile.com](mailto:kami@csttile.com)

## Finish | T1

- ✂ Manufacturer | Rondine
- ✂ Name | Quartz White 3D porcelain tile



# B - Wallcoverings | Bathroom Wall Tile

PROVIDED BY: GENERAL CONTRACTOR INSTALLED BY: GENERAL CONTRACTOR

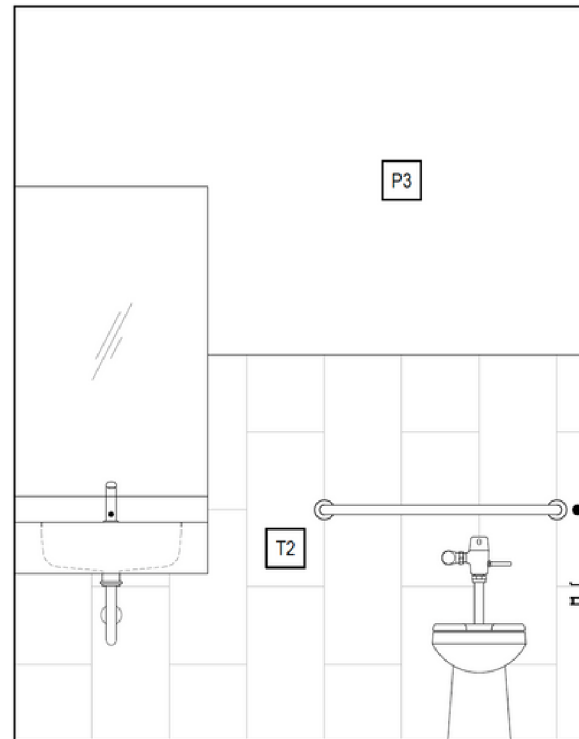


## Wall tile in restrooms

- ✂ Vertically stacked with ½ offset pattern to 5' AFF - refer to construction drawings
- ✂ Black grout sourced by GC
- ✂ Finish top horizontal edge with black schluter
- ✂ GC can source locally and determine appropriate lead time (KC vendor available if local vendors cannot source)  
- CST Tile 913.645.8380 [Shelley@csttile.com](mailto:Shelley@csttile.com) and [kami@csttile.com](mailto:kami@csttile.com)

## Finish | T2

- ✂ Manufacturer | Imola
- ✂ Name | Koshi 36N



# B - Wallcoverings | Wall Base Trim

PROVIDED BY: GENERAL CONTRACTOR | INSTALLED BY: GENERAL CONTRACTOR

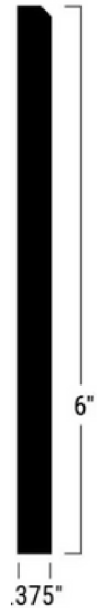


## Base Trim in Lounge, Entry & Grooming

- ✘ May have up to 6 week lead time, schedule order placement accordingly
- ✘ Install only on walls with drywall base (not for use on walls with wainscoting or on wood planked feature wall)
- ✘ Miter & glue corners - install per manufacturer instructions
- ✘ Install per manufacturer's instructions including, not limited to: All walls must be free of dust, oil, compounds or other foreign material. Trim cannot be installed over vinyl wallcoverings. It is best to install on a primed wall. If the wall is painted, scuff up the wall and remove any dust prior to installation. Apply the adhesive to both the back of the trim material and the wall. (Tarkett 946 Premium Contact Adhesive)

## Finish | RB1

- ✘ Spec | Johnsonite Millwork Wall Base Finishing System - Mandalay 6"
- ✘ Manufacturer | [commercial.tarkett.com](http://commercial.tarkett.com) , 800-899-8916 or local supplier
- ✘ Color | Black
- ✘ Size | 6" x .375"

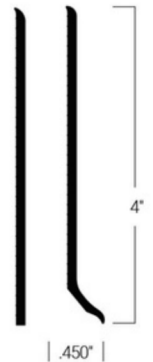


## Base Trim in Breakroom & Bar

- ✘ Install only on walls with drywall base (not for use on walls with wainscoting or on wood planked feature wall)
- ✘ Miter & glue corners - install per manufacturer instructions (refer to details above)
- ✘ Install in breakroom and under front/back bar if needed

## Finish | RB2

- ✘ Manufacturer | [commercial.tarkett.com](http://commercial.tarkett.com) , 800-899-8916 or local supplier (alternate manufacturers approved if black in color)
- ✘ Spec | Traditional 1/8" Rubber Wall Base
- ✘ Color | Black
- ✘ Size | 4" x .450"



# C - Specialty Finishes | Cloud Ceiling

PROVIDED BY: SSD INSTALLED BY: GENERAL CONTRACTOR

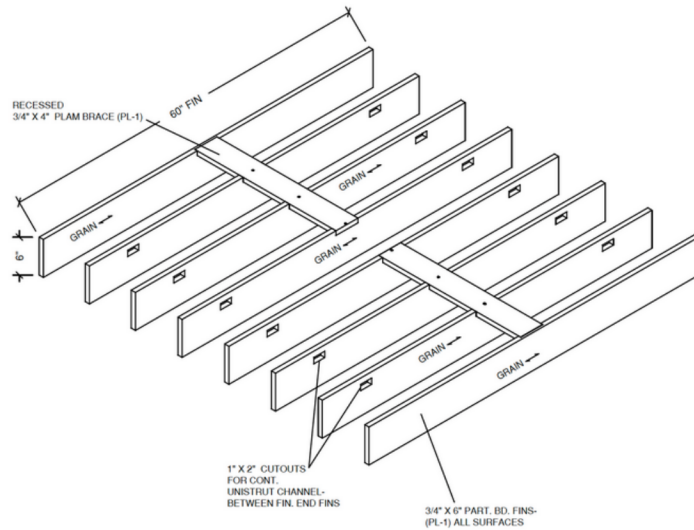


## Cloud ceilings in grooming over barber chairs

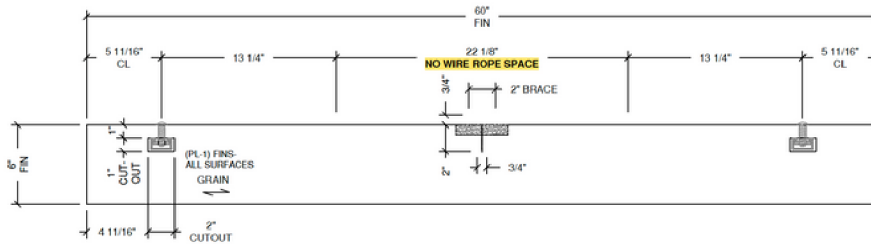
- ✂ GC to provide structure at ceiling and all hanging attachment hardware from cloud unistrut to ceiling
- ✂ GC to install qty of clouds per construction drawings using hanging hardware rated above ~88 lb. individual cloud weight
- ✂ Ceiling comes pre-assembled
- ✂ GC to coordinate lighting hung through center of each panel per const. drawings. Center lights to be flush with bottom of panels

## Finish | TBD

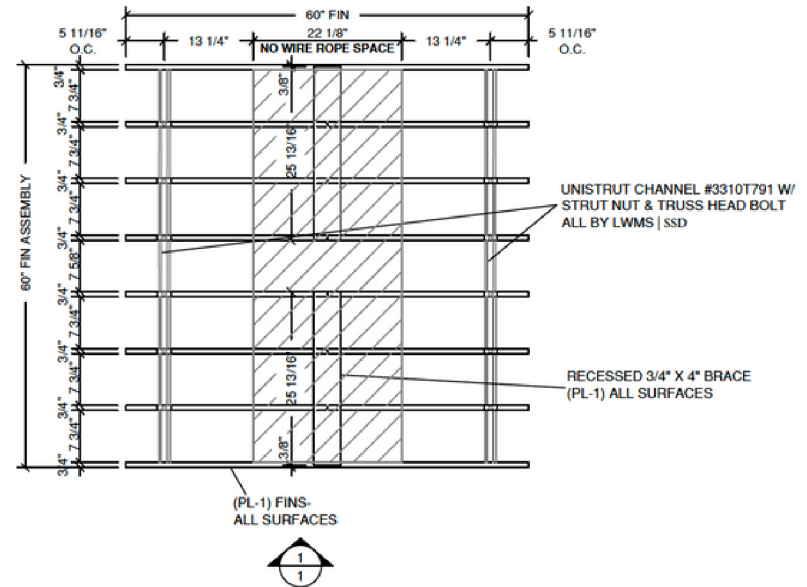
✂ PLAM



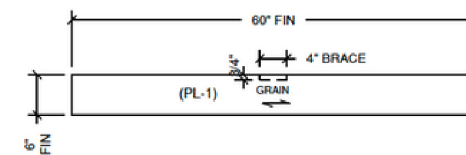
RM # ISOMETRIC- CLOUD CEILING (UNISTRUT NOT SHOWN FOR CLARITY)  
ARCH. REF. - SKETCH N.T.S.



RM # SECTION - CLOUD CEILING  
ARCH. REF. - SKETCH 1-1/2"= 1'-0"



RM # PLAN VIEW- CLOUD CEILING  
ARCH. REF. - SKETCH 1/2"= 1'-0"



RM # END ELEVATION- CLOUD CEILING  
ARCH. REF. - SKETCH 1/2"= 1'-0"



# D - Specialty Finishes | Bar Shelving



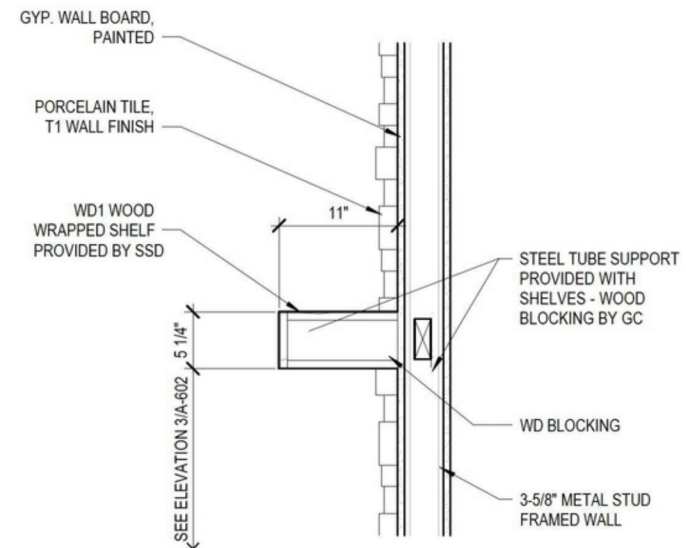
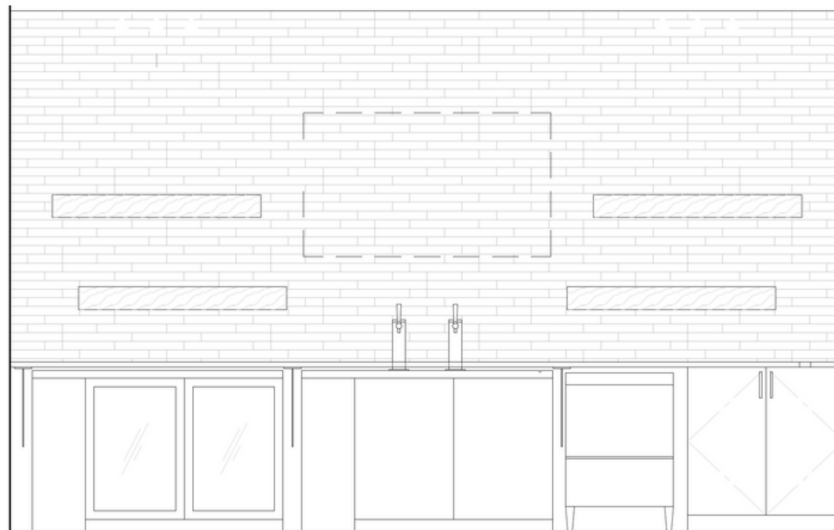
PROVIDED BY: SSD INSTALLED BY: GENERAL CONTRACTOR

## ☑ Floating Wood Clad Bar Shelving at Back Bar Wall

- ✗ Bottom of lowest bar shelves 12" from surface of back bar countertop
- ✗ Bottom of top shelves 16" from top of bottom shelf
- ✗ Stagger bottom shelves inset 6" from top shelves
- ✗ GC to provide wood 4x4 blocking in walls per shelf location
- ✗ Shelves to mount to surface of drywall (not directly on tile face - finish tile to surround shelves)
- ✗ Steel mounting bracket and anchoring hardware provided with shelving

## ☑ Finish | WD1

- ✗ Jasper National Hickory Appaloosa engineered flooring planks
- ✗ Size | 5' x 11" x 5-1/4" or 4' x 11" x 5-1/4" (Refer to architectural drawings to confirm size)
- ✗ Qty | x4 per location

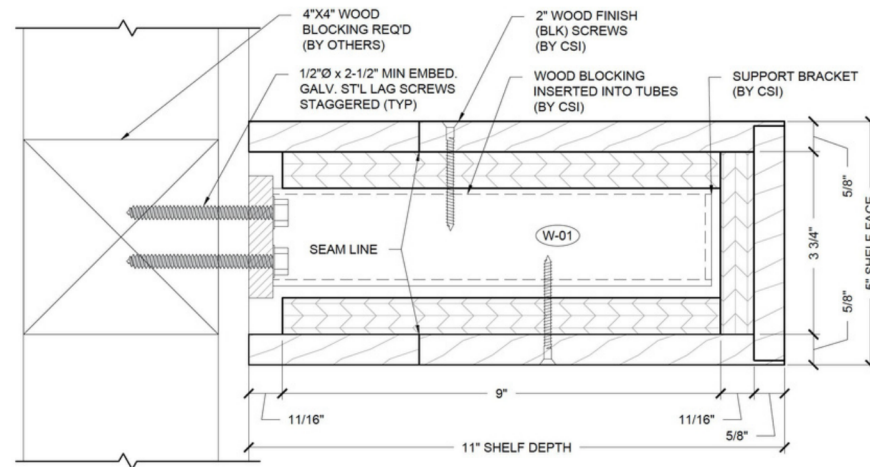
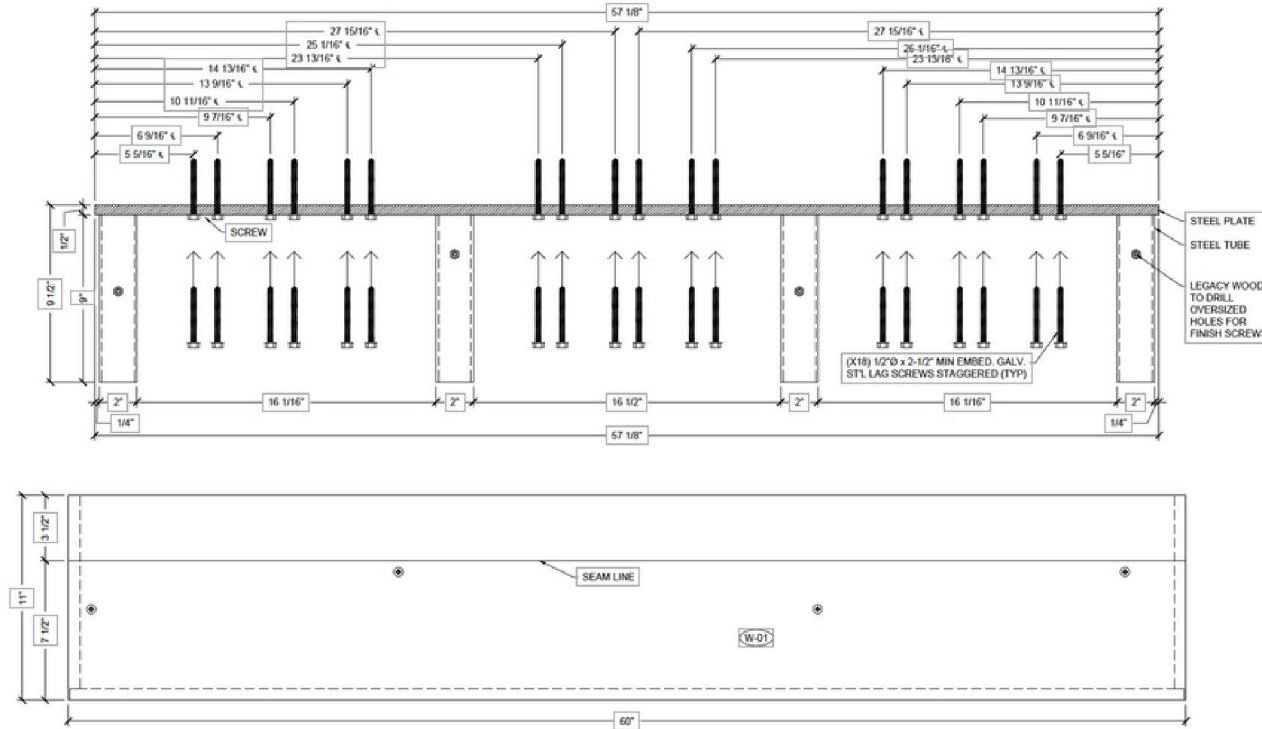


# C - Specialty Finishes | Bar Shelving

PROVIDED BY: SSD INSTALLED BY: GENERAL CONTRACTOR



Shelving bracket detail



# D - Millwork | Reception Desk



**PROVIDED BY:** SSD **INSTALLED BY:** GENERAL CONTRACTOR

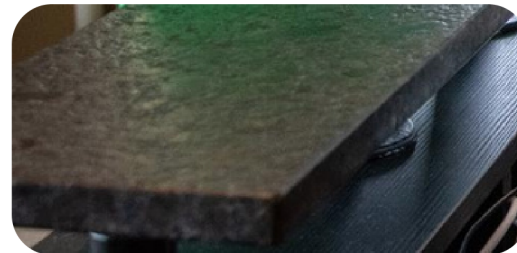
## Reception desk in lounge near front bar

- ✂ Refer to construction drawings for size and placement (coordinate underground electrical @ center of footprint)
- ✂ GC to receive, unload & install
- ✂ Reception desk size varies. Typical 6' x 2' will be preferred but, design may require 4' x 2' - refer to const. drawings.

**PROVIDED BY:** GENERAL CONTRACTOR **INSTALLED BY:** GENERAL CONTRACTOR

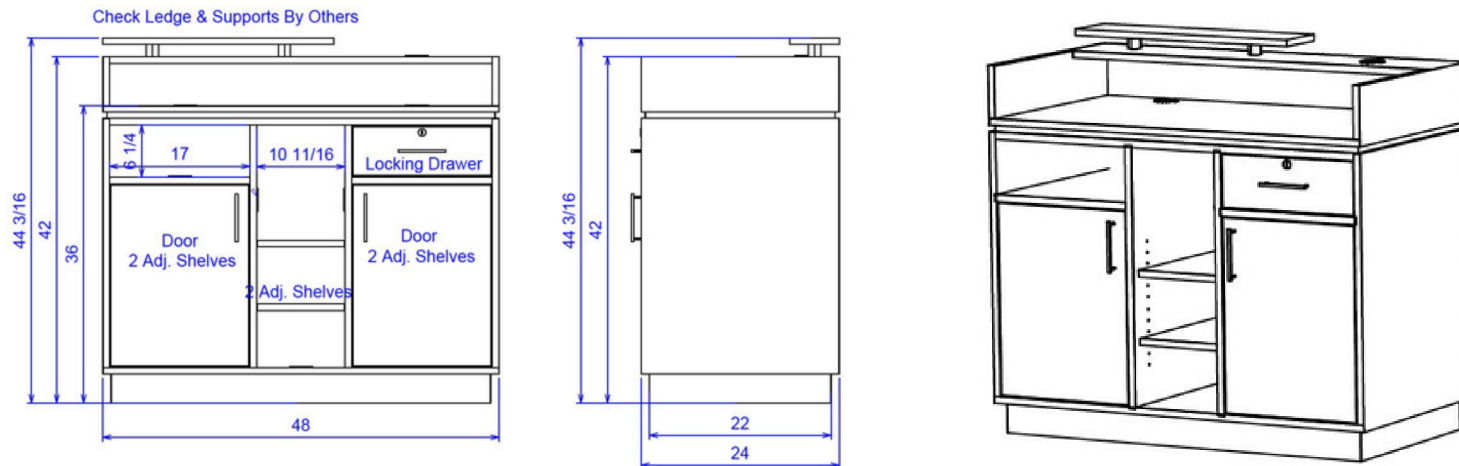
## Check ledge & supports

- ✂ Check ledge
  - Size | 28" x 8" x 1.25"
- ✂ Supports
  - 1" dia. x 2-1/2" galvanized steel nipple (x3)
  - 1" Floor flanges (x6)



## Finish | SS1

- ✂ Made from approved granite selection | same as countertops
- ✂ Prep and finish pipe with flat black direct to metal paint (clean raw pipe with water-based degreaser to remove oils. Sand prior to applying finish to ensure adhesion)



# D - Millwork | Retail Display

PROVIDED BY: SSD INSTALLED BY: GENERAL CONTRACTOR



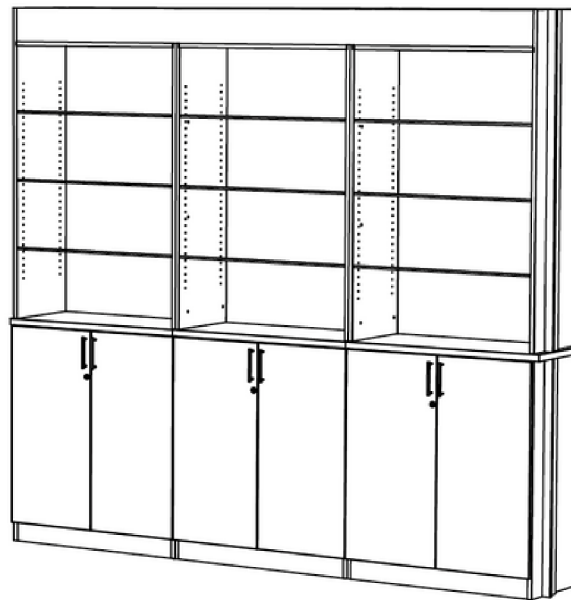
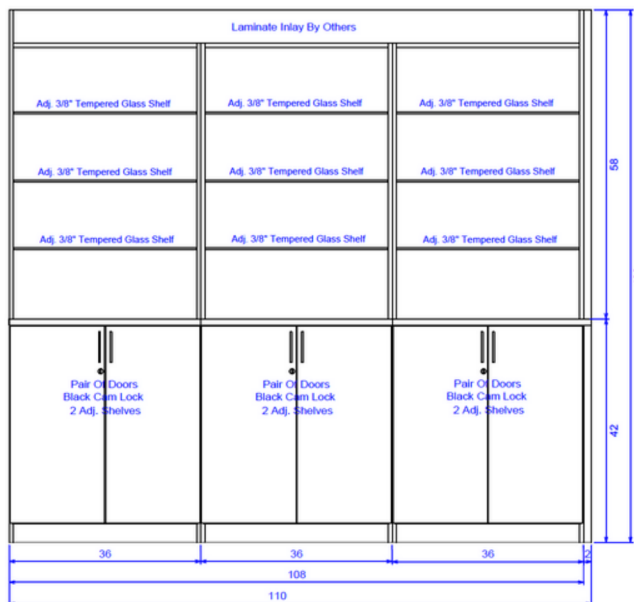
## Retail display

- ✂ GC to receive, unload & install
- ✂ GC to provide blocking in lieu of drywall behind millwork only to allow secure anchoring.  
No blocking visible upon installation
- ✂ Space bottom shelves with 12-3/4" vertical spacing from top of cabinets and remaining shelves at 12-3/4" spacing
- ✂ Size | 7.5' - 9' length per location

## Wood flooring plank trim @ top of retail units

- ✂ GC to install laminate wood trim at top of retail display with provided laminate by SSD
  - Fit planks in notched recess at top horizontal of retail display
  - Center plank seam and trim outside ends if needed
  - No visible screw heads use 18-23 gauge pin nails and minimize visible anchors

## Finish | WD1



\*For reference only, refer to construction drawings and/or shop drawings per location

# D - Millwork | Barber Stations

PROVIDED BY: SSD INSTALLED BY: GENERAL CONTRACTOR

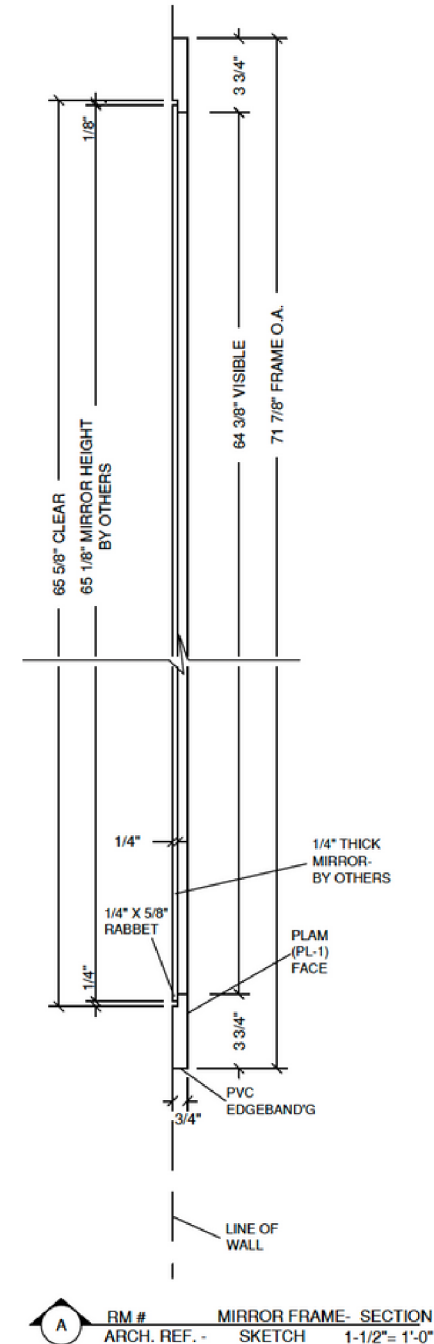
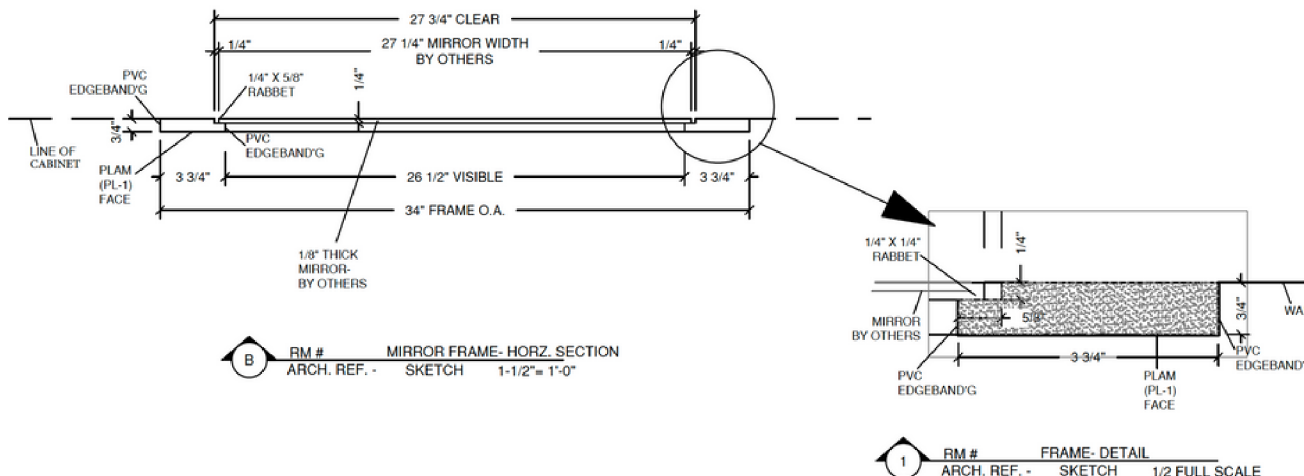


## Barber stations

- ✗ GC to receive, unload & install
- ✗ GC to anchor barber stations per manufacturer recommendation below:
  - Anchor to the floor using 2x4 pine blocking. Attach 2 pieces of blocking to the floor with Tapcons or sleeve anchors then screw through the face of the toe kick into the blocking to anchor
- ✗ Qty | 4-6 stations per location, confirm qty and orientation per construction drawings

## Barber station mirrors & wood plank trim

- ✗ GC to receive, unload & install provided mirrors
  - Install mirror with hold to dimensions of:
    - Top of mirror 3-3/8" from base of top crown trim
    - Sides of mirror - maintain 3-3/8" of space on each vertical end
  - Mirrors affix using mirror mastic
- ✗ GC to frame mirrors with provided pre-assembled PLAM mirror frames (x2 per station)
  - Mirror frame is 1/4" shorter in overall length than space avail. for install
    - Install mirror frame flush with width of barber station
    - Install top of mirror frame flush with base of top crown trim of barber station
  - Securely affix with construction adhesive (no visible screw heads). If needed, in addition to adhesive, use minimal amount of 18-23 gauge pin nails at corners only



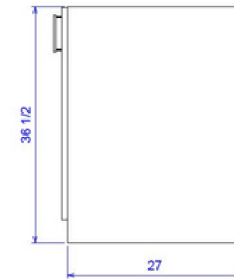
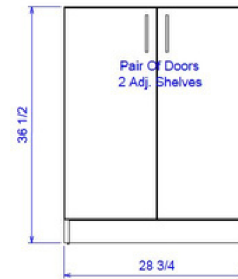
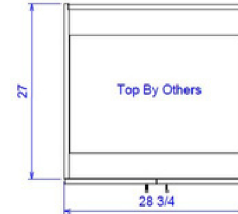
# D - Millwork | Bar Cabinets & Shelving

PROVIDED BY: SSD INSTALLED BY: GENERAL CONTRACTOR



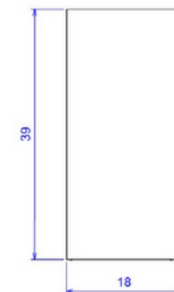
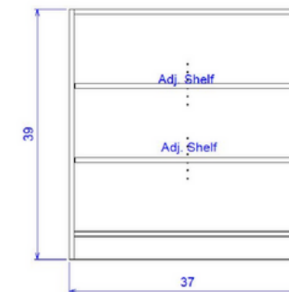
## Back bar cabinets

- ✂ GC to receive, unload & install
- ✂ If shown in drawings, these will act as back bar counter top support back bar granite countertop (Additional support is required, GC to refer to drawings and A3 for countertop brackets)
- ✂ Qty | (x2) per location
- ✂ Size | Refer to construction drawings



## Front bar shelving

- ✂ Free standing, not load bearing
- ✂ GC to receive, unload & install
- ✂ Qty | (x1) per location
- ✂ Size | Refer to construction drawings



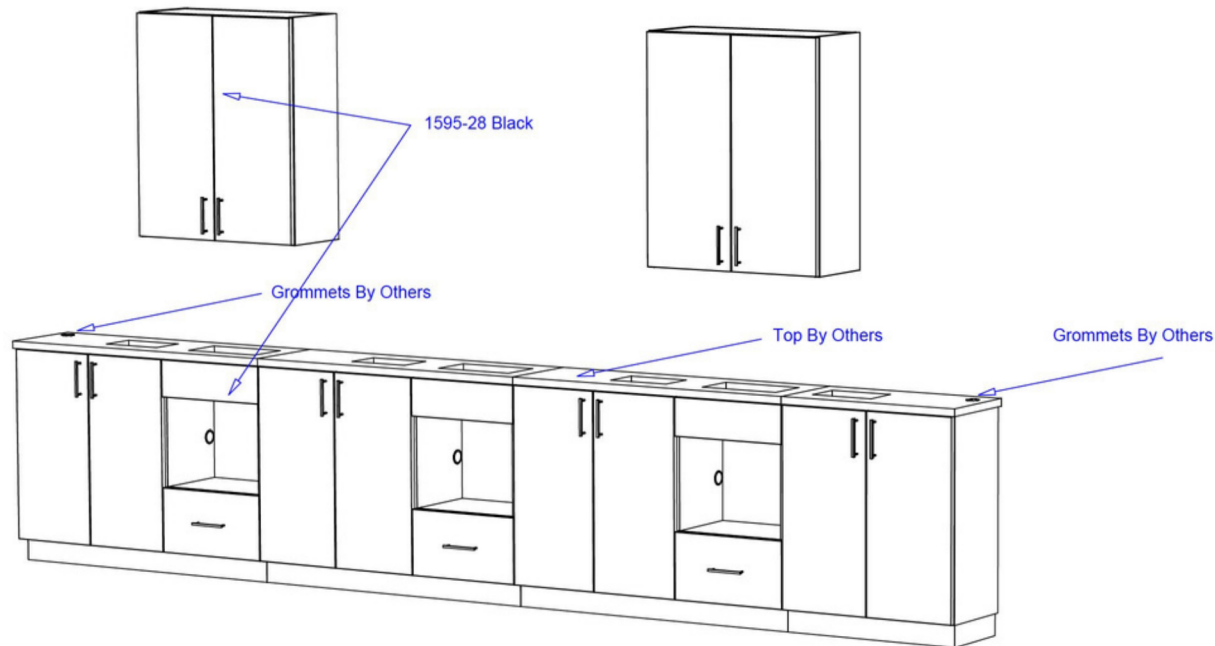
# D - Millwork | Shampoo Cabinets

PROVIDED BY: SSD INSTALLED BY: GENERAL CONTRACTOR



## Shampoo cabinets

- ✂ GC to receive, unload & install
- ✂ GC to install granite countertop SS1 per construction drawings and cut holes, grommets per drawings
  - Bottle Well - 7" x 12"
  - Towel Drop - 6" x 8"
  - 2" Wire grommets
- ✂ GC to provide blocking behind millwork to allow secure anchoring, no blocking visible upon installation
- ✂ Qty 1 (x1) cabinetry & (x2) upper cabinets



\*Drawings for reference only, refer to construction drawings and/or shop drawings per location

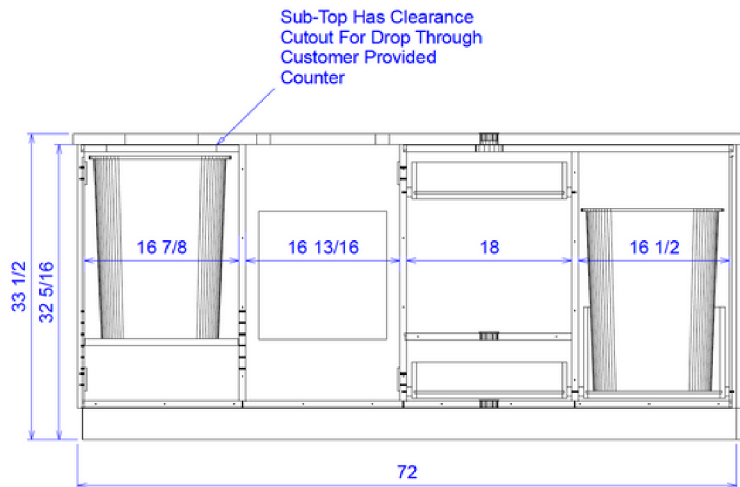
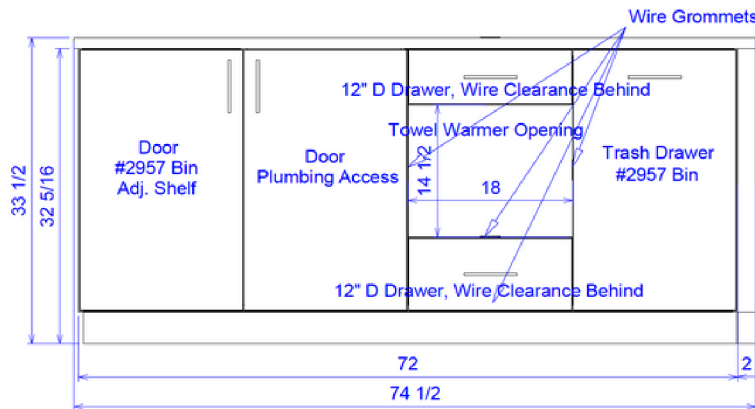
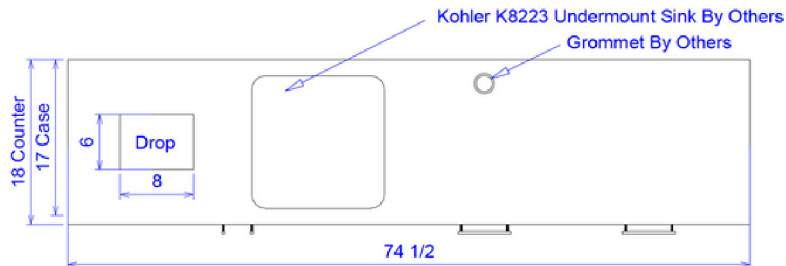
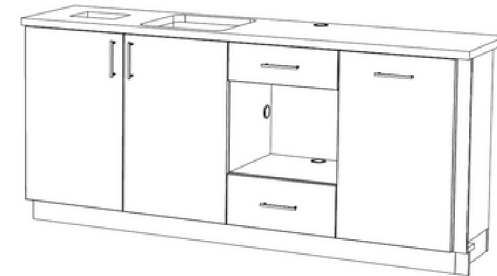
# D - Millwork | Prep Area Cab Cabinets

PROVIDED BY: SSD INSTALLED BY: GENERAL CONTRACTOR



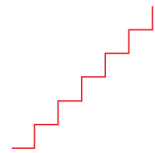
## Prep area cabinets

- ✂ GC to receive, unload & install
- ✂ GC to install granite countertop SS1 per construction drawings and cut holes, grommets per drawings
  - Towel Drop - 6" x 8"
  - 2" Wire grommets
  - Hole for under-mount sink
- ✂ GC to provide blocking behind millwork to allow secure anchoring, no blocking visible upon installation



\*Drawings for reference only, refer to construction drawings and/or shop drawings per location





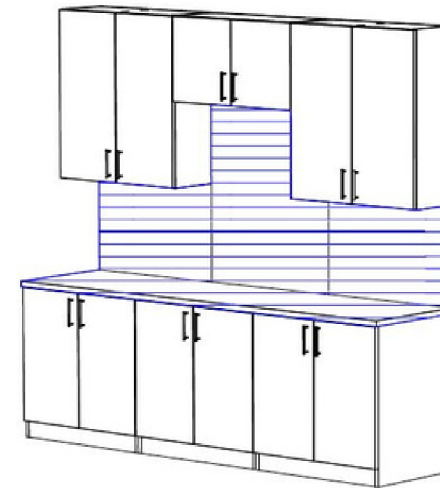
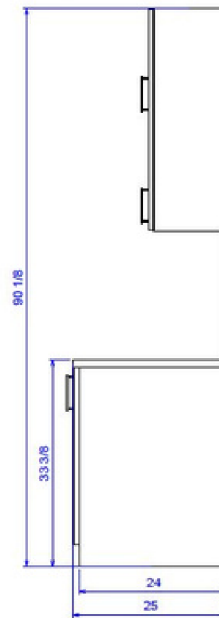
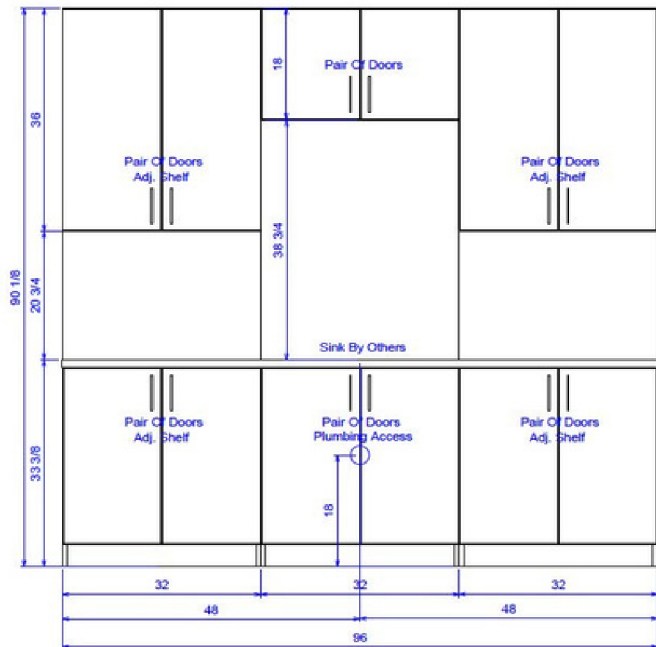
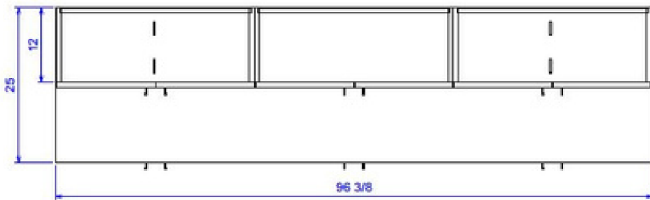
# D - Millwork | Break Room Cabinets



PROVIDED BY: SSD INSTALLED BY: GENERAL CONTRACTOR

## Break room cabinets

- ✕ GC to receive, unload & install
- ✕ GC to install cutout for sink, install sink and disposal
- ✕ Laminate countertop included from vendor
- ✕ Qty 1 (x1) per location
- ✕ GC to provide blocking behind millwork to allow secure anchoring, no blocking visible upon installation



\*Drawings for reference only, refer to construction drawings and/or shop drawings per location

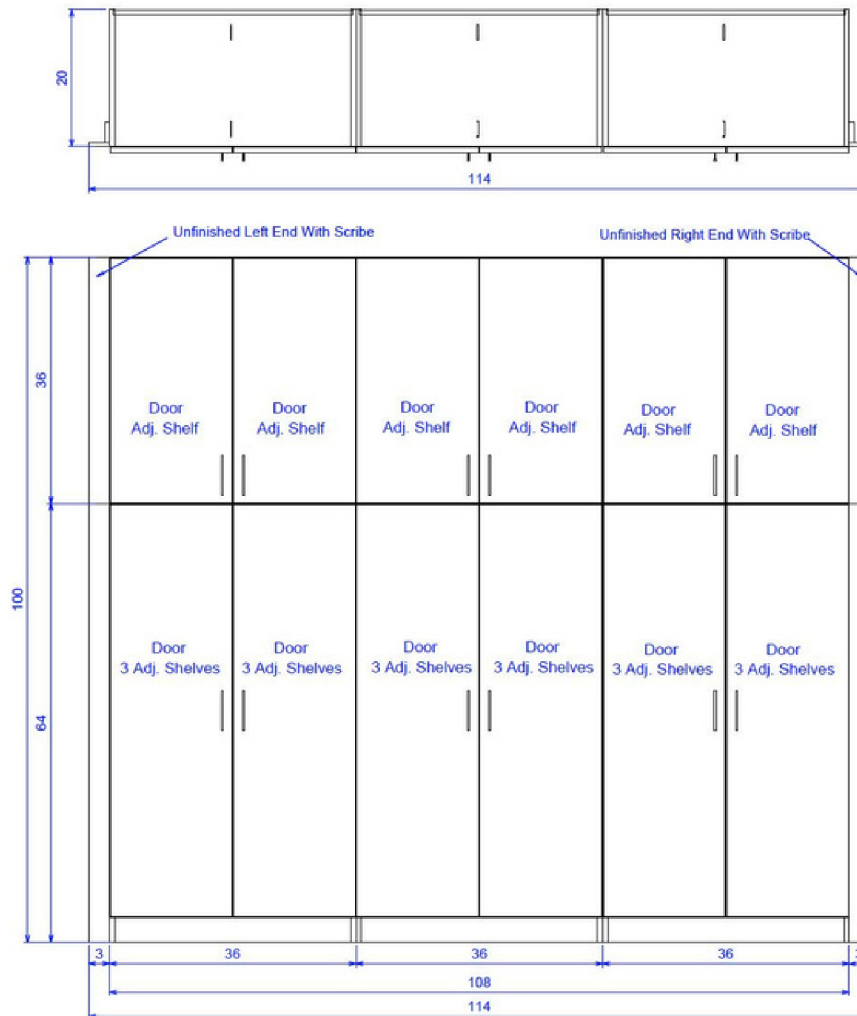
# D - Millwork | Tall Storage Cabinets

PROVIDED BY: SSD INSTALLED BY: GENERAL CONTRACTOR

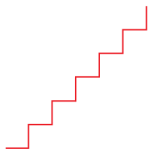


## Tall storage cabinets

- ✂ GC to receive, unload & install
- ✂ Qty | 9' - 12' length per location
- ✂ GC to provide blocking behind millwork to allow secure anchoring, no blocking visible upon installation



\*Drawings for reference only, refer to construction drawings and/or shop drawings per location



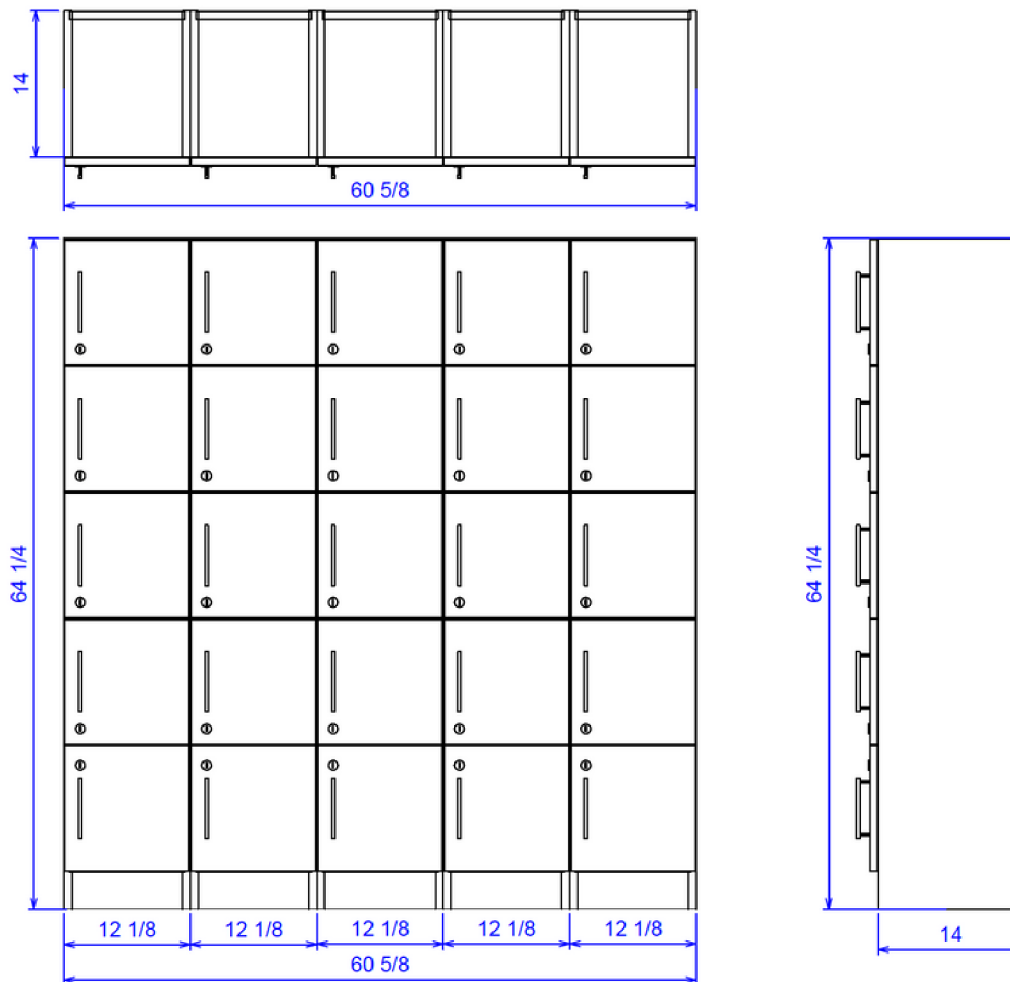
# D - Millwork | Lockers

PROVIDED BY: SSD    INSTALLED BY: GENERAL CONTRACTOR



## Lockers

- ✂ GC to receive, unload & install
- ✂ Qty 1 (x1) per location
- ✂ GC to provide blocking behind millwork to allow secure anchoring, no blocking visible upon installation



\*Drawings for reference only, refer to construction drawings and/or shop drawings per location



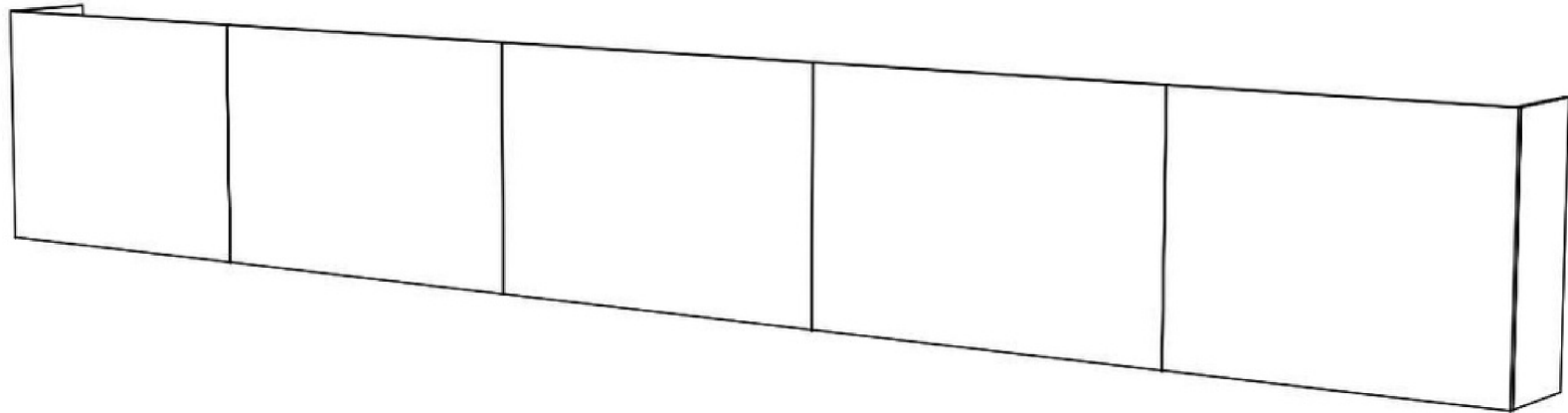
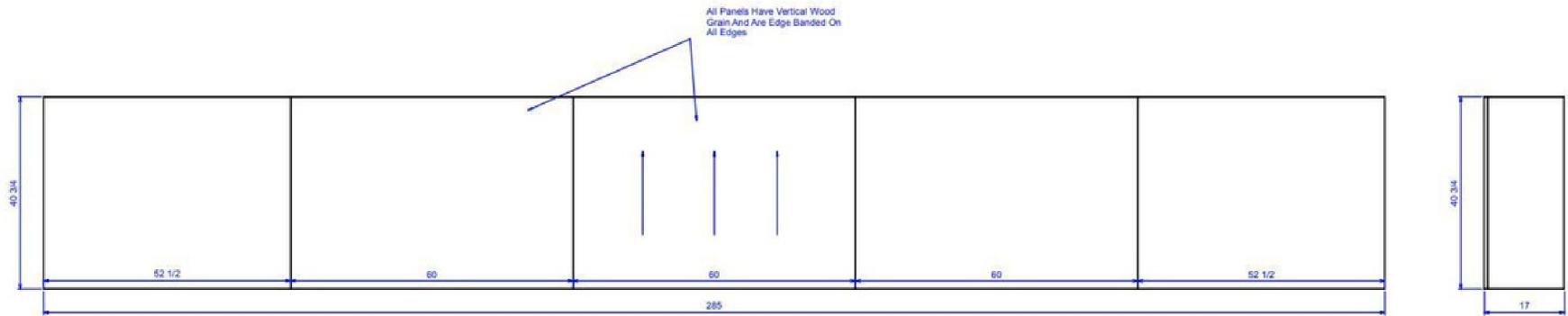
# D - Millwork | Bar Panels



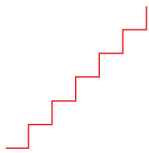
PROVIDED BY: SSD INSTALLED BY: GENERAL CONTRACTOR

## Front bar panels

- ✂ GC to receive, unload & install
- ✂ GC to field cut on site, panels sent 4" long & 4" tall to ensure coverage



\*Drawings for reference only, refer to construction drawings and/or shop drawings per location



# E - LIGHTING

PROVIDED BY: SSD INSTALLED BY: GENERAL CONTRACTOR



## TYPE 1

Manufacturer/Model RAB recessed flat panel troffer

Finish White

Size 24" x 24"

Lamp Integrated LED 3500K

Location Break Room - qty. varies as needed per location

Mounting Height Mounted within grid in suspended ceiling per plans



## TYPE 2

Manufacturer/Model RAB recessed flat panel troffer

Finish White

Size 48" x 24"

Lamp Integrated LED 3500K

Location Break Room - qty. varies as needed per location

Mounting Height Mounted within grid in suspended ceiling per plans



## TYPE 5

Manufacturer/Model Progress Lighting/P500355-031

Finish Black

Size 5"L x 5"dia x 9.8"h - 130" cord

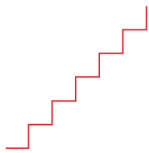
Lamp Integrated 120 watt high output LED

Location Entry, Shampoo, between cloud ceiling panels - qty./location Varies per location

Mounting Height 9' 6" AFF to bottom of fixture (bottom of light flush with cloud ceiling only within cloud ceiling) @ clouds only. Refer to construction drawings for AFF heights elsewhere.

Bulbs Included - SATCO S29431 (75w 120v E26 3000K)





# E - LIGHTING



**PROVIDED BY:** SSD **INSTALLED BY:** GENERAL CONTRACTOR

## TYPE 6

Manufacturer/Model WAC Lighting/WP-LED415-30-ABK POINT INWARD AT CHAIR

Finish Architectural Black

Size 6.75" w x 6.75" h

Lamp Integrated LED 3000K - Direct lamp at barber chair

Location Grooming area/Master Barber, refer to reflected ceiling plan

Mounting Height BASE of fixture at 9' 6" AFF (flush with bottom of cloud ceiling)

Install Spot to hang below cloud ceiling and pointed inward at nearest barber chair



## TYPE 7

Manufacturer/Model WAC Lighting/WP-LED430-30-ABK

Finish Architectural Black

Size 13" w x 16.5" h

Lamp Integrated LED 3000K - Direct lamp at barber chairs

Location Grooming area/Master Barber, refer to reflected ceiling plan

Mounting Height BASE of fixture at 9' 6" AFF (flush with bottom of cloud ceiling)

Install Spot(s) to hang below cloud ceiling and pointed inward at nearest barber chair. When used in Master Barber, surface mount to ceiling.



## TYPE 8

Manufacturer/Model Millennium Lighting Arm/RGN23-ASB, Shade/RES10-SB(RAS12-SB)

Finish Aluminum Satin Black

Size 23" x 14"

Lamp 100w equivalent 3000K LED - E26 - \*GC to provide

Location Shampoo back wall

Mounting Height 9' 6" AFF, Refer to reflected ceiling plan



## TYPE 9A

Manufacturer WAC Lighting Reed Single Light 25" Wide LED Picture Light

Finish Black

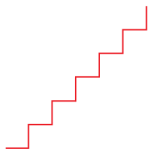
Size 11 1/4" x 3" x 24 1/2"

Lamp 3000k integrated LED

Location At feature wall

Mounting Height Can vary, refer to reflected ceiling plan





# E - LIGHTING



**PROVIDED BY:** SSD **INSTALLED BY:** GENERAL CONTRACTOR

## TYPE 10

Manufacturer/Model Envision square slim recessed panel downlight w/ junction box

Finish Black trim

Size 6" x 6"

Lamp Integrated LED 3000K

Location Restroom hard lids & hard lids as noted per plans

Mounting\_Height Surface mounted



## TYPE 11A/11B

Manufacturer/Model Nora NTE-864 Max Mini LED Track 41 degree spread Finish Black

Finish Black

Sizes:

(11A) = 3 Heads on black 2' single circuit track (NT-301)

(11B) = 4 Heads on black 4' single circuit track (NT-302)

Lamp Dimmable integrated LED 3000K

Location Refer to reflected ceiling plan

Mounting\_Height Refer to reflected ceiling plan



## TYPE 14

Manufacturer/Model Z-Lite Forrest Matte Black LED Two-Light Wall Sconce Finish Black

Size 4.75" x 3"

Lamp Integrated LED

Location Refer to construction drawings

Mounting\_Height Refer to construction drawings



## TYPE 15

Manufacturer/Model Maxim Early Electric Fabric Cord Pendant

Finish Black/Antique Brass

Size 3.5" x 2" x 2"

Lamp 60w Vintage Edison Incandescent Bulb Bulb 3000K - E26 \*GC TO PROVIDE

Location Lounge

Mounting\_Height 9' 6" AFF via 120" down cord





# E - LIGHTING



**PROVIDED BY:** SSD **INSTALLED BY:** GENERAL CONTRACTOR

## TYPE 17

Manufacturer Self powered universal mount MV 4w w/ battery back-up

Finish Black W/ red lettering (green okay if required by code)

Size 11 5/8" x 1 5/8" x 7 7/8"

Lamp Integrated LED

Location Refer to construction drawings

Mounting Height Refer to construction drawings and local code



## TYPE 18

Manufacturer/Model Emergency Lights w/ battery back-up 2-1.5w

Finish Black

Size 12" x 4 9/16"

Lamp Integrated ultra-bright white LED

Location Refer to construction drawings

Mounting Height Refer to construction drawings and local code



## TYPE 19

Manufacturer/Model Red Exit Sign & Emergency Light Combo MV 12w with Battery Backup

Finish Black W/ red lettering (green okay if required by code)

Size 21"L x 9"H x 4"D

Lamp Integrated ultra-bright white LED

Location Refer to construction drawings

Mounting Height Refer to construction drawings and local code



## CONTROL PANEL PROVIDED BY GC/SUB

Model CX Commercial Lighting Control Panel System per construction drawings

(If lead times are an issue, equal substitute to be Approved by SSD)





# F - Elements | Barber Chairs/Mats

PROVIDED BY: SSD INSTALLED BY: GENERAL CONTRACTOR



## Barber chairs in grooming

- ✂ GC to receive, unload & install
- ✂ Qty | 8 - 12 per location refer to construction drawings
- ✂ Chair placed in u-shaped indentation of mat, NOT anchored to floor

## Comfort mats at base of barber chairs

- ✂ GC to receive, unload & install
- ✂ Qty | x1 per barber chair
- ✂ Size | 48" x 60"
- ✂ 60" side of mat parallel to barber station placed 22" from barber station face, centered on mirror



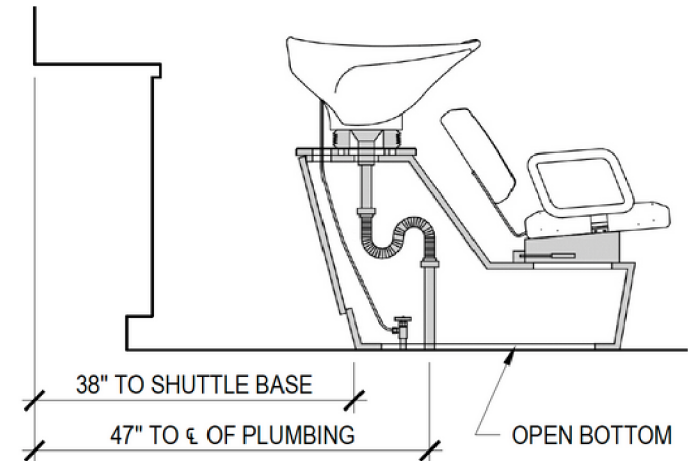
# F - Elements | Shampoo shuttles

PROVIDED BY: SSD INSTALLED BY: GENERAL CONTRACTOR



## Shampoo shuttles in grooming

- ✂ GC to receive, unload & install
- ✂ Qty | 3 - 5 per location refer to construction drawings
- ✂ Rear base of shampoo shuttles 38" off wall (coordinate plumbing per construction drawings)



# F - Elements | Bar Equipment

PROVIDED BY: SSD INSTALLED BY: GENERAL CONTRACTOR



## Kegeator

- ✂ GC to receive, unload & install
- ✂ Manufacturer/Model | Avantco UDD-48-HC Kegeator Beer Dispenser or \*60" option dependent on space - refer to construction drawings
- ✂ Size | 48-<sup>3</sup>/<sub>4</sub>"w x 24-<sup>1</sup>/<sub>2</sub>"d x 35-<sup>5</sup>/<sub>8</sub>"h
- ✂ Qty | x1 per location
- ✂ Once kegeator is in place, field cut single tap/drain hole in granite countertop to allow tap to be connected directly to unit



## Cooler

- ✂ GC to receive, unload & install
- ✂ Manufacturer/Model | Avantco 48" Counter Height Narrow Glass Door Back Bar Refrigerator with LED Lighting/UBB-48G-HC or 60" option dependent on space - refer to construction drawings
- ✂ Size | 48-<sup>3</sup>/<sub>4</sub>"w x 25-<sup>3</sup>/<sub>4</sub>"d x 35-<sup>5</sup>/<sub>8</sub>"h
- ✂ Qty | x1 per location



## Ice machine

- ✂ GC to receive, unload & install
- ✂ Manufacturer/Model | Motak KT-UI-75
- ✂ Size | 16.7" w x 21" d x 32.7" h
- ✂ Qty | x1 per location



## Ice bin

- ✂ GC to receive, unload & install
- ✂ Manufacturer/Model | Regency Underbar Ice Bin with 7 Circuit Post-Mix Cold Plate and Bottle Holders - 77 lb
- ✂ Size | 24"w x 18.5"d x 33"h
- ✂ Qty | x1 per location



# G - Interior Doors | Glass Door & Sidelite



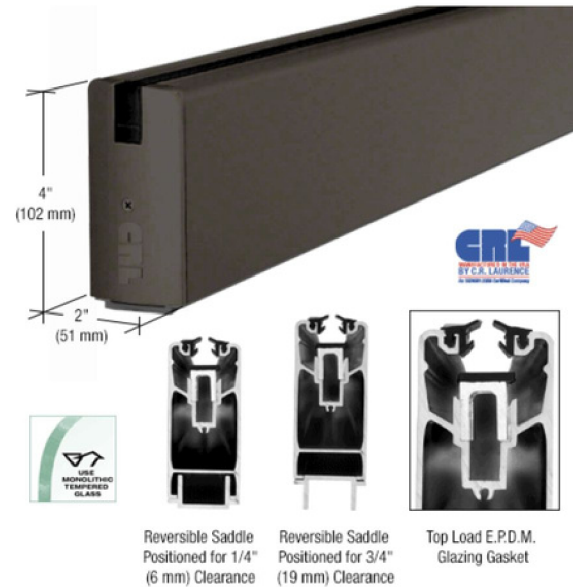
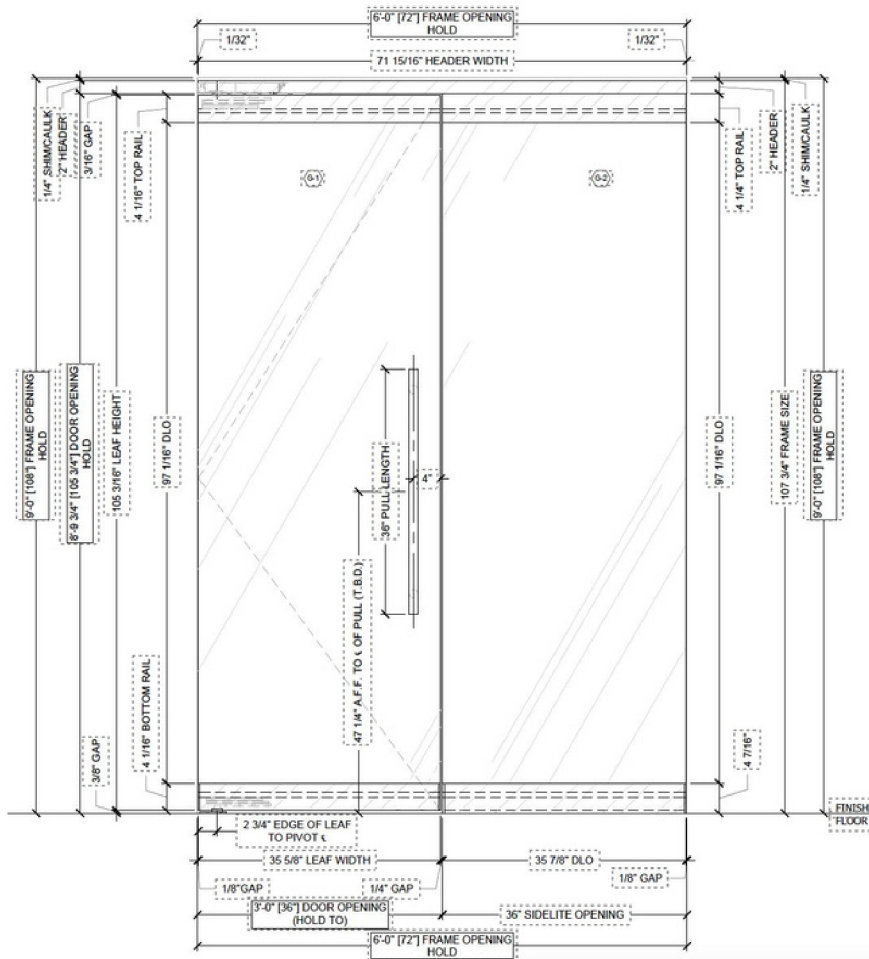
**PROVIDED BY:** GENERAL CONTRACTOR **INSTALLED BY:** GENERAL CONTRACTOR

## 🗄️ Glass door & sidelite from lounge to in grooming

- ✂️ GC to provide finished opening per construction drawings
- ✂️ GC to determine best location for floor mounted door stop(s)
- ✂️ NOTE | Sidelite size may vary per location, refer to construction drawings

## 🗄️ Finish

- ✂️ Black anodized aluminum w/ 1/2" clear tempered glazing and black anodized hardware per door schedule



# G - Interior Doors | Glass Door & Sidelite



**PROVIDED BY:** GENERAL CONTRACTOR **INSTALLED BY:** GENERAL CONTRACTOR

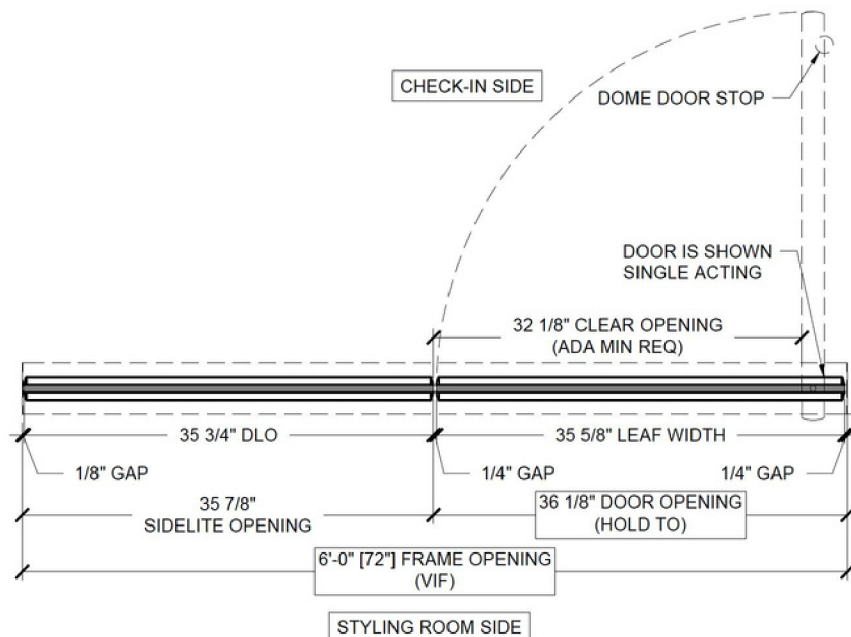
*\*For reference only - see construction drawings & approved shop drawings as door size & orientation may change per location – Drawings not to scale*

## SPECIFICATIONS

### INTERIOR ENTRANCE DOORS:

DOOR OPENING 3'-0 1/8" x 8'-10 5/16" x 1 27/32" TYPE P GLASS DOOR

- 4" SQUARE DOOR RAILS
- FINISH: F1 BLACK ANODIZED
- GLAZING: G-1 1/2" CLEAR TEMPERED GLASS
- HARDWARE - FINISH F1 OR EQUAL
  - ONE (1) 1 1/4" X 36" STRAIGHT BTB LADDER PULLS
  - ONE (1) DORMA RTS88 OVERHEAD CONCEALED CLOSER - BFI / NHO
  - ONE (1) CRL INT307DU (6" X 1/2" SQ) DOOR STOP - FINISH: F1 (NOT USED FOR DOUBLE ACTING DOOR)
  - TWO (2) CRL DL2501DU 5/32" SURFACE APPLIED DOME STOP
  - ONE (1) DORMA 7471K FLOOR BEARING PIVOT
  - ONE (1) AMR209DU DUST PROOF STRIKE
  - ONE (1) CRL DRA20DU THUMBTURN - FINISH: DARK BRONZE
  - ONE (1) CRL DRA10DU MORTISE KEYED CYLINDER - FINISH: DARK BRONZE
- TURN KEY DOORS WITH ALL HARDWARE INSTALLED AND TESTED PRIOR TO SHIPMENT
- CRATED FOR SHIPMENT



# G - Interior Doors | Solid Core Doors

PROVIDED BY: GENERAL CONTRACTOR INSTALLED BY: GENERAL CONTRACTOR



## 🗄️ Solid core wood veneer interior doors

✂️ Refer to door schedule for size, qty & hardware

✂️ Specs:

- Grade: AWI Premium, with Grade A faces
- Species and Cut: Rift cut oak
- Match between Veneer Leaves: Book match
- Assembly of Veneer Leaves on Door Faces: Balance match
- Exposed Vertical and Top Edges: Same species as faces
- Core: Particleboard
- Construction: Seven plies, either bonded or non-bonded construction

NOTE:  
SOLID CORE  
WOOD VENEER  
DOOR PER  
SPECIFICATIONS



FLUSH SOLID CORE  
WOOD DOOR

## 🗄️ Finish | WC1

✂️ Stain to match wainscot - SSD sample approval required

**1FSW**

## 🗄️ Hollow metal door frames

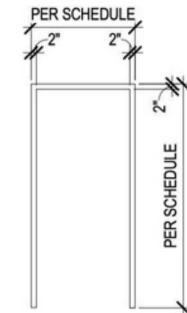
✂️ Refer to door schedule

## 🗄️ Finish | P1

✂️ Black Fox w/ eggshell sheen

TYPICAL HOLLOW METAL FRAME  
NOTES:

- 16 GAUGE COLD ROLLED STEEL
- WELDED FRAME GROUND SMOOTH
- 3 SILENCER HOLES PER STRIKE
- 2 SILENCER HOLES PER HEAD
- 14 GAUGE STRIKE REINFORCED PLATE
- 12 GAUGE CLOSER REINFORCED PLATE
- PRE-PRIMED (GRAY)
- 9 GAUGE UNIVERSAL HINGE TAP PLATES PROJECTION WELDED FOR 4 1/2" TEMPLATE TYPE HINGES



HOLLOW METAL FRAME

**HM1**

## 🗄️ Hollow core pocket door

✂️ Refer to door schedule, not designed into all locations

## 🗄️ Finish | WC1

✂️ Stain to match wainscot - SSD sample approval required

# H - Misc | Bathroom Accessories



**PROVIDED BY:** GENERAL CONTRACTOR **INSTALLED BY:** GENERAL CONTRACTOR

## ADA handicap grab bars

- ✂ GC to supply backing in wall and anchors as appropriate, finish anchor heads to match
- ✂ grab bars per construction drawings and mounted per ADA requirements
- ✂ Manufacturer | Bobrick
- ✂ Qty, Size | Per construction drawings

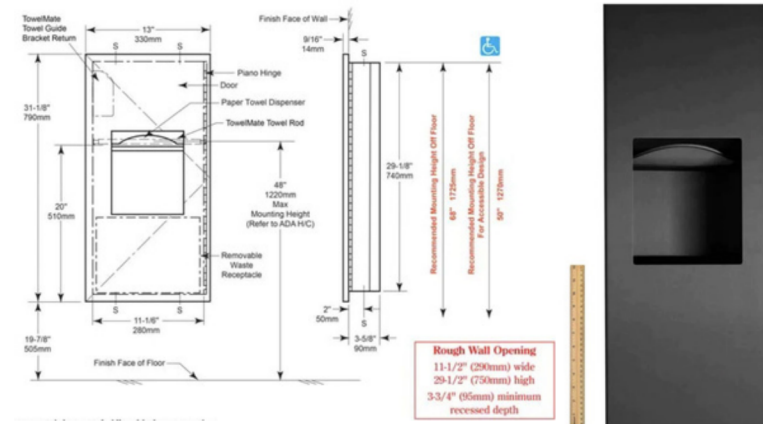


## Finish | Black

## Towel dispenser open trash

- ✂ Install per construction drawings and codes/requirements
- ✂ Manufacturer, model | Bobrick #B-36903.MBLK

## Finish | Black



## Toilet paper holder

- ✂ Install per construction drawings and codes/requirements
- ✂ Manufacturer, model | Kibi USA #KBA1209BG

## Finish | Black



# H - Misc | Bathroom Signage & Mirrors

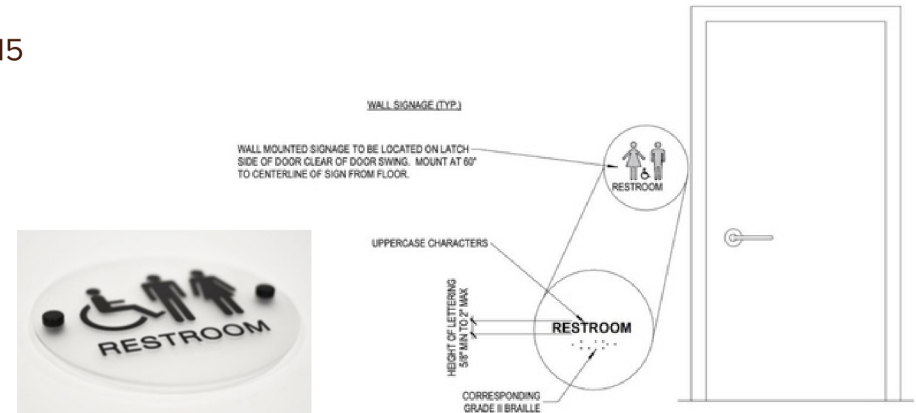


PROVIDED BY: GENERAL CONTRACTOR    INSTALLED BY: GENERAL CONTRACTOR

## Men's, Women's & ADA signage at bathrooms

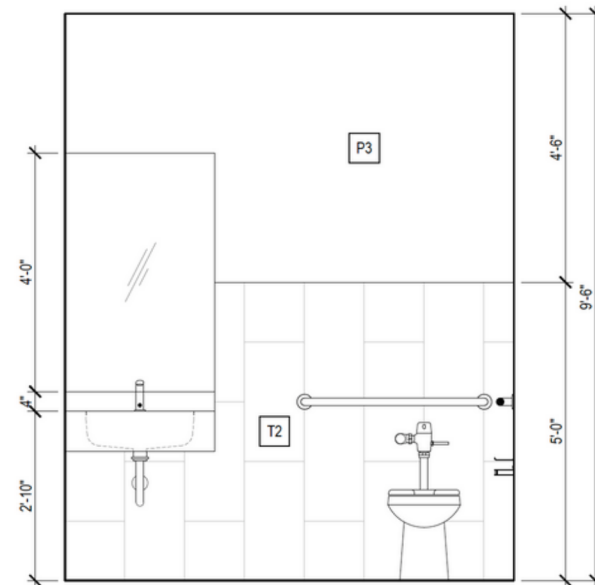
- ✂ Manufacturer, Model | Office Sign Company #4020-002915
- ✂ Qty, Size | 9.5" round, x1 per bathroom

## Finish | Matte Frosted Acrylic w/ two black standoffs

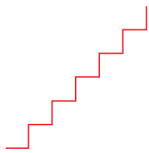


## Bathroom mirrors

- ✂ Install per construction drawings and codes/requirements
- ✂ 48" h x entire width of countertop (refer to construction drawings to confirm width)
- ✂ Frameless wall mount mirrors
- ✂ Bottom of mirror starts at top of backsplash







# H - Misc | Sinks & Faucets



**PROVIDED BY:** GENERAL CONTRACTOR **INSTALLED BY:** GENERAL CONTRACTOR

- Refer to construction drawings for final equipment specs

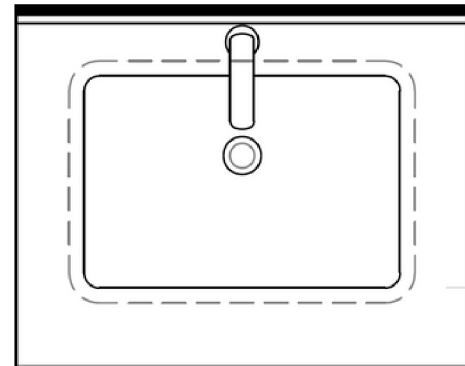
## **Prep area in grooming**

- ✂ Undermount sink w/ faucet hole in granite to account for spout angle. Cut faucet hole and install so stream lands on or as close to drain as possible
  - Sink
    - Miseno undermount sink with overflow ([MNO2114ABWH](#)), Bright White
  - Faucet
    - Native Trails 1-1/2" Teardrop Drain ([DR150-CH](#)), Chrome
  - Mixing Valve
    - Toto thermostatic mixing valve ([TLT10R](#))
- ✂ Confirm specs with construction drawings in case codes require changes or sink specs change due to space requirements



## **Granite cutout details**

- ✂ Refer to construction drawings, sink layouts are restroom specific
- ✂ Center sink on countertop right to left per sink dimensions on construction drawings
- ✂ GC to confirm clearance from sink cutout to backsplash to accommodate fixtures
- ✂ Round all corners and finish cut edges (see page A3)



# H - Misc | Sinks & Faucets



PROVIDED BY: GENERAL CONTRACTOR    INSTALLED BY: GENERAL CONTRACTOR

## Restrooms

- ✂ Undermount - Sink cutout max 1-1/4" from drywall to back of granite (not from tile - tile will allow faucet to stand off wall and allow for stream to hit as close to center of strainer as possible)

### Sink

- Kohler Cairn 15-1/2" undermount single basin stone composite bar sink ([K-8223-CM1](#)), Matte Black

### Faucet

- Delta Trinsic 1.2GPM wall mounted faucet ([T3559LF-BLWL](#)), Matte Black

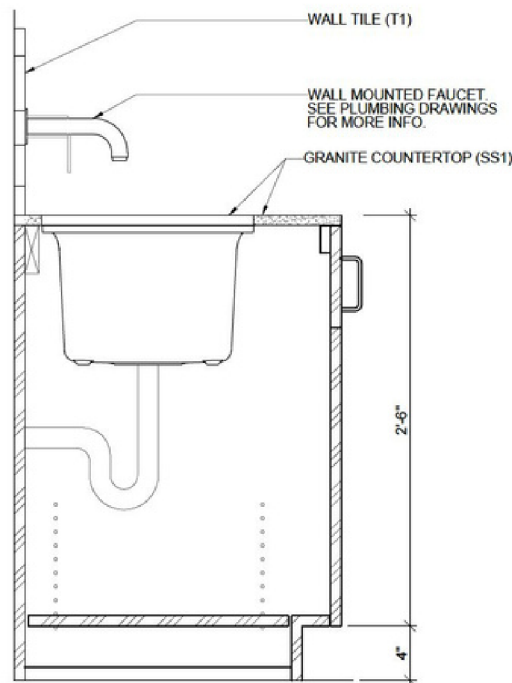
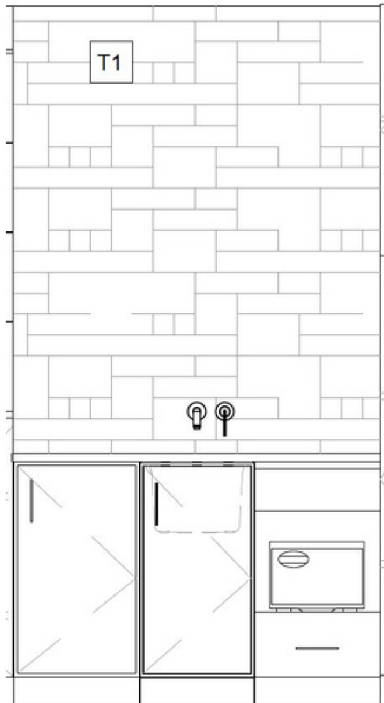
### Drain Assembly

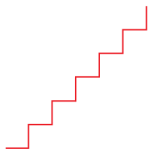
- Kohler Duostrainer 3-1/2" basket strainer ([K-8801-BL](#)), Matte Black

### Mixing Valve

- Toto thermostatic mixing valve ([TLT10R](#))

- ✂ Confirm specs per construction drawings in case codes require changes or sink specs change due to space requirements





# H - Misc | Sinks & Faucets



**PROVIDED BY:** GENERAL CONTRACTOR **INSTALLED BY:** GENERAL CONTRACTOR

- Refer to construction drawings for final equipment specs

## **Front bar**

✂ GC to install per construction drawings

### Hand Sink

- Regency 17" x 15" Wall Mount Hand Sink with Gooseneck Faucet (600HS17SP)



### 3 Comp Sink

- Regency 3 Bowl Underbar Sink with Two Faucets and Two 18" Drainboards (600B31014219) Installation - Optional model (60B31014213)
- \*Size and drainboard count TBD per site specific health code requirements



### Break Room Sink

- Regency 20" x 16" x 12" one compartment drop in sink with gooseneck faucet (600DI12016R)
- Install per construction drawings in millwork provided by SSD - GC to install disposal





# H - Misc | USB Outlets



**PROVIDED BY:** GENERAL CONTRACTOR **INSTALLED BY:** GENERAL CONTRACTOR

## Front bar

- ✂ GC to install per construction drawings
- ✂ Typically used in lounge and at face of front bar
- ✂ Type A & Type C USB Charger with outlets
- ✂ Finish | Black
- ✂ Typically available for purchase via Amazon if sourcing/time becomes an issue



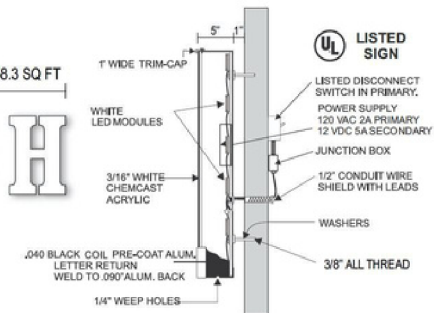
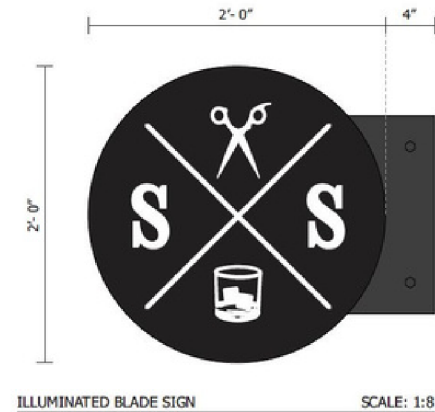
# I - Signage | Exterior Storefront Sign(s)

PROVIDED BY: OWNER SOURCED VENDOR    INSTALLED BY: OWNER SOURCED VENDOR    PREP BY: GC



## Storefront sign(s)

✂ GC to provide electrical connections inside space per shop drawings, construction drawings and local code



*\*NOTE: Sign sizing will vary based on corporate standards, leased space length, landlord criteria and the municipal code.*



# CL - Change Log



## 4.1 - 8/2024

Wallcoverings | Feature Wall | Logo

B1 - B3

Updated new design

Specialty Finishes | Cloud Ceiling

C1

Updated new design

Millwork | Brarber Stations

D3

Updated mirror frame design/install