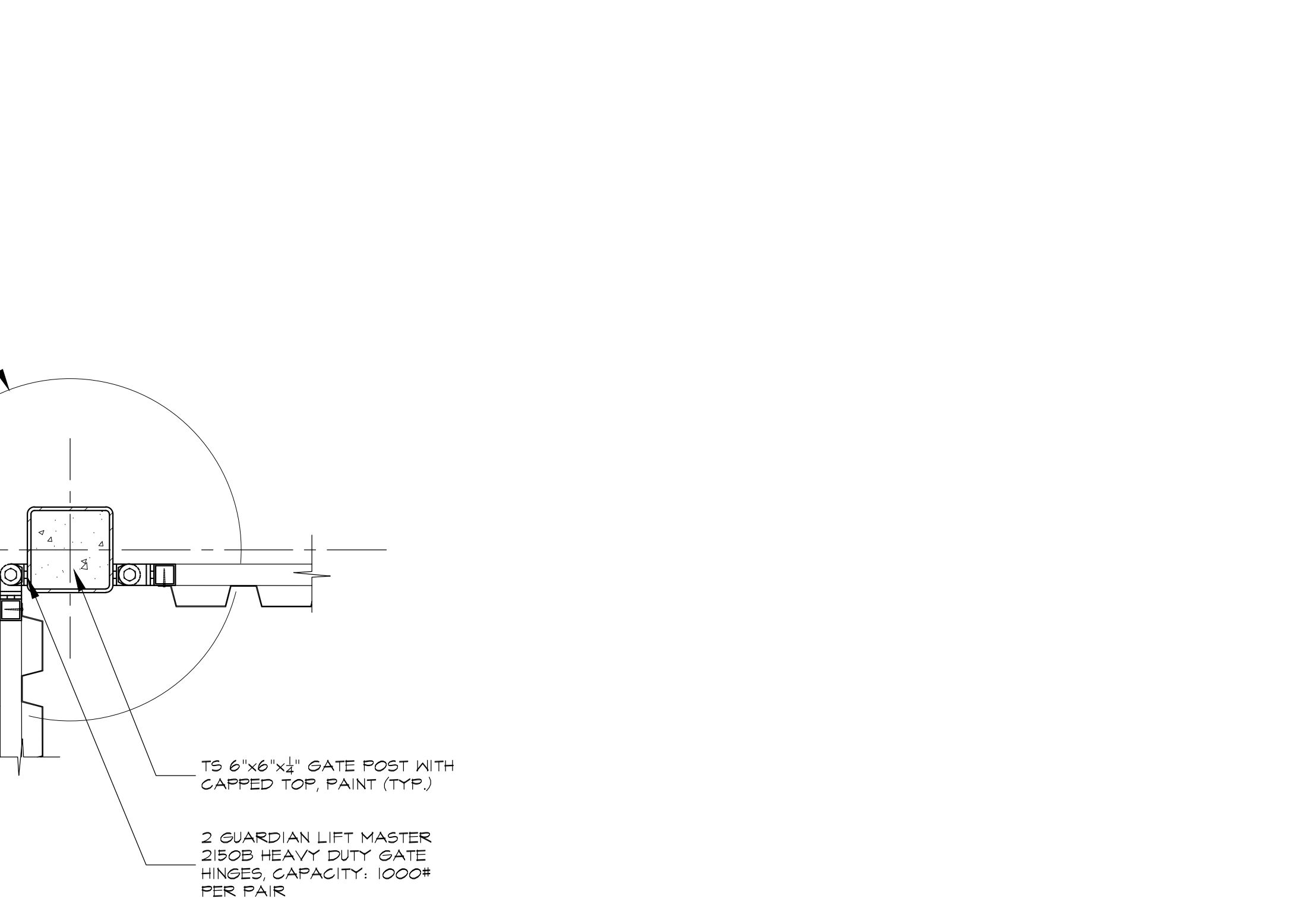
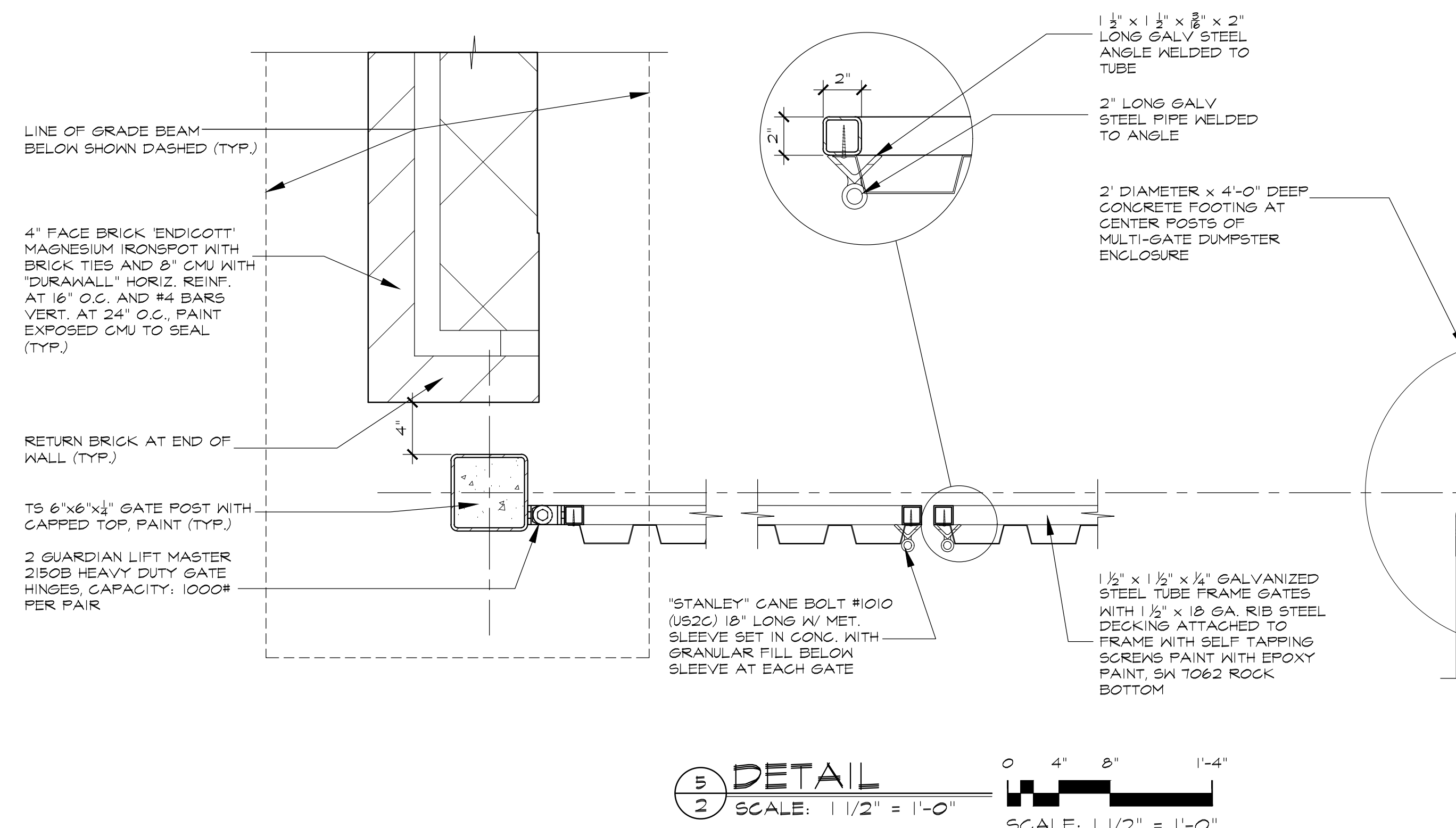
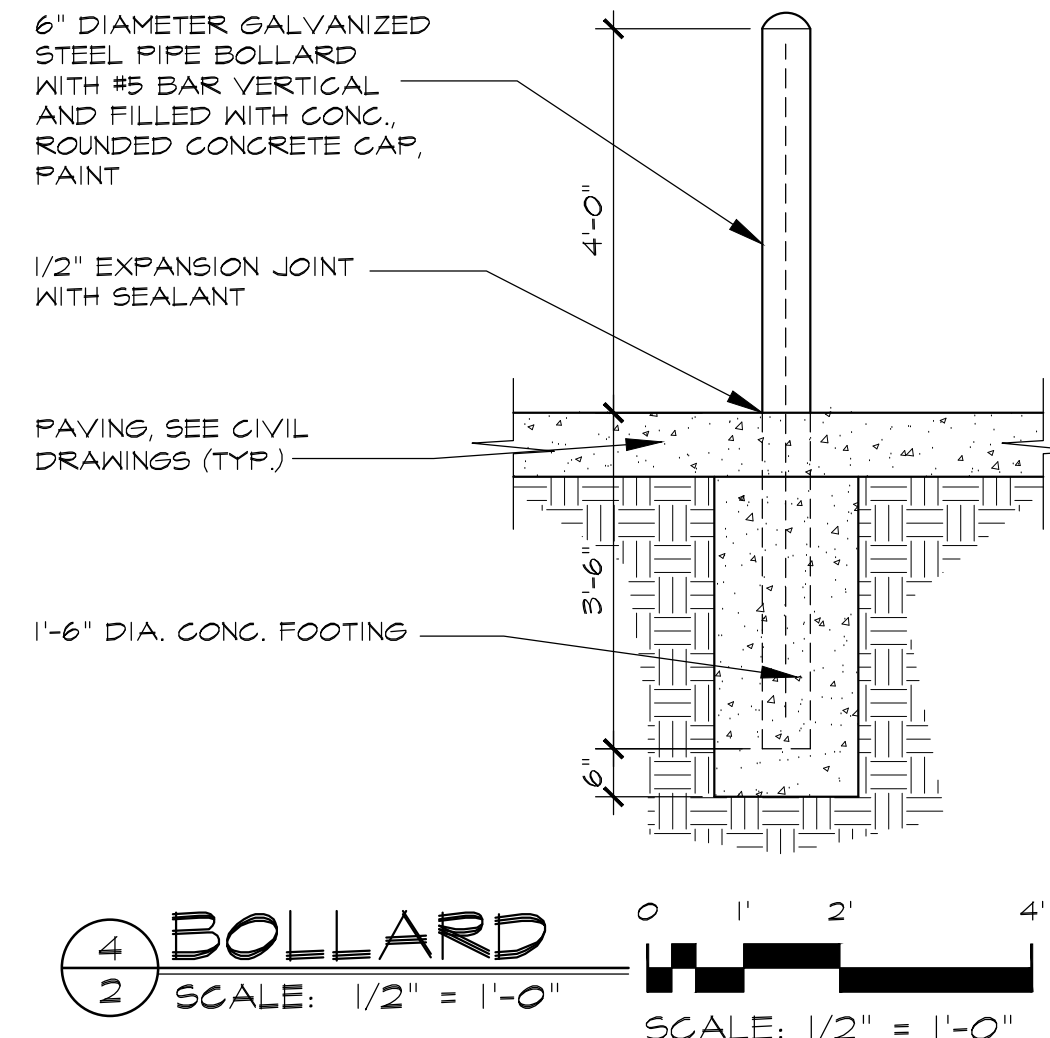
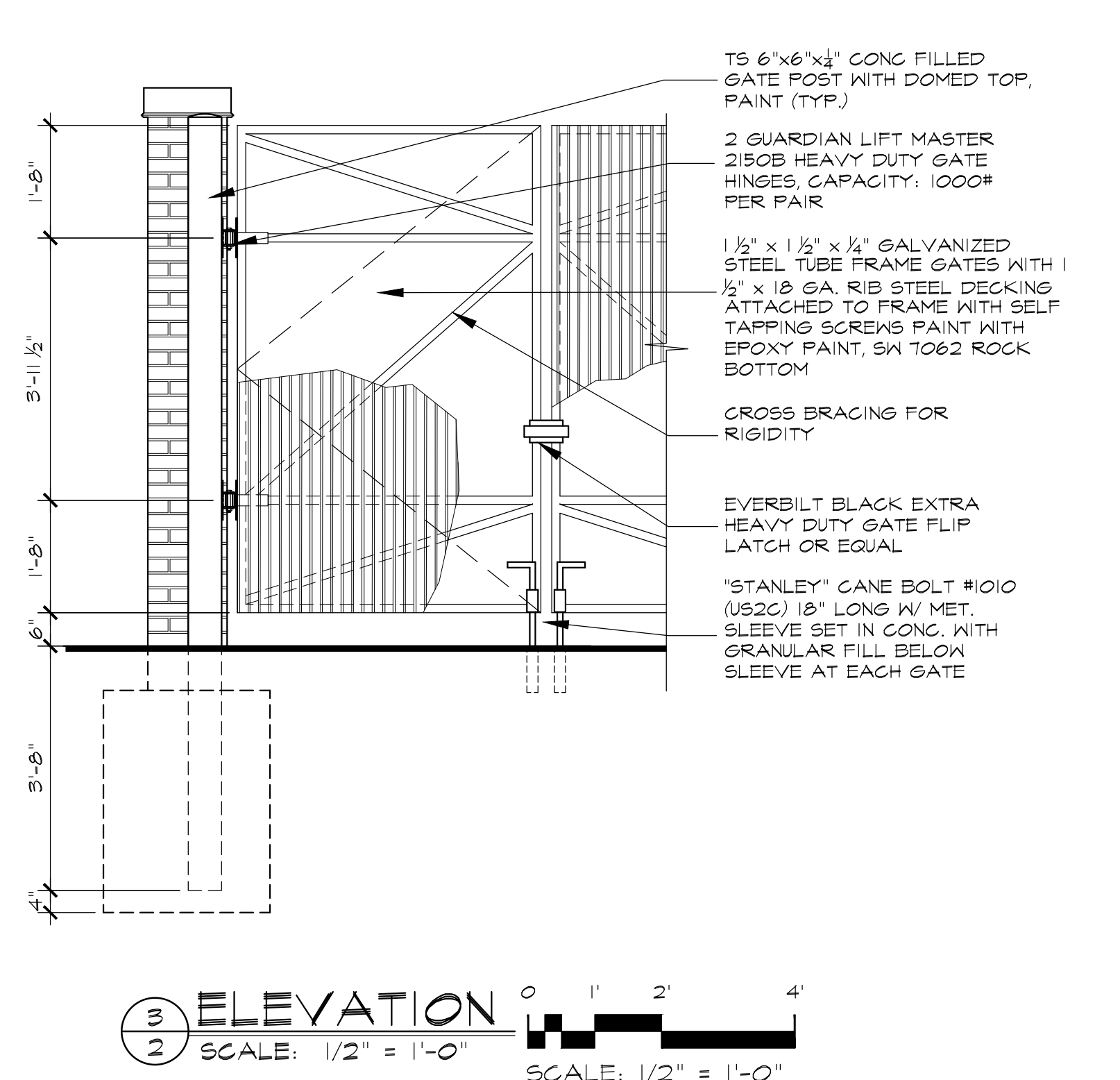
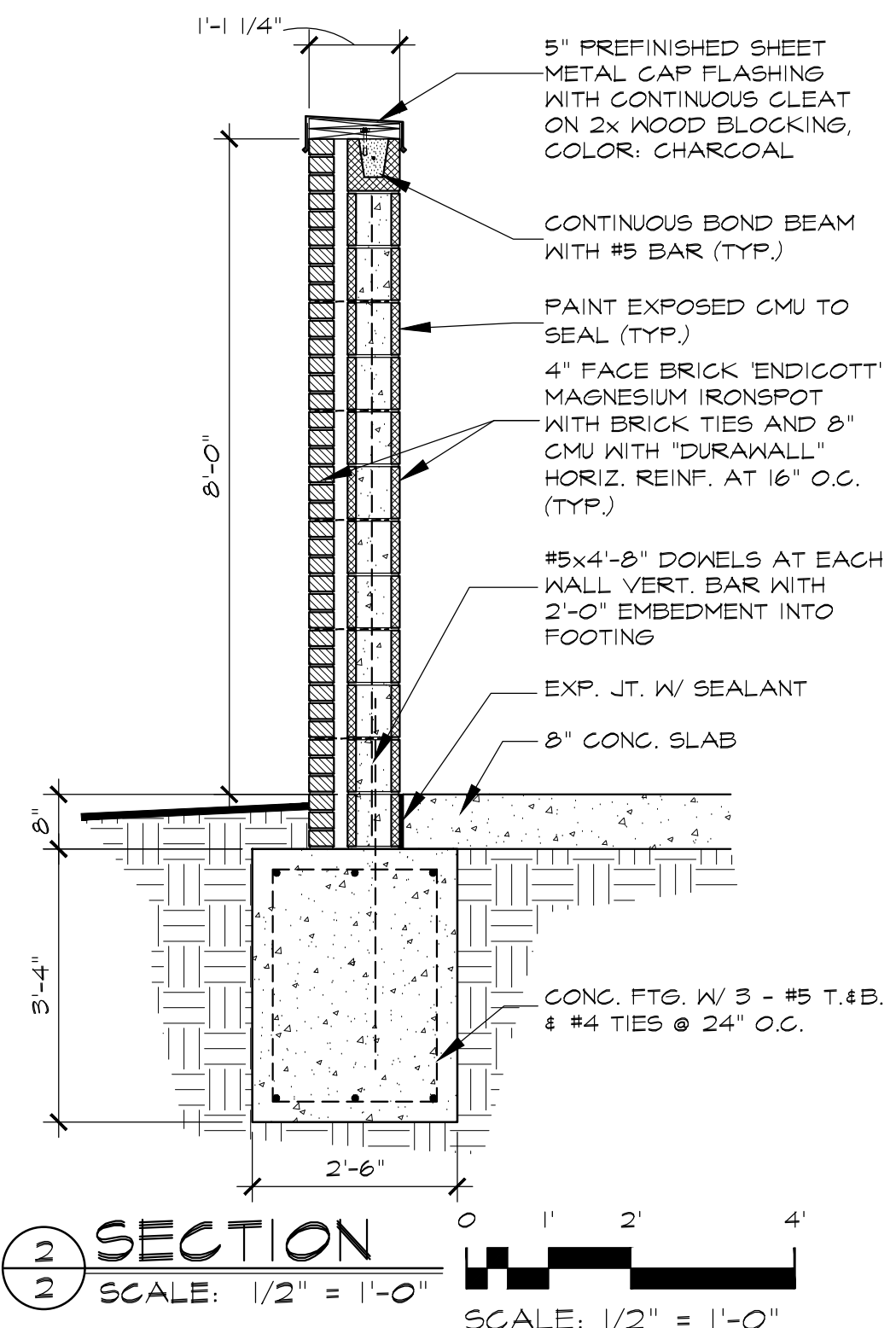


GENERAL NOTES:
 1. SEE SITE PLAN FOR LOCATIONS AND SIZE OF ENCLOSURES USED.
 2. ALL EXPOSED STEEL SHALL BE GALVANIZED AND PAINTED WITH EPOXY PAINT.



11/11/24
 SEALING NOTICE:
 THESE DOCUMENTS ARE
 EXEMPT FROM THE
 SEALING REQUIREMENTS
 PER THE STATE OF
 NEBRASKA ENGINEERS
 AND ARCHITECTS
 REGULATION ACT,
 CHAPTER 10 BASED ON
 THE SIZE AND SCOPE
 OF THE PROJECT.