

CIVIL GENERAL NOTES:

1. ALL WORK SHALL BE DONE IN ACCORDANCE WITH THE REQUIREMENTS OF THE CITY OF OMAHA STANDARD SPECIFICATIONS FOR PUBLIC WORKS CONSTRUCTION, 2024 EDITION, AND CUSTOMER SPECIFICATIONS, EXCEPT AS MODIFIED BY THE DETAILED SPECIFICATIONS. IF A CONFLICT EXISTS BETWEEN THE DETAILED SPECIFICATIONS AND THE MORE STRINGENT SPECIFICATIONS, THE MORE STRINGENT SPECIFICATIONS SHALL GOVERN AS DETERMINED BY THE ENGINEER.
2. THE LOCATIONS OF ALL AERIAL AND UNDERGROUND UTILITY FACILITIES ARE APPROXIMATELY LOCATED AS INDICATED IN THESE PLANS. UNDERGROUND FACILITIES, WHETHER INDICATED OR NOT, SHALL BE LOCATED AND FLAGGED BY THE UTILITIES AT THE REQUEST OF THE CONTRACTOR. NO EXCAVATION SHALL BE MADE IN THE UNDERGROUND UTILITY FACILITIES UNLESS THEY HAVE BEEN IDENTIFIED AND IDENTIFIED TO THE SATISFACTION OF ALL PARTIES AND THEN ONLY WITH EXTREME CARE TO AVOID ANY POSSIBILITY OF DAMAGE TO THE UTILITY FACILITY. IT SHALL BE THE RESPONSIBILITY OF THE CONTRACTOR TO PROTECT ALL EXISTING UTILITIES, PAVEMENT, AND OTHER IMPROVEMENTS. ANY DAMAGE TO EXISTING UTILITIES AND/OR PAVED STREETS CAUSED BY CONSTRUCTION OPERATIONS SHALL BE REPAIRED AT THE CONTRACTOR'S EXPENSE.
3. THE CONTRACTOR SHALL CALL FOR THE EXISTING UTILITY LOCATION STAKES (NEBRASKA 811) 48 HOURS PRIOR TO DIGGING. CALL ALL APPLICABLE UTILITY COMPANIES INCLUDING, BUT NOT LIMITED TO, THE FOLLOWING:
CITY OF OMAHA UTILITY COMPANIES INDEX:
 BURIED CABLE LOCATIONS
 CALL 48 HOURS BEFORE YOU DIG.....811
 CENTURY LINK TELEPHONE COMPANY.....800-283-4237
 OMAHA PUBLIC POWER DISTRICT.....531-226-2000
 METROPOLITAN UTILITIES DISTRICT - GAS & WATER.....402-554-7921
 CITY OF OMAHA - PUBLIC WORKS.....402-444-5220
 MO TELECOMMUNICATIONS.....402-571-5450
 CABLE TELEVISION.....(VERIFY WITH LOCAL GOVERNING AGENCIES)
4. THE CONTRACTOR SHALL ADJUST TO GRADE ALL WATER AND GAS VALVE BOXES AND HOLES THAT FALL WITHIN THE LIMITS OF THIS CONTRACT (NO PAY ITEM). THE CONTRACTOR SHALL KEEP ALL SAID WATER, GAS, AND EXISTING SEWERS AND THEIR APPURTENANCES FREE OF DEBRIS AND CLEAN AT ALL TIMES DURING CONSTRUCTION.
5. ELEVATIONS SHOWN HEREON ARE NAVD88 DATUM.
6. BENCHMARK: FINISHED FLOOR (SW ENTRANCE) OF #600 N 93RD STREET. ELEVATION: 1200.58' (TILE).
7. ALL DEBRIS RESULTING FROM CONSTRUCTION OPERATIONS SHALL BE HAULED OFF-SITE AND PROPERLY DISPOSED OF.
8. THE CONTRACTOR SHALL FURNISH AND MAINTAIN ALL NECESSARY BARRICADES, WARNING SIGNS, LIGHTS, AND FLAGMAN AS PER THE "BARRICADING STANDARDS, SPECIFICATIONS, METHODS AND MATERIALS MANUAL OF THE CITY OF OMAHA" AND AS DIRECTED BY THE ENGINEER. COST SHALL BE CONSIDERED INCIDENTAL TO THE PROJECT.
9. PROTECT, BY WHATEVER MEANS REQUIRED, ALL MAILBOXES, FENCES, SIGNS, STRUCTURES, SIDEWALKS, STREETS, POLES, BUSHES, TREES, ETC. WHICH ARE NOT DESIGNATED FOR REMOVAL OUTSIDE THE CONSTRUCTION AREAS. THE CONTRACTOR SHALL KEEP ALL VEHICLES, EQUIPMENT, MATERIALS, AND CONSTRUCTION ACTIVITIES OUTSIDE THE LIMITS OF THE CANOPIES OF ANY TREE.
10. ALL DIMENSIONS AND ELEVATIONS MARKED WITH AN ASTERISK (*) SHALL BE FIELD MEASURED PRIOR TO CONSTRUCTION. NOTIFY THE ENGINEER OF ANY CONFLICTS WITH THE DRAWINGS PRIOR TO CONSTRUCTION.
11. PROVIDE POSITIVE DRAINAGE AT ALL TIMES WITHIN THE CONSTRUCTION AREAS. NO STANDING WATER SHALL BE ALLOWED. MAINTAIN ALL EXISTING DRAINAGE PATTERNS.
12. THE CONTRACTOR MUST ADHERE TO GOOD HOUSEKEEPING BEST MANAGEMENT PRACTICES AT ALL TIMES. FOCUS ON KEEPING THE WORK SITE CLEAN AND ORDERLY WHILE HANDLING MATERIALS AND WASTE IN A MANNER THAT ELIMINATES THE POTENTIAL FOR POLLUTANT RUNOFF.
13. CONTRACTOR SHALL OBTAIN ALL PERMITS AND PAY ALL PERMIT AND OTHER ASSOCIATED FEES REQUIRED TO COMPLETE THE PROJECT. COST SHALL BE CONSIDERED INCIDENTAL TO THE PROJECT.
14. PAVING DIMENSIONS ARE AS SHOWN ON THE PLANS. ALL DIMENSIONS ARE BACK-OF-CURB TO BACK-OF-CURB.
15. THE CONTRACTOR SHALL CONSTRUCT ALL PAVEMENTS TO CONFORM WITH THE CORRECT CROSS SECTIONS, LINES, AND FINISH GRADES AS INDICATED ON THE PLANS. NO PONDING OF WATER SHALL BE ALLOWED.
16. ALL CONCRETE FOR PAVEMENT AND INTEGRAL CURB AND GUTTERS SHALL BE IN ACCORDANCE WITH THE CITY OF OMAHA STANDARD SPECIFICATIONS FOR PUBLIC WORKS CONSTRUCTION 2024 EDITION. CURING COMPOUND SHALL BE AS PER THE REFERENCED SPECIFICATIONS. PAVEMENT TESTING AND JOINT SEALING SHALL BE DONE IN ACCORDANCE WITH THE REFERENCED SPECIFICATIONS AND DETAILS OF THESE PLANS. SEE GENERAL NOTE 20 FOR FURTHER INSTRUCTION.
17. CONCRETE PAVEMENT SHALL BE CURED AS PER REFERENCED SPECIFICATIONS. THE RATE OF APPLICATION SHALL BE 1 GAL/200 SF IF A MECHANICAL-POWERED SPRAYER IS USED AND 1 GAL/100 SF IF A HAND-POWERED SPRAYER IS USED.
18. CURB BACKFILLING SHALL BE COMPLETED WITHIN 4 TO 7 WORKING DAYS AFTER CURB PLACEMENT.
19. WATER-REDUCING ADMIXTURE SHALL BE ADDED TO ALL HAND-PLACED AND FINISHED CONCRETE.
20. A DIAMOND EDGE SAW BLADE SHALL BE USED FOR CUTTING ALL REQUIRED CONSTRUCTION AND LONGITUDINAL PAVEMENT JOINTS AND CONCRETE REMOVAL. NEW DIAMOND EDGE SAW BLADES WILL BE REQUIRED ON ALL SAWS AT THE BEGINNING OF THE PROJECT. SAW BLADES MUST THEN BE CHECKED PRIOR TO EACH SUBSEQUENT USE FOR WEAR AND REPLACED WHEN NECESSARY TO AVOID RAVELING AND ABSORPTION AT AND AROUND JOINTS. ALL REMOVALS SHALL BE FULL DEPTH SAW CUT. NO EARLY ENTRY SAW CUTTING METHODS WILL BE ALLOWED ON THIS PROJECT.
21. CONTRACTOR SHALL APPLY PENETRATING CONCRETE SEALER TO COMPLETELY SATURATE BOTH INSIDE VERTICAL FACES OF ALL SAWCUT PAVEMENT JOINTS. PENETRATION CONCRETE SEALER SHALL BE ON THE NEBRASKA DEPARTMENT OF TRANSPORTATION (NDOT) APPROVED PRODUCT LIST (APL) FOR INTENDED APPLICATION. FOLLOW MANUFACTURER'S RECOMMENDATIONS FOR TIMING OF THE APPLICATION OF THE SEALER AFTER CONCRETE PLACEMENT. ALL PAVEMENT JOINTS SHALL BE BLOWN OUT BY COMPRESSED AIR. SHOULD ANY MATERIAL BE OBSERVED IN THE JOINT, THE CONTRACTOR SHALL REMOVE IT TO THE SATISFACTION OF THE ENGINEER USING WHATEVER MEANS NECESSARY INCLUDING APPLICATION SHALL BE PERFORMED PRIOR TO JOINT SEALANT. CONTRACTOR SHALL NOTIFY THE SEALANT SCHEDULE.
22. CONTRACTOR IS RESPONSIBLE FOR COORDINATING WITH ALL UTILITY COMPANIES REGARDING SCHEDULING OF INSTALLATION AND SHARING THE PROJECT SITE. PHASING OF CONSTRUCTION SHALL BE ALTERED BASED ON THE MOST EFFICIENT INSTALLATION OF INFRASTRUCTURE AND UTILITIES.
23. EHRHART GRIFFIN & ASSOCIATES SHALL PROVIDE CONTROL AND/OR PERFORM ALL CONSTRUCTION STAKING FOR THE PROJECT. THE COST OF STAKING SERVICES WILL BE NEGOTIATED AT THE TIME OF CONTRACTOR BID PREPARATIONS. THE STAKING WILL BE PROVIDED ON A ONE TIME BASIS. THEREFORE IT WILL BE THE RESPONSIBILITY OF THE CONTRACTOR TO PROTECT THE STAKES FROM BEING DISTURBED OR REMOVED. RE-STAKING WILL BE BILLED HOURLY. CONTACT THE SURVEY DEPARTMENT AT SHANE BAKER, 402-551-2300) 48 HOURS IN ADVANCE FOR STAKING FEE QUOTE. STAKING SCHEDULED TO ENSURE THAT THE SITE IS CLEAR OF OBSTRUCTIONS IN THE REQUESTED AREA.

SAINT TIMOTHY'S LUTHERAN CHURCH

PARKING LOT REHABILITATION

510 NORTH 93RD STREET OMAHA, NEBRASKA



NOTE:

(STATEMENTS PRIOR TO DIG)

INDEX OF DRAWINGS

GENERAL NOTES

C6.1 MISCELLANEOUS DETAILS
 C7.1 OVERALL STORM PLAN
 C7.2-C7.3 STORM PLAN AND PROFILES
 C7.4-C7.5 STORM DETAILS
 C8.1 OVERALL PHASING PLAN

ELECTRICAL PLANS

E0.0 ELECTRICAL SYMBOLS AND ABBREVIATIONS
 ED1.1 ELECTRICAL DEMOLITION SITE PLAN
 E1.1 ELECTRICAL SITE PLAN
 E2.0-E2.1 ELECTRICAL SPECIFICATIONS

LANDSCAPING PLANS

L000 LANDSCAPE NOTES
 L100 HARDSCAPE PLAN
 L200 SITE DETAILS
 L300 LANDSCAPE PLAN
 L400 LANDSCAPE DETAILS

VICINITY MAP

E.G.A. PROJECT NO. 221022C



LEGAL DESCRIPTION

LOT ONE (1), ST. TIMOTHY'S ADDITION, AN ADDITION TO THE CITY OF OMAHA, IN DOUGLAS COUNTY, NEBRASKA.

BENCHMARK

ELEVATIONS SHOWN HEREON ARE NAVD88 DATUM DETERMINED BY RIK GPS OBSERVATION USING NGS GCOO 12A.
 T&M: FINISHED FLOOR (SW ENTRANCE) OF #600 N 93 STREET
 ELEVATION = 1200.58'(TILE)

PROJECT TEAM:

- | | |
|---|---|
| OWNER
ST. TIMOTHY'S LUTHERAN CHURCH
510 NORTH 93RD STREET
OMAHA, NE 68131 | CIVIL ENGINEER
EHRHART GRIFFIN & ASSOCIATES
3552 FARNHAM STREET
OMAHA, NE 68131 |
| OWNER'S REP
DANA MESSERSCHMIDT
402-619-0460
mehongor109@gmail.com | LANDSCAPE ARCHITECT
VRED
1111 NORTH 13TH STREET
OMAHA, NE 68102 |
| | ELECTRICAL ENGINEER
ALVINE ENGINEERING
1201 CASS STREET
OMAHA, NE 68102 |

COORDINATING PROFESSIONAL

EHRHART GRIFFIN & ASSOCIATES	
I HEREBY CERTIFY THAT THIS ENGINEERING DOCUMENT WAS PREPARED BY ME OR UNDER MY DIRECT PERSONAL SUPERVISION AND THAT I AM A DAILY LICENSED PROFESSIONAL ENGINEER UNDER THE LAWS OF THE STATE OF NEBRASKA.	
DANIEL DOLEZAL	
SIGNATURE	DATE
PAGES OR SHEETS COVERED BY THIS SEAL: SHEETS C1.0, C1.1, C1.2, C2.1, C2.2, C3.1, C3.2, C4.1-C4.2, C5.1-C5.3, C6.1, C7.1-C7.5, C8.1 MY RENEWAL DATE IS DECEMBER 31, 2025	

	EHRHART GRIFFIN & ASSOCIATES	<ul style="list-style-type: none"> • ENGINEERING • PLANNING • CONSTRUCTION MANAGEMENT • LAND SURVEYING
	3552 FARNHAM STREET OMAHA, NEBRASKA 68131 PHONE: 402-551-0631 FAX: 402-551-6540	

Table with columns: NO., DESCRIPTION, DATE, BY. Contains revision entries.

EHRHART GRIFFIN & ASSOCIATES

3552 Farnam Street Omaha, Nebraska 68131 402 / 551-0631

- ENGINEERING
PLANNING
LAND SURVEYING

SITE TOPOGRAPHIC SURVEY
ST. TIMOTHY'S LUTHERAN CHURCH
510 N. 93RD STREET
OMAHA, NEBRASKA

DATE: 07-12-2024
DESIGNED BY: DJD

DRAWN BY: JRB
CHECKED BY: DJD

SHEET NO.
CO.1

PROJECT NO. EGA221022S

Table with columns: NO., DESCRIPTION, DATE, BY. Contains revision entries.

EHRHART GRIFFIN & ASSOCIATES

3552 Farnam Street Omaha, Nebraska 68131 402 / 551-0631

- ENGINEERING
PLANNING
LAND SURVEYING

- ENGINEERING
PLANNING
LAND SURVEYING

ST. TIMOTHY'S LUTHERAN CHURCH TOPOGRAPHIC SURVEY
510 N. 93RD STREET
OMAHA, NEBRASKA

DATE: 7/12/2024

DESIGNED BY: DJD
DRAWN BY: JRB
CHECKED BY: DJD
CREW: RSN



SHEET NO. 1 OF 1

Surveyed by Timothy L. Cramer

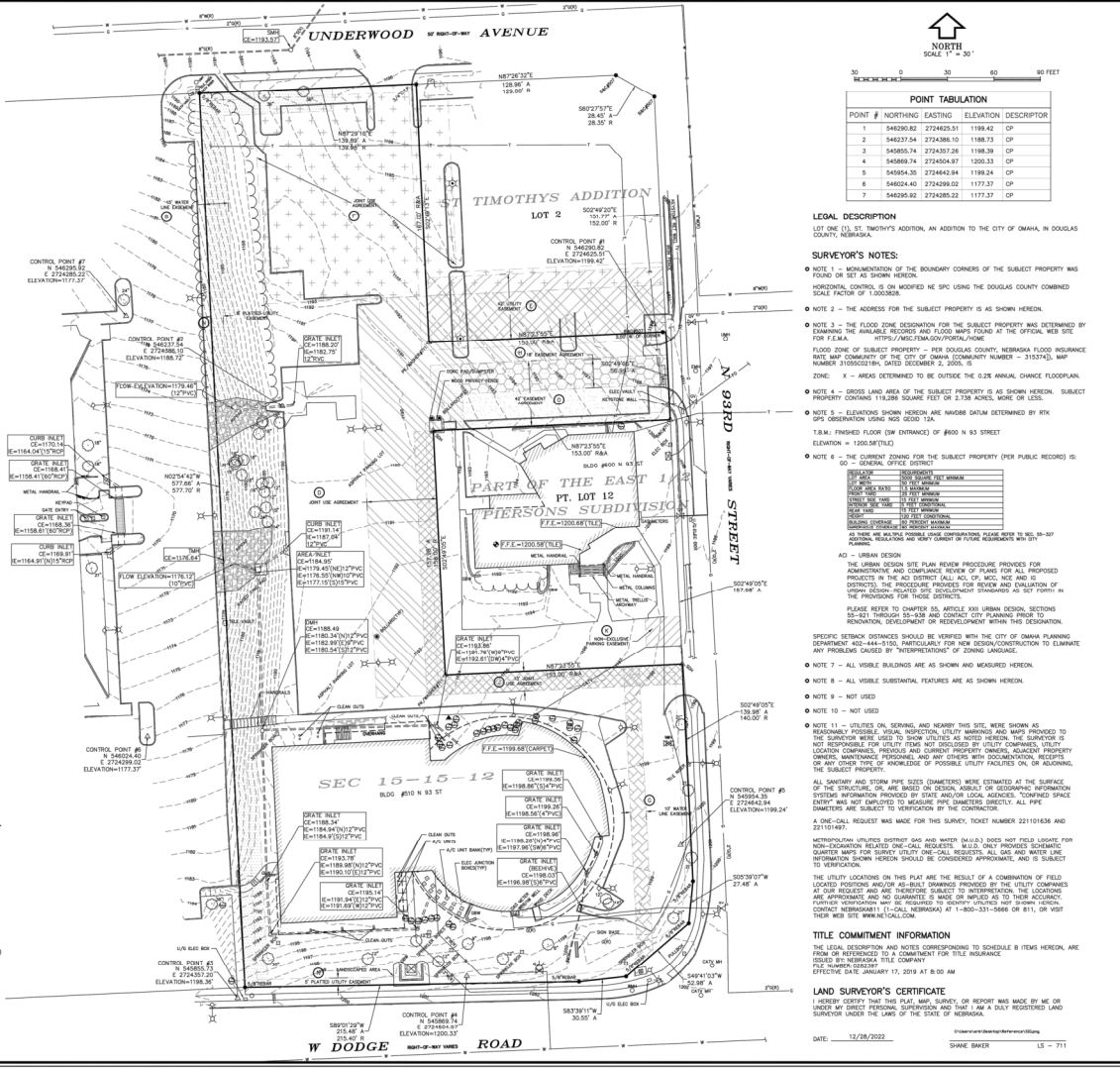


- MISCELLANEOUS NOTES:
1) A CERTIFICATE OF TITLE INFORMATION WAS SUPPLIED TO THE SURVEYOR...
2) SURVEYOR'S REPORT/LETTER WAS NOT PROVIDED TO THE SURVEYOR...
3) A ZONING REPORT/LETTER WAS NOT PROVIDED TO THE SURVEYOR...

- NOTES CORRESPONDING TO SCHEDULE B ITEMS
1) GRANT OF EASEMENT FOR WATER LINE RECORDS...
2) TERMS AND CONDITIONS OF JOINT USE AGREEMENT...
3) TERMS AND CONDITIONS OF JOINT USE AGREEMENT...
4) TERMS AND CONDITIONS OF JOINT USE AGREEMENT...
5) TERMS AND CONDITIONS OF JOINT USE AGREEMENT...
6) TERMS AND CONDITIONS OF JOINT USE AGREEMENT...
7) GRANT OF NON-EXCLUSIVE PAVEMENT EASEMENT...
8) EASEMENTS AND RESTRICTIONS RESERVED...
9) TERMS AND CONDITIONS OF EASEMENT AGREEMENT...

Table with columns: SYMBOL NAME, MARKS. Lists symbols for utility lines, easements, etc.

- LEGEND
1. FOUND SURVEY POINT
2. TEMPORARY CONTROL POINT
3. BENCH MARK
4. CRIMED TOP PIPE
5. OPEN TOP PIPE
6. CRIMED 'X' IN CONCRETE
7. PLAT DISTANCE
8. ACTUAL DISTANCE
9. BOUNDARY SURFACE
10. FINISHED FLOOR ELEVATION
11. FINISHED ELEVATION
12. UTILITY LINES OVERHEAD (SOLID)
13. UTILITY LINES UNDER (DASHED)
14. UTILITY FEASIBLE AS NOTED
15. FENCES (TYPE NOTED)
16. SMALL SIGN
17. FENCES (EYES NOTED)
18. LANDSCAPING AREA
19. TREE LINE
20. CONTIGUOUS TREE
21. DISCONTIGUOUS TREE
22. FIBER OPTIC CABLE
23. CABLE TELEVISION
24. GRANITE BLOCK WALL



POINT TABULATION table with columns: POINT #, NORTHING, EASTING, ELEVATION, DESCRIPTION.

LEGAL DESCRIPTION
LOT ONE (21), ST. TIMOTHY'S ADDITION, AN ADDITION TO THE CITY OF OMAHA, IN DOUGLAS COUNTY, NEBRASKA

SURVEYOR'S NOTES:
NOTE 1 - MONUMENTATION OF THE BOUNDARY CORNERS OF THE SUBJECT PROPERTY WAS FOUND ON SET AS SHOWN HEREON.
NOTE 2 - THE ADDRESS FOR THE SUBJECT PROPERTY IS AS SHOWN HEREON.
NOTE 3 - THE FLOOD ZONE DESIGNATION FOR THE SUBJECT PROPERTY WAS DETERMINED BY EXAMINING THE AVAILABLE RECORDS AND FLOOD MAPS FOUND AT THE OFFICIAL WEB SITE...

Table with columns: NO., DESCRIPTION, DATE, BY. Lists notes 4 through 11.

SPECIFIC BENCHMARKS SHOULD BE VERIFIED WITH THE CITY OF OMAHA PLANNING DEPARTMENT...

- NOTE 7 - ALL VISIBLE BUILDINGS ARE AS SHOWN AND MEASURED HEREON.
NOTE 8 - ALL VISIBLE SUBSTANTIAL FEATURES ARE AS SHOWN HEREON.
NOTE 9 - NOT USED
NOTE 10 - NOT USED
NOTE 11 - UTILITIES ON, NEARBY, AND NEARBY THIS SITE, WERE SHOWN AS REASONABLY PROBABLE VISIBLE, NEARBY, UTILITY MARKINGS AND WERE PROVIDED TO THE SURVEYOR...

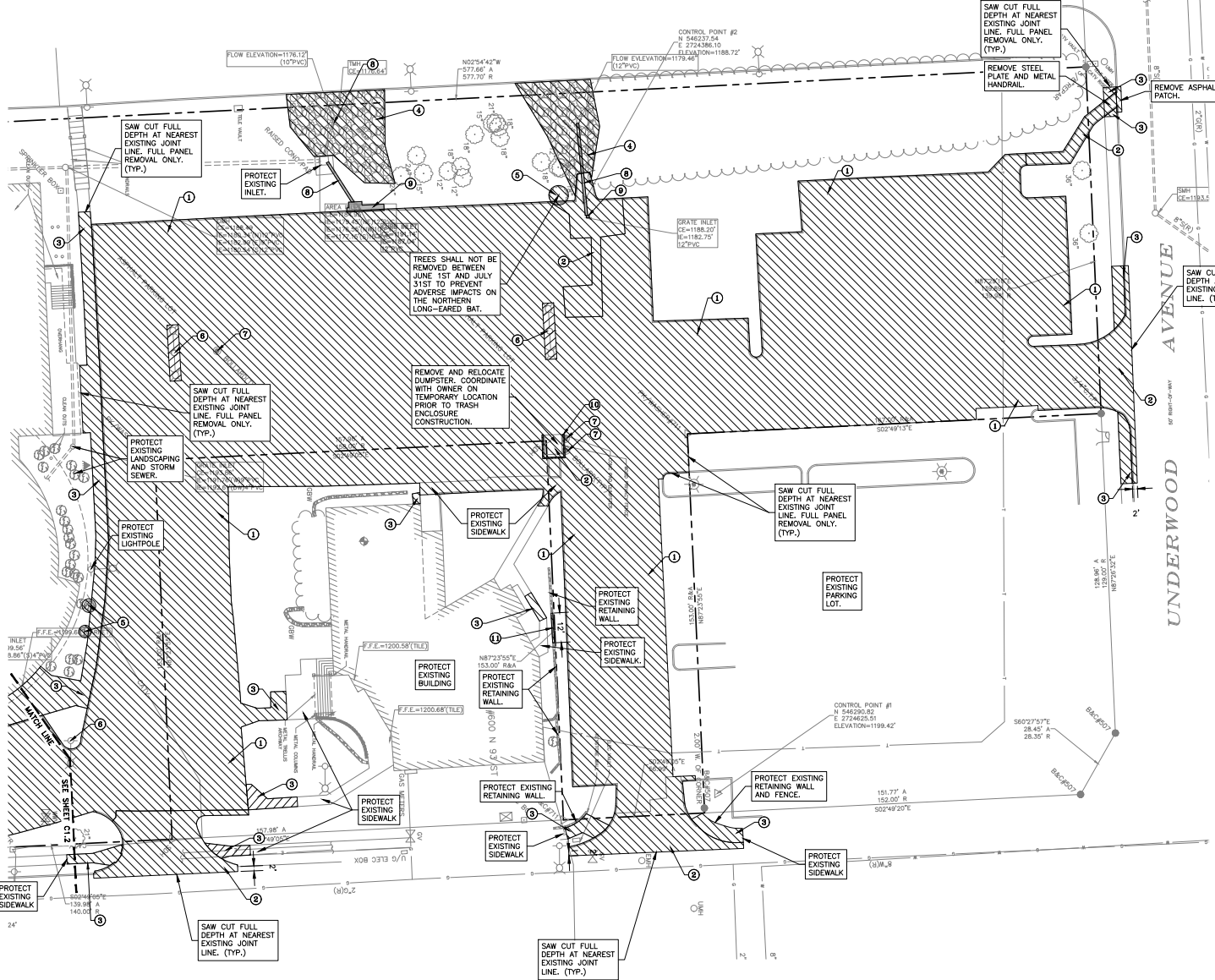
A ONE-CALL REQUEST WAS MADE FOR THIS SURVEY, TICKET NUMBER 221101636 AND 221101647.
METROPOLITAN UTILITIES DISTRICT AND WATER (M.U.D.) DOES NOT FIELD LOCATE FOR INFORMATION RELATED TO THESE REQUESTS. BELLS ONLY PROVIDES QUARTER MILE SURVEY UTILITY ONE-CALL REQUESTS. ALL GAS AND WATER LINE INFORMATION SHOWN HEREON SHOULD BE CONSIDERED APPROXIMATE AND IS SUBJECT TO VERIFICATION.

TITLE COMMITMENT INFORMATION
THE LEGAL DESCRIPTION AND NOTES CORRESPONDING TO SCHEDULE B ITEMS HEREOF, ARE FOR INFORMATION REFERENCED TO A COMMITMENT FOR TITLE INSURANCE ISSUED BY NEBRASKA TITLE COMPANY...

LAND SURVEYOR'S CERTIFICATE
I, SURVEYOR, HAVE MADE THIS SURVEY REPORT AS REQUIRED BY ME OR UNDER MY DIRECT PERSONAL SUPERVISION AND THAT I AM A DAILY REGISTERED LAND SURVEYOR UNDER THE LAWS OF THE STATE OF NEBRASKA.

DATE: 12/28/2022 SHANE BAKER LS - 711

AS2
37



NOTE:
UNDERGROUND UTILITY LOCATIONS SHOWN ARE FROM INFORMATION PROVIDED TO US FROM UTILITY COMPANIES. UTILITY COMPANIES MAKE NO WARRANTIES OR GUARANTEES REGARDING THE ACCURACY OF THE INFORMATION CONTAINED IN THEIR DOCUMENTS AND PROVIDES IT ONLY AS GENERAL INFORMATION TO THE RECEIVER. FOR SPECIFIC LOCATIONS DURING CONSTRUCTION CALL DIGGERS HOTLINE 1-800-341-5666 (STATEWIDE) PRIOR TO DIGGING.

REMOVAL LEGEND

- 1 - REMOVE ITEMS
- 1 - REMOVE ASPHALT PAVEMENT AND CURB AND GUTTER
- 2 - REMOVE CONCRETE PAVEMENT AND CURB AND GUTTER
- 3 - REMOVE SIDEWALK PAVEMENT (TYPICAL)
- 4 - REMOVE STONE RIP RAP
- 5 - REMOVE TREE
- 6 - REMOVE LIGHT POLES AND BASES IN THEIR ENTIRETY
- 7 - REMOVE BOLLARDS
- 8 - REMOVE STORM PIPE
- 9 - REMOVE INLET
- 10 - REMOVE WOOD PRIVACY FENCE
- 11 - REMOVE RETAINING WALL

SURVEY LEGEND

- △ - FOUND SURVEY POINT
- △ - TEMPORARY CONTROL POINT (1" LANDSCAPE SPIRE) (U.A.G.)
- C.T.P. - CHANGED TOP IRM
- O.T.P. - OPEN TOP PIPE
- E.G.P. - EXISTING GROUND PROFILE
- P - PLAT DISTANCE
- A - ACTUAL DISTANCE
- R - RECORDED DISTANCE
- C - CORRELATED DISTANCE
- U.A.G. - UNLESS NOTED OTHERWISE
- T.A.M. - TEMPORARY PRODUCT BENCH MARK
- F.F.E. - FINISHED FLOOR ELEVATION
- U.L. - UTILITY LINES OVERHEAD (SOLID)
- U.L. - UTILITY LINES BORED (SHOWN)
- U.L. - UTILITY FEATURES AS NOTED
- SMALL SIGN
- FENCES (ONES NOTED)
- LANDSCAPING AREA
- DECIDUOUS TREE
- CONIFEROUS TREE
- SHRUB/BUSH
- OVERHEAD ELECTRIC
- UNDERGROUND ELECTRIC
- ELECTRIC MANHOLE
- POWER POLE
- OUT WALK
- LAMP POLE
- TRAMPOLINE
- TRAFFIC SIGNAL
- UNDERGROUND TELEPHONE
- OVERHEAD TELEPHONE
- UNDERGROUND TELEPHONE
- TRIA - TELEPHONE MANHOLE
- FO - FIBER OPTIC CABLE
- TV - CABLE TELEVISION
- S.M. - MANHOLE MANHOLE
- S - SANITARY SEWER
- S.M. - STORM SEWER MANHOLE
- C.E. - CEMENT ELEVATION (NORTH RM U.A.G.)
- F.L. - FLOOR LINE (NOT NOTED)
- W.M. - WATER MANHOLE
- W.V. - WATER VALVE
- W.S. - WATER SHUTOFF
- P.V. - POT HOLE VALVE
- G.V. - GAS VALVE
- G.M. - GAS MANHOLE

REMOVAL NOTES:

1. CONTRACTOR SHALL MAKE ALL REMOVALS AS NECESSARY TO COMPLETE THE WORK. REMOVALS SHOWN ARE FOR THE CONTRACTOR'S CONVENIENCE ONLY.
2. PROTECT, BY WHATEVER MEANS REQUIRED, ALL MAILBOXES, FENCES, SIGNS, STRUCTURES, DRIVES, SIDEWALKS, STREETS, POLES, BUSHES, TREES, ETC., WHICH ARE NOT DESIGNATED FOR REMOVAL OR ARE OUTSIDE THE CONSTRUCTION LIMITS. THE CONTRACTOR SHALL KEEP ALL VEHICLES, EQUIPMENT, MATERIALS, AND CONSTRUCTION ACTIVITIES OUTSIDE THE LIMITS OF THE CANOPIES OF ALL TREES.
3. THE LOCATIONS OF ALL AERIAL AND UNDERGROUND UTILITY FACILITIES ARE APPROXIMATE OR MAY NOT BE INDICATED IN THESE PLANS. UNDERGROUND FACILITIES, WHETHER INDICATED OR NOT, WILL BE LOCATED AND FLAGGED BY THE UTILITIES AT THE REQUEST OF THE CONTRACTOR. NO EXCAVATION WILL BE PERMITTED IN THE AREA UNTIL ALL SUCH UNDERGROUND UTILITY FACILITIES HAVE BEEN LOCATED AND IDENTIFIED TO THE SATISFACTION OF ALL PARTIES AND THEN ONLY WITH EXTREME CARE TO AVOID ANY POSSIBILITY OF DAMAGE TO THE UTILITY FACILITY. IT SHALL BE THE RESPONSIBILITY OF THE CONTRACTOR TO PROTECT ALL EXISTING UTILITIES, PAVEMENT, AND OTHER IMPROVEMENTS, ANY DAMAGE TO EXISTING UTILITIES AND/OR PAVED STREETS CAUSED BY CONSTRUCTION OPERATIONS SHALL BE REPAIRED AT THE CONTRACTOR'S EXPENSE.

PROJECT NO.
EGA221022C

NO.	DESCRIPTION	DATE	BY

REVISIONS

EHRHART
GRIFFIN &
ASSOCIATES

3552 Farnam Street
Omaha, Nebraska 68131
402 / 551-0631

- ENGINEERING
- PLANNING
- LAND SURVEYING

SITE REMOVAL PLAN

ST. TIMOTHY'S LUTHERAN CHURCH
 510 N. 93RD STREET
 OMAHA, NEBRASKA

DATE: 07-12-2024
DESIGNED BY: DJD
DRAWN BY: JRB
CHECKED BY: DJD



SHEET NO.
C1.1

S:\221022C - St. Timothy's Lutheran Church\ENGINEERING\ESheets\Removal_221022C.dwg, 1/8/2024 10:15:02 AM

NO.	DESCRIPTION	DATE	BY

**EHRHART
GRIFFIN &
ASSOCIATES**

3552 Farnam Street
Omaha, Nebraska 68131
402 / 551-0631

- ENGINEERING
- PLANNING
- LAND SURVEYING

SITE REMOVAL PLAN
ST. TIMOTHY'S LUTHERAN CHURCH
510 N. 93RD STREET
OMAHA, NEBRASKA

DATE: 07-12-2024
DESIGNED BY: DJD
DRAWN BY: JRB
CHECKED BY: DJD



SHEET NO.
C1.2



0 20 40 60 FEET



NOTE:
UNDERGROUND UTILITY LOCATIONS SHOWN ARE FROM INFORMATION PROVIDED TO US FROM UTILITY COMPANIES. UTILITY COMPANIES MAKE NO WARRANTIES OR GUARANTEES REGARDING THE ACCURACY OF THE INFORMATION CONTAINED IN THEIR DOCUMENTS AND PROVIDES IT ONLY AS GENERAL INFORMATION TO THE RECEIVER. FOR SPECIFIC LOCATIONS DURING CONSTRUCTION CALL "TRIGGERS HOTLINE" 1-800-331-5666 (STATEWIDE) PRIOR TO DIGGING.

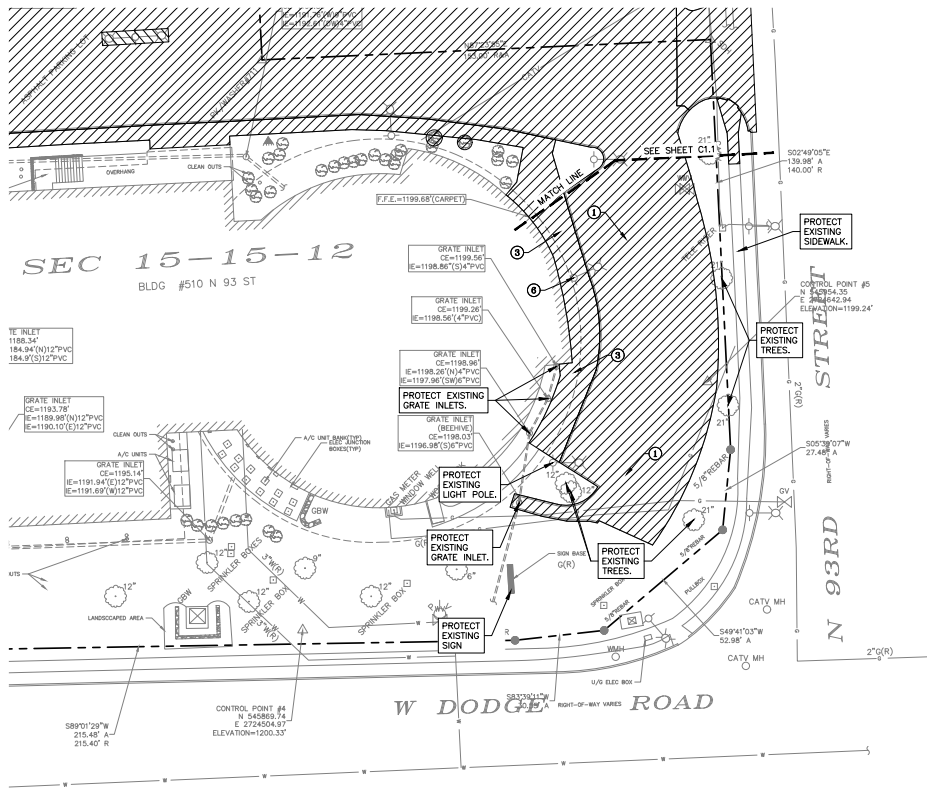
REMOVAL LEGEND



- ① - REMOVE ASPHALT PAVEMENT AND CURB AND GUTTER
- ② - REMOVE CONCRETE PAVEMENT AND CURB AND GUTTER
- ③ - REMOVE SIDEWALK FULL PANEL (TYPICAL)
- ④ - REMOVE STONE RIP RAP
- ⑤ - REMOVE TREE
- ⑥ - REMOVE LIGHT POLES AND BASES IN THEIR ENTIRETY
- ⑦ - REMOVE BOLLARDS
- ⑧ - REMOVE LIGHT POLES
- ⑨ - REMOVE STORM PIPE
- ⑩ - REMOVE INLET
- ⑪ - REMOVE WOOD PRIVACY FENCE
- ⑫ - REMOVE RETAINING WALL

SURVEY LEGEND

- | | | |
|---------------------------------------|--------------------------|---------------------------------------|
| △ - SET 5/8" IRON W/ODP (U.A.O.) | — PIPES (TYPE NOTED) | ○ - OVERHEAD TELEPHONE |
| △ - FOUND SURVEY POINT | — SMALL SIGN | ○ - UNDERGROUND TELEPHONE |
| △ - TEMPORARY CONTROL POINT (T.C.P.) | — FENCES (TYPES NOTED) | ○ - TELEPHONE MANHOLE |
| △ - 1" X 1" LANDSCAPE SPIC (U.A.O.) | — LANDSCAPE AREA | ○ - FIBER OPTIC CABLE |
| C.T.P. - CROWN TOP PIPE | — TREE LINE | ○ - JARL TELEPHONE |
| S.T.P. - SIDE TOP PIPE | — CROCODUS TREE | ○ - SANITARY MANHOLE |
| — CURBLED "X" IN CONCRETE | — CONIFEROUS TREE | ○ - SANITARY SEWER |
| — FLAT DISTANCE | — SHRUB/BURCH | ○ - STORM SEWER MANHOLE |
| — ACTUAL DISTANCE | — UNDERGROUND ELECTRIC | ○ - COVER ELEVATION (NORTH RM U.A.O.) |
| — RECORDED DISTANCE | — ELECTRIC MANHOLE | ○ - INVERT ELEVATION |
| U.A.O. - UNLESS NOTED OTHERWISE | — POWER POLE | ○ - FLOW LINE (NOT INVERT) |
| T.B.M. - TEMPORARY PROJECT BENCH MARK | — SPOT ELEVATION | ○ - WATER MANHOLE |
| — FINISHED FLOOR ELEVATION | — UNPAV. DRIVE | ○ - WATER VALVE |
| — UNDEVELOPED ELEVATION | — LAMP POLE | ○ - FIRE HYDRANT |
| — UTILITY LINES (SHOWN SOLID) | — TRAFFIC SIGNAL | ○ - WATER SALT/OTF |
| — UTILITY LINES BURIED (DASHED) | — TRAFFIC SIGNAL | ○ - POET INDICATOR VALVE |
| ○ - UTILITY FEATURE AS NOTED | — PEDESTRIAN WALK SIGNAL | ○ - GAS VALVE |
| | | ○ - GAS MANHOLE |



2724599.02
Q1=1177.37

CONTROL POINT #2
N 546237.54
E 2724596.10
ELEVATION=1188.72'

CONTROL POINT #1
N 546230.82
E 2724625.51
ELEVATION=1199.42'



20 0 20 40 60 FEET



NOTE:
UNDERGROUND UTILITY LOCATIONS SHOWN ARE FROM INFORMATION PROVIDED TO US FROM UTILITY COMPANIES. UTILITY COMPANIES MAKE NO WARRANTIES OR GUARANTEES REGARDING THE ACCURACY OF THE INFORMATION CONTAINED IN THEIR DOCUMENTS AND PROVIDES IT ONLY AS GENERAL INFORMATION TO THE RECEIVER. FOR SPECIFIC LOCATIONS DURING CONSTRUCTION CALL "DODGERS HOTLINE" 1-800-331-5666 (STATEWIDE) PRIOR TO DIGGING.

LEGEND

- - - PROPERTY LINE
- - - PROPOSED INTEGRAL CURB, SEE (C6.1)
- - - PROPOSED 6" P.C.C. PAVEMENT WITH INTEGRAL CURB AND GUTTER, SEE (C6.1) (C6.2) (C6.3)
- - - PROPOSED 6" P.C.C. PAVEMENT WITH WWF, SEE (C6.1)
- - - PROPOSED 9" P.C.C. PAVEMENT, SEE (C6.1)
- - - PROPOSED 5" P.C.C. SIDEWALK, SEE (C6.1)
- - - PROPOSED 5" P.C.C. PLAZA SIDEWALK, SEE LANDSCAPE PLAN AND (C6.1)
- - - PROPOSED CURB INLET
- - - PROPOSED GRATE INLET
- - - PROPOSED AREA INLET
- - - PROPOSED STORM MANHOLE
- - - PROPOSED FIRST DEFENSE MANHOLE
- - - PROPOSED SEATING WALL, SEE LANDSCAPE PLANS

LAYOUT NOTES:

1. CONTRACTOR SHALL CONTACT EHRHART GRIFFIN & ASSOCIATES (402) 551-0631 FOR COORDINATE FILE FOR CONSTRUCTION STAKING. IT IS THE CONTRACTORS RESPONSIBILITY TO VERIFY ALL PROPERTY LINES AND DIMENSIONS BEFORE BEGINNING CONSTRUCTION OF ANY IMPROVEMENTS. CONTRACTOR SHALL VERIFY THAT BUILDING SETBACK DIMENSIONS MEET ALL APPLICABLE LOCAL AND STATE BUILDING AND FIRE CODES.
2. PROVIDE EXPANSION JOINTS AT ALL LOCATIONS WHERE PAVEMENT ABUTS BUILDING AND EXISTING PAVEMENT.
3. THE CONTRACTOR SHALL BE REQUIRED TO INSTALL CITY OF OMAHA APPROVED CAST IRON DETECTABLE WARNING PANELS FOR WHEELCHAIR RAMP INSERTS ALONG WITH 3/8" INCH EXPANSION JOINT MATERIAL. JOINTS SHALL BE SEALED WITH A HOT APPLIED TYPE 2 SEALANT OR A POLYURETHANE, SILICONE, OR BITUMASTIC LIQUID MATERIAL MEETING ASTM D5883.
4. ALL PROPOSED LIGHTS SHALL HAVE DOWNWARD-FACING, FULL CUT-OFF LENSES TO PREVENT ADVERSE IMPACTS TO THE NORTHERN LONG-EARED BAT.
5. COORDINATE PLAZA AREA DETAILS WITH LANDSCAPE PLANS.

PROJECT NO.
EGA221022C

REVISIONS	NO.	DESCRIPTION	DATE	BY

EHRHART
GRIFFIN &
ASSOCIATES

3552 Farnam Street
Omaha, Nebraska 68131
402 / 551-0631

- ENGINEERING
- PLANNING
- LAND SURVEYING

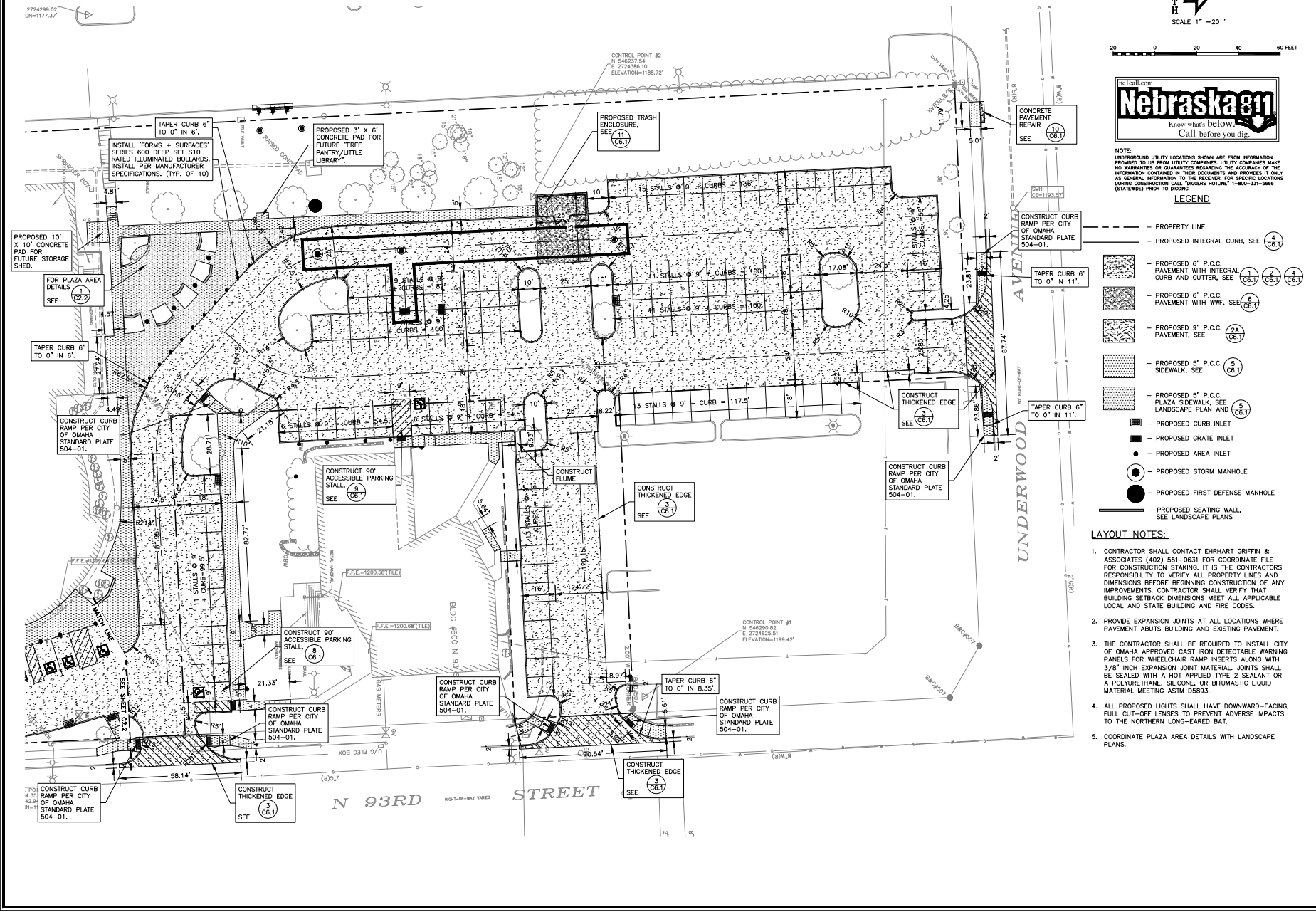
SITE LAYOUT PLAN

 ST. TIMOTHY'S LUTHERAN CHURCH
 510 N. 93RD STREET
 OMAHA, NEBRASKA

DATE: 07-12-2024
DESIGNED BY: DJD
DRAWN BY: JRB
CHECKED BY: DJD



SHEET NO.
C2.1



S:\221022C - St Timothy's Lutheran Church\ENGINEERING\Sheets\Layout_221022C.dwg, 11/20/24 10:15:18 AM

NO.	DESCRIPTION	DATE	BY

**EHRHART
GRIFFIN &
ASSOCIATES**

3552 Farnam Street
Omaha, Nebraska 68131
402 / 551-0631

- ENGINEERING
- PLANNING
- LAND SURVEYING

SITE LAYOUT PLAN
ST. TIMOTHY'S LUTHERAN CHURCH
510 N. 93RD STREET
OMAHA, NEBRASKA

DATE: 07-12-2024
DESIGNED BY: DJD
DRAWN BY: JRB
CHECKED BY: DJD



SHEET NO.
C2.2



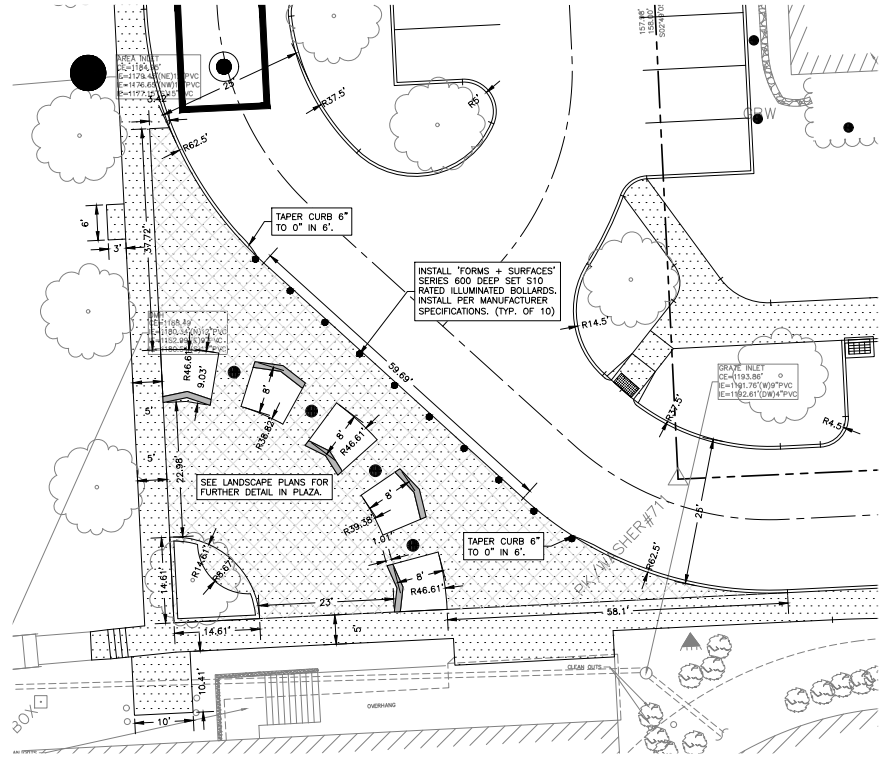
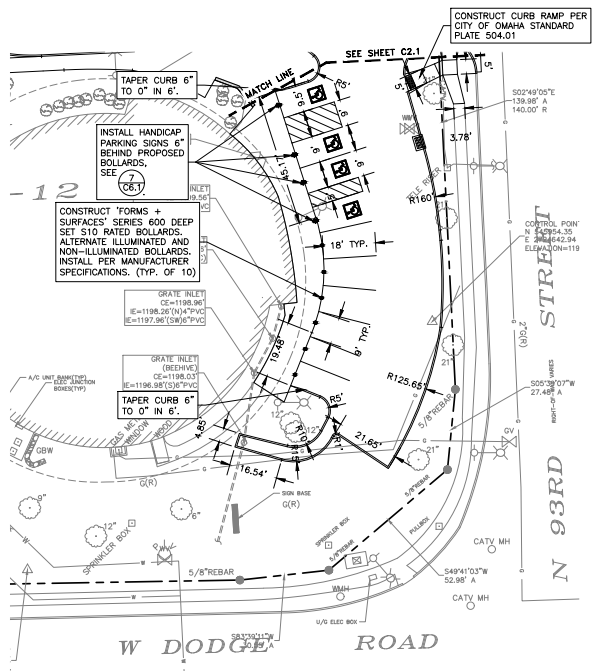
SCALE 1" = 20'



NOTE:
UNDERGROUND UTILITY LOCATIONS SHOWN ARE FROM INFORMATION PROVIDED TO US FROM UTILITY COMPANIES. UTILITY EMPLOYEES MAKE NO WARRANTIES OR GUARANTEES REGARDING THE ACCURACY OF THE INFORMATION CONTAINED IN THESE DOCUMENTS AND PROVIDES IT ONLY AS GENERAL INFORMATION TO THE RECEIVER. FOR SPECIFIC LOCATIONS DURING CONSTRUCTION CALL "DIGGERS HOTLINE" 1-800-331-0666 (STATEWIDE) PRIOR TO DIGGING.

LEGEND

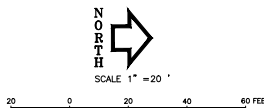
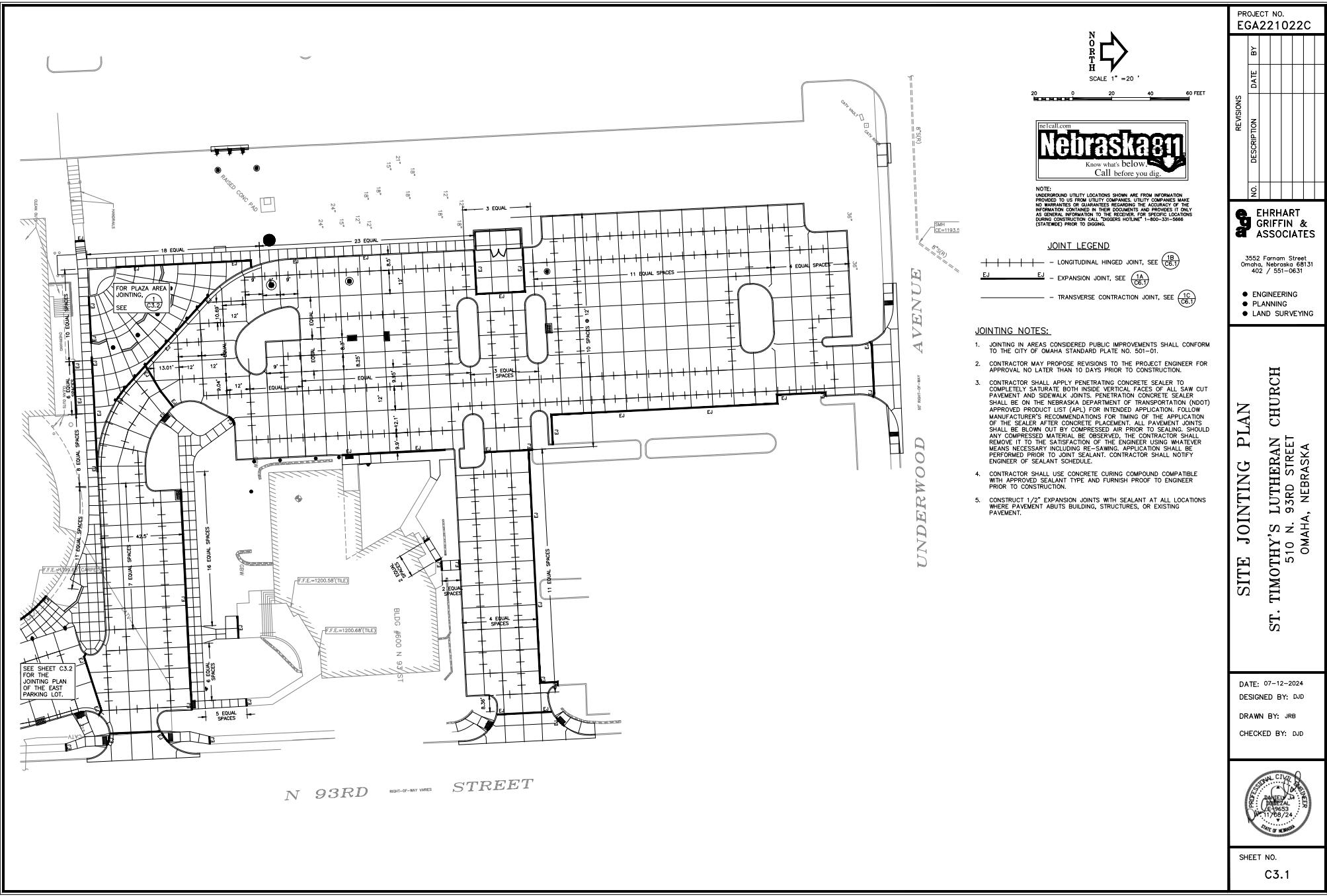
- - - - - PROPERTY LINE
- - - - - PROPOSED INTEGRAL CURB, SEE (4) (C8.1)
- - - - - PROPOSED 5" P.C.C. SIDEWALK, SEE (5) (C8.1)
- - - - - PROPOSED 5" P.C.C. PLAZA SIDEWALK, SEE LANDSCAPE PLANS AND (3) (C8.1)
- PROPOSED AREA INLET
- PROPOSED STORM MANHOLE
- PROPOSED FIRST DEFENSE MANHOLE
- - - - - PROPOSED SEATING WALL, SEE LANDSCAPE PLANS



1 PLAZA AREA DETAILS
1" = 10'

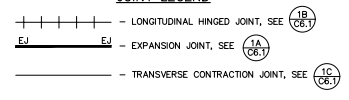


S:\221022C - St Timothy's Lutheran Church\ENGINEERING\Sheets\Layout_221022C.dwg, 11/8/2024 10:15:24 AM



NOTE:
UNDERGROUND UTILITY LOCATIONS SHOWN ARE FROM INFORMATION PROVIDED TO US FROM UTILITY COMPANIES. UTILITY COMPANIES MAKE NO WARRANTIES OR GUARANTEES REGARDING THE ACCURACY OF THE INFORMATION CONTAINED IN THEIR DOCUMENTS AND PROVIDES IT ONLY AS GENERAL INFORMATION TO THE RECEIVER. FOR SPECIFIC LOCATIONS DURING CONSTRUCTION CALL "DUGERS HOTLINE" 1-800-331-5666 (STATEWIDE) PRIOR TO DIGGING.

JOINT LEGEND



JOINTING NOTES:

1. JOINTING IN AREAS CONSIDERED PUBLIC IMPROVEMENTS SHALL CONFORM TO THE CITY OF OMAHA STANDARD PRACTICE NO. 501-01.
2. CONTRACTOR MAY PROPOSE REVISIONS TO THE PROJECT ENGINEER FOR APPROVAL NO LATER THAN 10 DAYS PRIOR TO CONSTRUCTION.
3. CONTRACTOR SHALL APPLY PENETRATING CONCRETE SEALER TO COMPLETELY SATURATE BOTH INSIDE VERTICAL FACES OF ALL SAW CUT PAVEMENT AND SIDEWALK JOINTS. PENETRATING CONCRETE SEALER SHALL BE ON THE NEBRASKA DEPARTMENT OF TRANSPORTATION (NDOT) APPROVED PRODUCT LIST (APL) FOR INTENDED APPLICATION. FOLLOW MANUFACTURER'S RECOMMENDATIONS FOR TIMING OF THE APPLICATION OF THE SEALER AFTER CONCRETE PLACEMENT. ALL PAVEMENT JOINTS SHALL BE BLOWN OUT BY COMPRESSED AIR PRIOR TO SEALING. SHOULD ANY COMPRESSED MATERIAL BE OBSERVED, THE CONTRACTOR SHALL REMOVE IT TO THE SATISFACTION OF THE ENGINEER USING WHATEVER MEANS NECESSARY INCLUDING RE-SAWING. APPLICATION SHALL BE PERFORMED PRIOR TO JOINT SEALANT. CONTRACTOR SHALL NOTIFY ENGINEER OF SEALANT SCHEDULE.
4. CONTRACTOR SHALL USE CONCRETE CURING COMPOUND COMPATIBLE WITH APPROVED SEALANT TYPE AND FURNISH PROOF TO ENGINEER PRIOR TO CONSTRUCTION.
5. CONSTRUCT 1/2" EXPANSION JOINTS WITH SEALANT AT ALL LOCATIONS WHERE PAVEMENT ABUTS BUILDING, STRUCTURES, OR EXISTING PAVEMENT.

PROJECT NO.
EGA221022C

NO.	DESCRIPTION	DATE	BY

EHRHART GRIFFIN & ASSOCIATES

3552 Farnam Street
Omaha, Nebraska 68131
402 / 551-0631

- ENGINEERING
- PLANNING
- LAND SURVEYING

SITE JOINTING PLAN

ST. TIMOTHY'S LUTHERAN CHURCH
510 N. 93RD STREET
OMAHA, NEBRASKA

DATE: 07-12-2024
DESIGNED BY: DJD
DRAWN BY: JRB
CHECKED BY: DJD



SHEET NO.
C3.1

S:\221022C - St Timothy's Lutheran Church\ENGINEERING\Sheets\Jointing_221022C.dwg, 11/26/2024 10:15:32 AM

PROJECT NO.
EGA221022C

NO.	DESCRIPTION	DATE	BY

**EHRHART
GRIFFIN &
ASSOCIATES**

3552 Farnam Street
Omaha, Nebraska 68131
402 / 551-0631

- ENGINEERING
- PLANNING
- LAND SURVEYING

SITE JOINTING PLAN
ST. TIMOTHY'S LUTHERAN CHURCH
510 N. 93RD STREET
OMAHA, NEBRASKA

DATE: 07-12-2024
DESIGNED BY: DJD
DRAWN BY: JRB
CHECKED BY: DJD

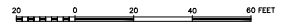


SHEET NO.
C3.2



NORTH

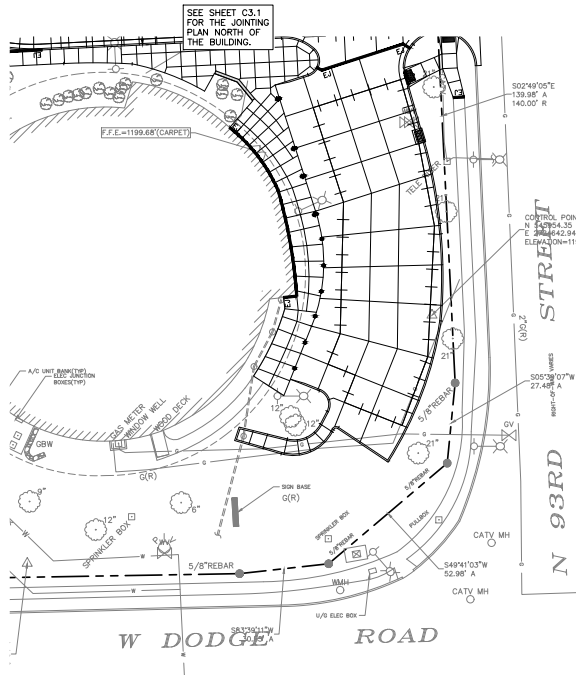
SCALE 1" = 20'



NOTE:
UNDERGROUND UTILITY LOCATIONS SHOWN ARE FROM INFORMATION PROVIDED TO US FROM UTILITY COMPANIES. UTILITY COMPANIES MAKE NO WARRANTIES OR GUARANTEES REGARDING THE ACCURACY OF THE INFORMATION CONTAINED IN THEIR DOCUMENTS AND PROVIDES IT ONLY AS GENERAL INFORMATION TO THE RECEIVER. FOR SPECIFIC LOCATIONS DURING CONSTRUCTION CALL "DIGGERS HOTLINE" 1-800-331-5868 (STATEWIDE) PRIOR TO DIGGING.

JOINT LEGEND

- LONGITUDINAL HINGED JOINT, SEE 1R (C6.1)
- EXPANSION JOINT, SEE 1A (C6.1)
- TRANSVERSE CONTRACTION JOINT, SEE 1C (C6.1)

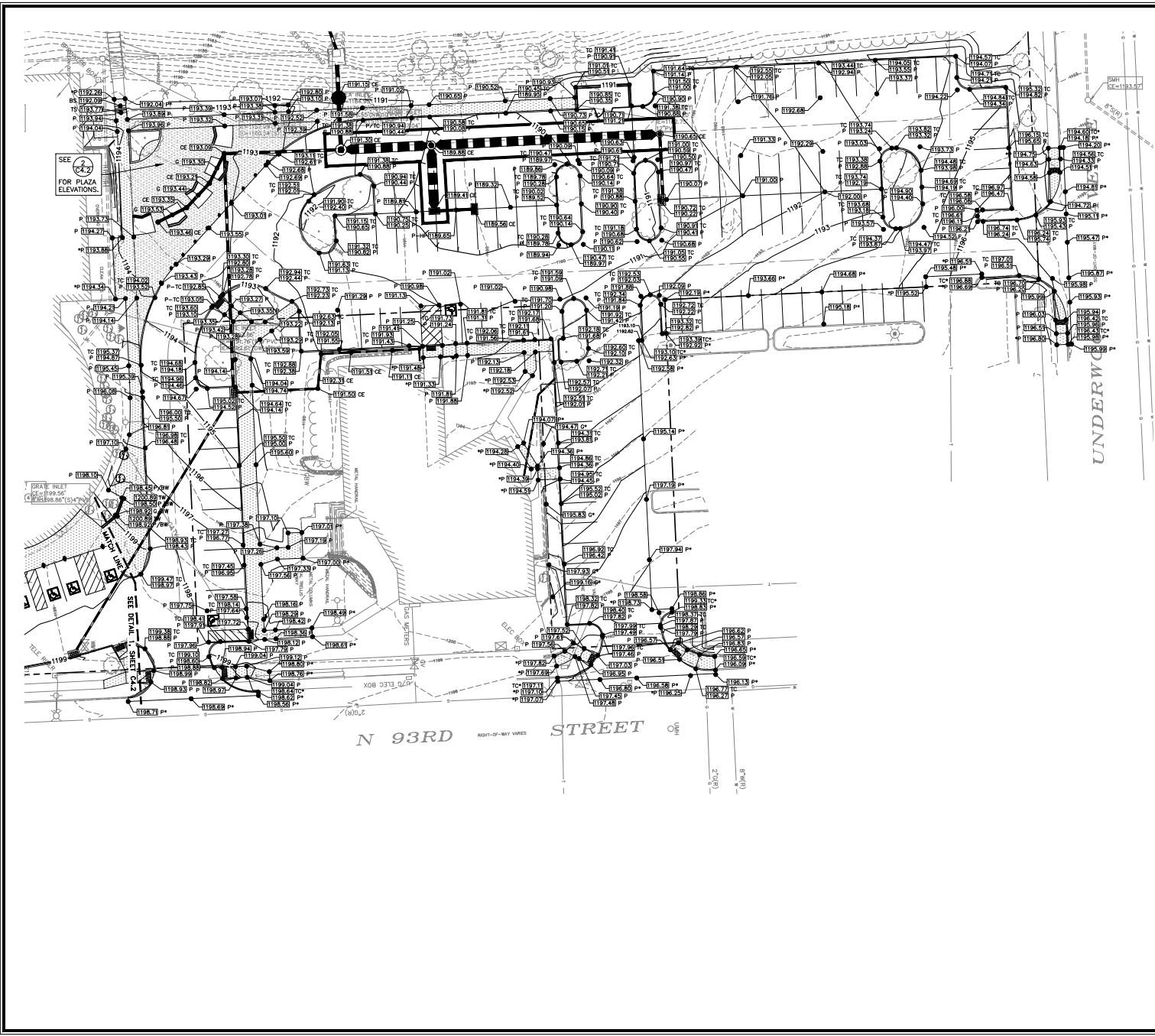


1 PLAZA AREA JOINTING PLAN
C3.2 1" = 10'



NORTH

S:\221022C - St. Timothy's Lutheran Church\ENGINEERING\Sheets\Building_221022C.dwg, 11/26/2024 10:15:34 AM



N
O
R
T
H

SCALE 1" = 20'

20 0 20 40 60 FEET

NOTE:
UNDERGROUND UTILITY LOCATIONS SHOWN ARE FROM INFORMATION PROVIDED TO US FROM UTILITY COMPANIES. UTILITY COMPANIES MAKE NO WARRANTIES OR GUARANTEES REGARDING THE ACCURACY OF THE INFORMATION CONTAINED IN THEIR DOCUMENTS AND PROVIDES IT ONLY AS GENERAL INFORMATION TO THE RECEIVER. FOR SPECIFIC LOCATIONS OBTAIN CONSTRUCTION CALL "DIGGERS HOTLINE" 1-800-331-5666 (STATEWIDE) PRIOR TO DIGGING.

- LEGEND**
- PROPERTY LINE
 - STORM SEWER PIPE
 - EXISTING CONTOUR
 - PROPOSED CONTOUR
 - G 1020.00 - PROPOSED SPOT ELEVATION
 - G - GRADE
 - TC - TOP OF CURB
 - P - PAVEMENT
 - TS - TOP OF STAIR
 - BS - BOTTOM OF STAIR
 - TW - TOP OF WALL
 - BW - BOTTOM OF WALL
 - CE - COVER ELEVATION
 - *
 - - EXISTING ELEVATION (FIELD VERIFY)

- GRADING NOTES:**
1. THE PROPOSED CONTOURS SHOWN REPRESENT TOP OF PAVEMENT IN PAVED AREAS AND FINISHED GRADE IN LANDSCAPED AREAS. GRADE SHALL GRADUALLY TAPER OVER SPOT ELEVATIONS IN GENTLE SWEEPING CURVES. (NO SHARP BREAK IN PLANE OF PAVING ALLOWED.)
 2. ELEVATIONS SHOWN ARE REFERENCED TO NAVD83 DATUM.
 3. EXISTING CONTOURS MAY VARY DUE TO GRADING BY OTHERS. CONTRACTOR SHALL PROVIDE EXCAVATING AND SUFFICIENT FILL TO ACHIEVE GRADES SHOWN AT NO ADDITIONAL COST TO OWNER.
 4. PROVIDE WIND AND WATER EROSION CONTROL AS REQUIRED BY OWNER AND CITY OF OMAHA. REMOVE MUD AND SILT FROM ADJACENT PUBLIC AND PRIVATE PROPERTY IMMEDIATELY AFTER SPILLAGE.
 5. VERIFY ELEVATIONS AT ALL OUTSIDE DOOR LOCATIONS WITH ARCHITECT BEFORE PAVING.
 6. THE CONTRACTOR SHALL CONTROL DUST AND WATER INDUCED EROSION CAUSED BY HIS OPERATIONS. THE CONTRACTOR SHALL MOISTEN ALL SURFACES AS REQUIRED TO PREVENT DUST FROM BEING A NUISANCE TO THE PUBLIC, NEIGHBORS, AND CONCURRENT PERFORMANCE OF OTHER WORK ON THE SITE. THE CONTRACTOR SHALL FURNISH ALL WATER, FEES, PERMITS, EQUIPMENT, AND LABOR NECESSARY TO CONTROL DUST AT NO ADDITIONAL COST TO THE OWNER. THE CONTRACTOR SHALL CONTROL WATER INDUCED EROSION RELATED TO HIS OPERATIONS UNTIL SUCH TIME AS EROSION CONTROL MEASURES HAVE BEEN INSTALLED.

PROJECT NO.
EGA221022C

NO.	DESCRIPTION	DATE	BY

EHRHART GRIFFIN & ASSOCIATES

3552 Farnam Street
Omaha, Nebraska 68131
402 / 551-0631

- ENGINEERING
- PLANNING
- LAND SURVEYING

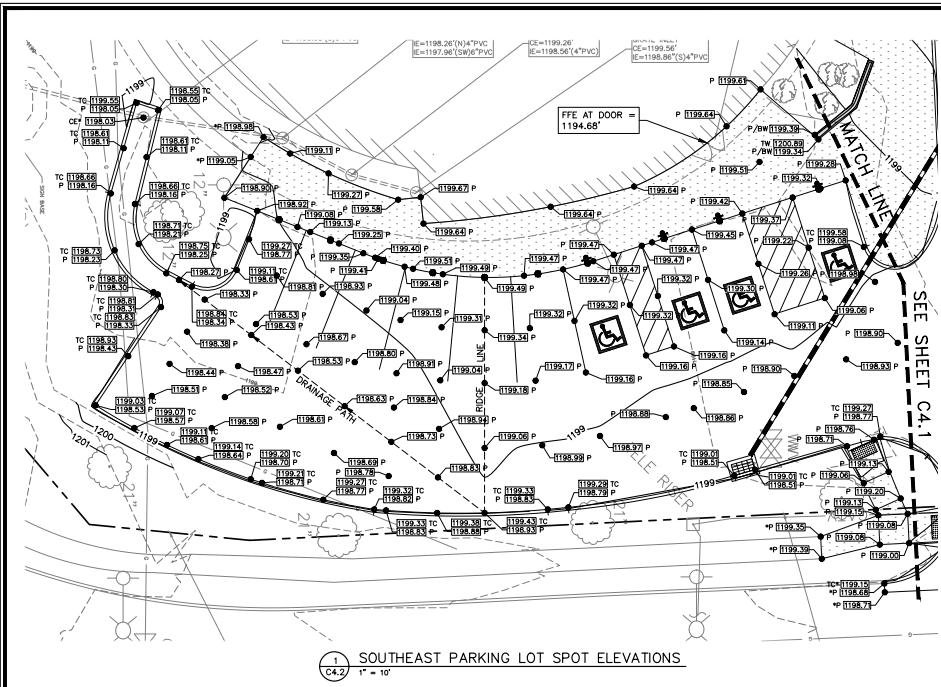
SITE GRADING PLAN
ST. TIMOTHY'S LUTHERAN CHURCH
510 N. 93RD STREET
OMAHA, NEBRASKA

DATE: 07-12-2024
DESIGNED BY: DJD
DRAWN BY: JRB
CHECKED BY: DJD

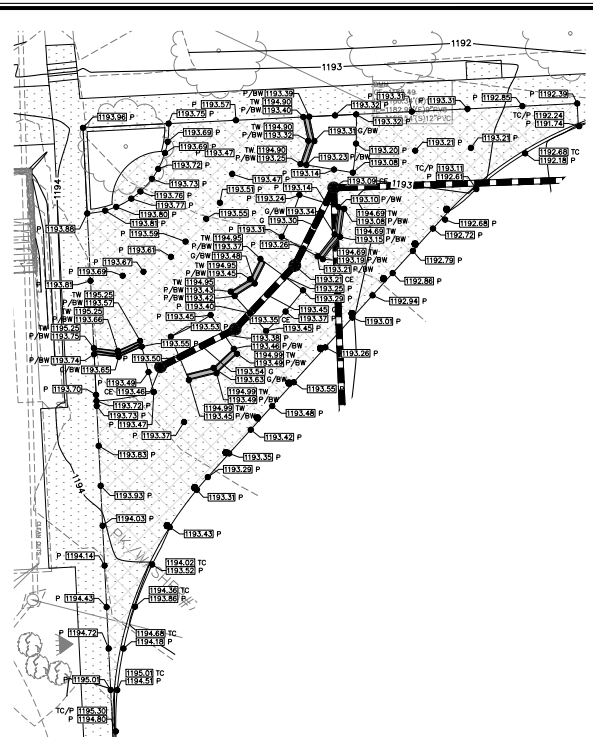


SHEET NO.
C4.1

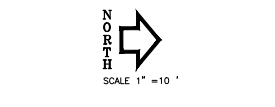
S:\21022C - St. Timothy's Lutheran Church\ENGINEERING\Sheets\Grading_221022C.dwg, 11/06/2024 10:15:44 AM



1 C4.2 SOUTHEAST PARKING LOT SPOT ELEVATIONS
1" = 10'



2 C4.2 NORTH PLAZA SPOT ELEVATIONS
1" = 10'



NOTE:
UNDERGROUND UTILITY LOCATIONS SHOWN ARE FROM INFORMATION PROVIDED TO US FROM UTILITY COMPANIES. UTILITY COMPANIES MAKE NO WARRANTIES OR GUARANTEES REGARDING THE ACCURACY OF THE INFORMATION CONTAINED IN THEIR DOCUMENTS AND PROVIDES IT ONLY AS GENERAL INFORMATION TO THE RECORD. FOR SPECIFIC LOCATIONS, OBTAIN CONSTRUCTION CALL TRENCH HOTLINE: 1-800-331-5666 (STATEWIDE) PRIOR TO DIGGING.

LEGEND

- PROPERTY LINE
- STORM SEWER PIPE
- EXISTING CONTOUR
- PROPOSED CONTOUR
- G 1192.00 --- PROPOSED SPOT ELEVATION
- G --- GRADE
- TC --- TOP OF CURB
- P --- PAVEMENT
- TW --- TOP OF WALL
- BW --- BOTTOM OF WALL
- CE --- COVER ELEVATION
- --- EXISTING ELEVATION (FIELD VERIFY)

PROJECT NO.
EGA221022C

REVISIONS	DATE	BY
DESCRIPTION		
NO.		

EHRHART GRIFFIN & ASSOCIATES

3552 Farnam Street
Omaha, Nebraska 68131
402 / 551-0631

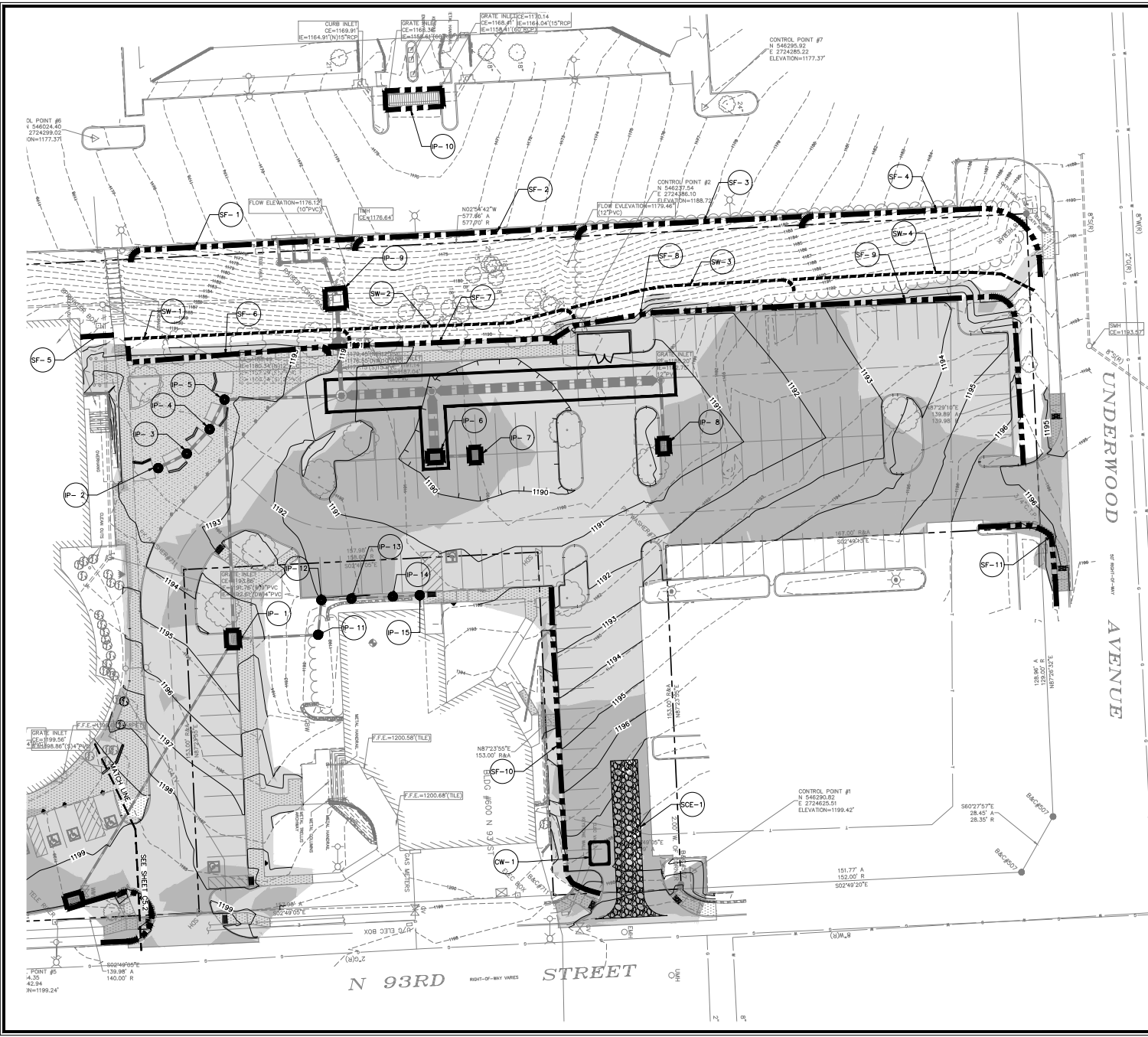
- ENGINEERING
- PLANNING
- LAND SURVEYING

SPOT ELEVATION ENLARGEMENTS
ST. TIMOTHY'S LUTHERAN CHURCH
510 N. 93RD STREET
OMAHA, NEBRASKA

DATE: 07-12-2024
DESIGNED BY: DJD
DRAWN BY: JRB
CHECKED BY: DJD



SHEET NO.
C4.2



NOTE:
 UNDERGROUND UTILITY LOCATIONS SHOWN ARE FROM INFORMATION PROVIDED TO US FROM UTILITY COMPANIES. UTILITY COMPANIES MAKE NO WARRANTIES OR GUARANTEES REGARDING THE ACCURACY OF THE INFORMATION CONTAINED IN THEIR DOCUMENTS AND PROVIDES IT ONLY AS GENERAL INFORMATION TO THE RECEIVER. FOR SPECIFIC LOCATIONS DURING CONSTRUCTION CALL TOLLFREE HOTLINE 1-800-331-3666 (STATEWIDE) PRIOR TO DIGGING.

- LEGEND**
- - - - - PROPERTY LINE
 - - - - - PROPOSED SINGLE SILT FENCE, AS PER CITY OF OMAHA STANDARD PLATE NO. 101-02
 - - - - - PROPOSED WATTLE, AS PER CITY OF OMAHA STANDARD PLATE NO. 101-05
 - - - - - PROPOSED CONTOUR
 - - - - - EXISTING CONTOUR
 - [Hatched Box] STABILIZED CONSTRUCTION ENTRANCE, AS PER CITY OF OMAHA STANDARD PLATE NO. 101-04
 - (SF-#) SILT FENCE
 - (SCE-#) STABILIZED CONSTRUCTION ENTRANCE
 - (IP-#) INSTALL INLET PROTECTION AS PER CITY OF OMAHA STANDARD PLATE NO. 101-03 ON EXISTING AND PROPOSED CURB INLETS
 - (SW-#) STRAW WATTLE
 - (CW-#) CONCRETE WASHOUT AS PER CITY OF OMAHA STANDARD PLATE NO. 101-06
 - [Grey Box] CUT
 - [Light Grey Box] FILL

PROJECT NO.
EGA221022C

NO.	DESCRIPTION	DATE	BY

EHRHART GRIFFIN & ASSOCIATES

3552 Farnam Street
 Omaha, Nebraska 68131
 402 / 551-0631

- ENGINEERING
- PLANNING
- LAND SURVEYING

STORMWATER POLLUTION PREVENTION PLAN
ST. TIMOTHY'S LUTHERAN CHURCH
 510 N. 93RD STREET
 OMAHA, NEBRASKA

DATE: 07-12-2024
 DESIGNED BY: DJD
 DRAWN BY: JRB
 CHECKED BY: DJD



SHEET NO.
C5.1

S:\221022C - St Timothy's Lutheran Church\ENGINEERING\Sheets\SWPPP_221022C.dwg, 11/16/2024 10:15:59 AM

NO.	DESCRIPTION	DATE	BY

**EHRHART
GRIFFIN &
ASSOCIATES**

3552 Farnam Street
Omaha, Nebraska 68131
402 / 551-0631

- ENGINEERING
- PLANNING
- LAND SURVEYING

**STORMWATER POLLUTION
PREVENTION PLAN
ST. TIMOTHY'S LUTHERAN CHURCH
510 N. 93RD STREET
OMAHA, NEBRASKA**

DATE: 07-12-2024
DESIGNED BY: DJD
DRAWN BY: JRB
CHECKED BY: DJD



SHEET NO.
C5.2



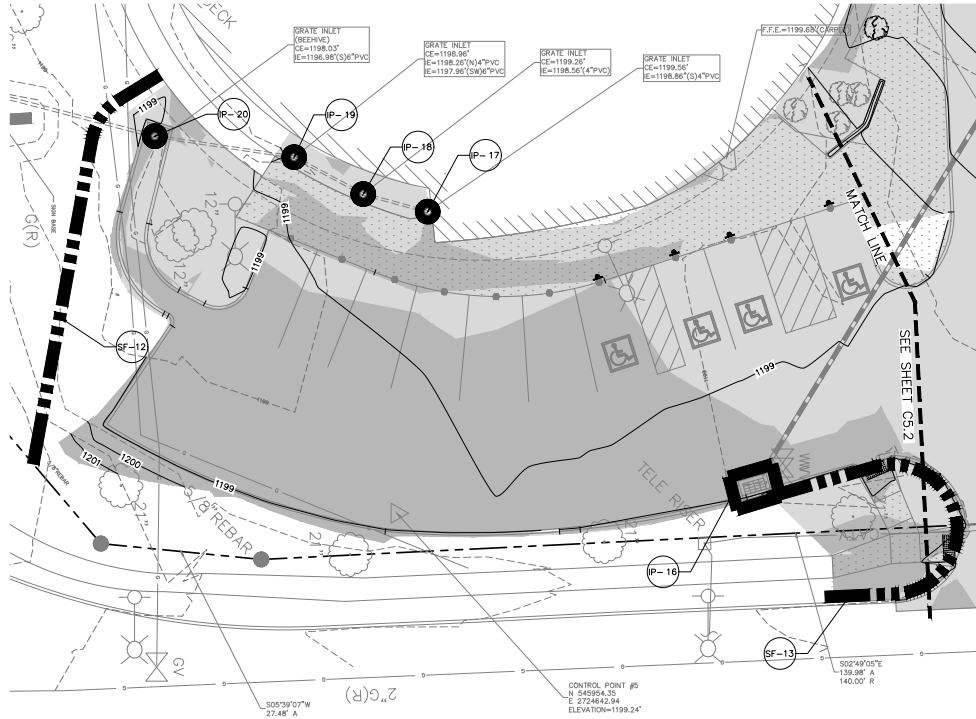
SCALE 1" = 20'



NOTE:
UNDERGROUND UTILITY LOCATIONS SHOWN ARE FROM INFORMATION PROVIDED TO US FROM UTILITY COMPANIES. UTILITY COMPANIES MAKE NO WARRANTIES OR GUARANTEES REGARDING THE ACCURACY OF THE INFORMATION CONTAINED IN THEIR DOCUMENTS AND PROVIDES IT ONLY AS GENERAL INFORMATION TO THE RECEIVER. FOR SPECIFIC LOCATIONS DURING CONSTRUCTION CALL "DIGGERS HOTLINE" 1-800-331-3666 (STATEWIDE) PRIOR TO DIGGING.

LEGEND

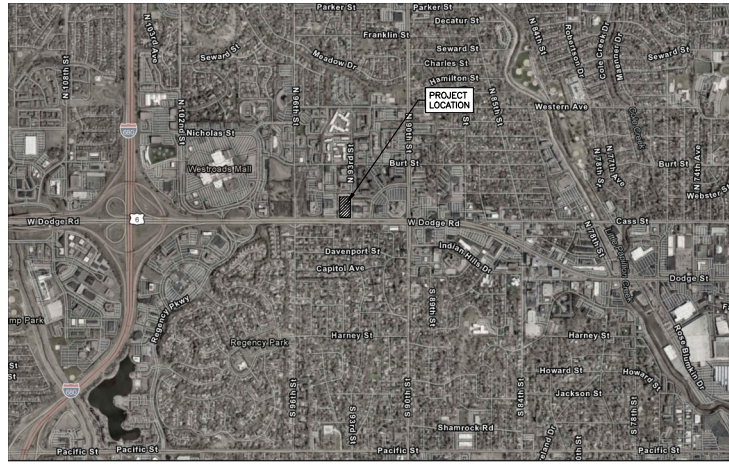
- PROPERTY LINE
- PROPOSED SINGLE SILT FENCE, AS PER CITY OF OMAHA STANDARD PLATE NO. 101-02
- PROPOSED WATTLE, AS PER CITY OF OMAHA STANDARD PLATE NO. 101-05
- PROPOSED CONTOUR
- EXISTING CONTOUR
- STABILIZED CONSTRUCTION ENTRANCE, AS PER CITY OF OMAHA STANDARD PLATE NO. 101-04
- SF-- SILT FENCE
- SCE-- STABILIZED CONSTRUCTION ENTRANCE
- IP-- INSTALL INLET PROTECTION AS PER CITY OF OMAHA STANDARD PLATE NO. 101-03 ON EXISTING AND PROPOSED CURB INLETS
- SW-- STRAW WATTLE
- CW-- CONCRETE WASHOUT AS PER CITY OF OMAHA STANDARD PLATE NO. 101-06
- CUT
- FILL



MAINTENANCE SCHEDULE

THE FOLLOWING MAINTENANCE SCHEDULE HAS BEEN PROVIDED. THE INSPECTOR MUST PERFORM THE INSPECTIONS. THE OPERATOR/CONTRACTOR MUST PERFORM ALL NEEDED MAINTENANCE. FURTHERMORE, ALL EROSION CONTROL FEATURES REQUIRING MAINTENANCE MAY NOT BE LISTED BELOW. THE OPERATOR/CONTRACTOR AND INSPECTOR MUST PERFORM THEIR RESPECTIVE DUTIES ON ALL BMPs THAT ARE NOT LISTED BELOW AS WELL.

- 1. CONSTRUCTION ENTRANCE - THE ENTRANCE SHALL BE MAINTAINED IN A CONDITION WHICH WILL PREVENT TRACKING OR FLOW OF SEDIMENT ONTO PUBLIC RIGHTS-OF-WAY...
2. SILT FENCE - THE MAINTENANCE MEASURES ARE AS FOLLOWS: (2.1) SILT FENCES SHALL BE INSPECTED IMMEDIATELY AFTER EACH RAINFALL AND AT LEAST DAILY DURING Prolonged RAINFALL...
3. STORM DRAIN INLET PROTECTION - THE MAINTENANCE MEASURES ARE AS FOLLOWS: (3.1) STRUCTURES SHALL BE INSPECTED WITH EACH ROUTINE AND RAIN INSPECTION AND REPAIRS MADE AS NECESSARY...
4. TEMPORARY DIVERSION DIKE - THE MEASURE SHALL BE INSPECTED AFTER EVERY STORM AND REPAIRS MADE TO THE DIKE, FLOW CHANNEL, OUTLET, OR SEDIMENT TRAPPING FACILITY...
5. TEMPORARY FILL DIVERSION - SINCE THE PRACTICE IS TEMPORARY AND UNDER MOST SITUATIONS WILL BE COVERED THE NEXT WORKING DAY...
6. TEMPORARY SEDIMENT TRAP - THE MAINTENANCE MEASURES ARE AS FOLLOWS: (6.1) SEDIMENT SHALL BE REMOVED AND THE TRAP RESTORED TO ITS ORIGINAL DIMENSIONS...
7. TEMPORARY SEDIMENT BASIN - THE BASIN EMBANKMENT SHOULD BE CHECKED REGULARLY TO ENSURE THAT IT IS STRUCTURALLY SOUND AND HAS NOT BEEN DAMAGED BY EROSION...
8. TEMPORARY SEEDING - AREAS WHICH FAIL TO ESTABLISH VEGETATIVE COVER ADEQUATE TO PREVENT RILL EROSION SHALL BE RE-SEED AS SOON AS SUCH AREAS ARE IDENTIFIED...
9. PERMANENT SEEDING - THE MAINTENANCE MEASURES ARE AS FOLLOWS: (9.1) IN GENERAL, A STAND OF VEGETATION CANNOT BE DETERMINED TO BE FULLY ESTABLISHED UNTIL IT HAS BEEN MAINTAINED FOR ONE FULL YEAR AFTER PLANTING...
10. MULCHING - ALL MULCHES AND SOIL COVERINGS SHOULD BE INSPECTED PERIODICALLY (PARTICULARLY AFTER RAINSTORMS) TO CHECK FOR EROSION...
11. SOIL STABILIZATION BLANKETS & MATTING - ALL SOIL STABILIZATION BLANKETS AND MATTING SHOULD BE INSPECTED PERIODICALLY FOLLOWING INSTALLATION...
12. STREET CLEANING/SWEEPING - THE MAINTENANCE MEASURES ARE AS FOLLOWS: (12.1) EVALUATE ACCESS POINTS DAILY FOR SEDIMENT TRACKING...



VICINITY MAP
EGA PROJECT NO. 221022C
SITE DEVELOPMENT: 1.46± ACRES

SWPPP INSPECTION SCHEDULE

Table with 4 columns: STAGE, STAGE 1, STAGE 2, STAGE 3, STAGE 4 (WINTER STAGE). Rows include: NO RAIN EVENT INSPECTION, WEEKLY SITE INSPECTIONS, MONTHLY SITE INSPECTIONS, and MONTHLY SITE INSPECTIONS EXCLUDING NONBUSINESS HOURS.

GENERAL NOTES

- 1. ALL OPERATORS/CONTRACTORS MUST CONFIRM WITH THE APPLICANT THAT ANY AND ALL APPLICABLE GOVERNMENTAL APPROVALS HAVE BEEN RECEIVED PRIOR TO THE START OF WORK...
2. BMPs MAY NOT BE REMOVED WITHOUT INSPECTOR AND APPLICABLE GOVERNMENTAL APPROVAL...
3. THE APPLICANT, INSPECTOR, AND CONTRACTORS/OPERATORS MUST ADHERE TO ALL POOD HOUSEKEEPING BMPs PRESENTED WITHIN THE OMAHA REGIONAL STORMWATER DESIGN MANUAL...
4. THE SWPPP DOCUMENTS (E.G., NDEE-NPDES, SWPPP-SM, SWPPP-PA, ETC.) ARE ESSENTIAL AND A REQUIREMENT IN ONE PART IS AS BINDING AS THE OTHER...

STANDARD DETAILS table with columns: NUMBER, NAME, LOCATION. Lists items such as CONSTRUCTION ENTRANCE, SILT FENCE, STORM DRAIN INLET PROTECTION, etc.

CONTRACTOR and INSPECTOR information. Contractor: TBD. Inspector: DONALD F. GOSWICK, EHRHART GRIFFIN & ASSOCIATES.

OMA-20240329-7273-P
APPLICANT SWPPP CERTIFICATION

Table for APPLICANT INFORMATION. Fields include: Business Name (ST. TIMOTHY'S LUTHERAN CHURCH), Representative's Name (DANA MESSERSCHMIDT), Address (510 NORTH 93RD STREET), City (OMAHA), State (NE), Zip Code (68114).

I hereby agree to act as APPLICANT in association with this SWPPP. Furthermore, I certify under penalty of law the following: (1) that this document and all supporting information has been prepared under my direction or supervision... (2) that I understand and agree to abide by the terms and conditions contained within this Storm Water Pollution Prevention Plan...

Signature of Dana C. Messerschmidt, dated 01/07/2024.

Table for REVISIONS with columns: NO., DESCRIPTION, DATE, BY.

EHRHART GRIFFIN & ASSOCIATES

3552 Farnam Street
Omaha, Nebraska 68131
402 / 551-0631

- ENGINEERING
PLANNING
LAND SURVEYING

NPDES GENERAL NOTES
ST. TIMOTHY'S LUTHERAN CHURCH
510 N. 93RD STREET
OMAHA, NEBRASKA

CONSTRUCTION ACTIVITIES & SCHEDULING table. Columns: ACTIVITY, SCHEDULE. Lists activities like INSTALL ALL BMPs, PROCCEED WITH REMOVALS, etc.

SITE INFORMATION table. Fields include: Project Number (OMA-20240329-7273), Project Name (ST. TIMOTHY'S LUTHERAN CHURCH), Subdivision Name (N/A), Total Site Area (3.48 acres), Disturbed Area (1.66 acres), Undisturbed Area (1.82 acres), Impervious Area Before Construction (67.0%), Impervious Area After Construction (65.6%).

APPLICANT SWPPP CERTIFICATION (continued) with signature and date.

DATE: 07-12-2024
DESIGNED BY: JUD
DRAWN BY: JRB
CHECKED BY: JUD



SHEET NO.
C5.3

REVISIONS	NO.	DESCRIPTION	DATE	BY

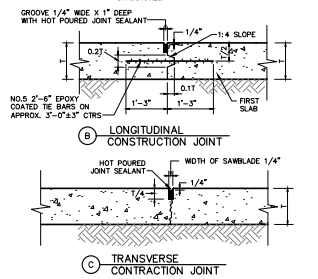
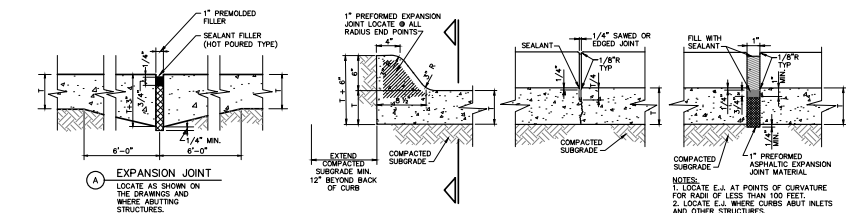
**EHRHART
GRIFFIN &
ASSOCIATES**

3552 Farnam Street
Omaha, Nebraska 68131
402 / 551-0631

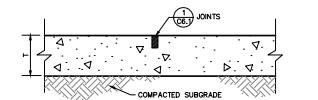
- ENGINEERING
- PLANNING
- LAND SURVEYING

MISCELLANEOUS DETAILS
ST. TIMOTHY'S LUTHERAN CHURCH
510 N. 93RD STREET
OMAHA, NEBRASKA

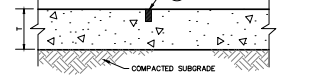
DATE: 07-12-2024
DESIGNED BY: DJD
DRAWN BY: JRB
CHECKED BY: DJD



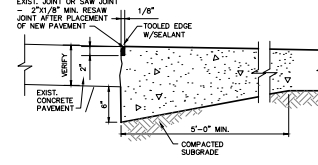
CONCRETE PAVEMENT JOINT DETAILS
C6.1 NO SCALE



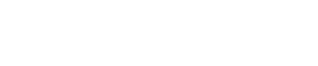
CONCRETE SIDEWALK JOINT DETAILS
C6.1 NO SCALE



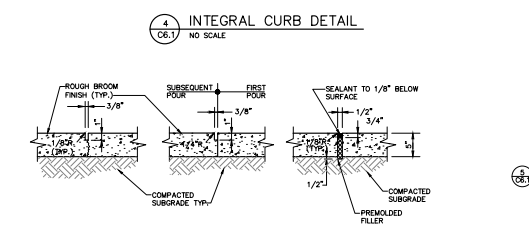
6" CONCRETE PAVEMENT
C6.1 NO SCALE



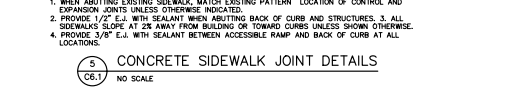
9" CONCRETE PAVEMENT
C6.1 NO SCALE



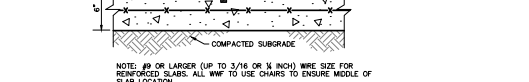
THICKENED EDGE CONCRETE PAVEMENT
C6.1 NO SCALE



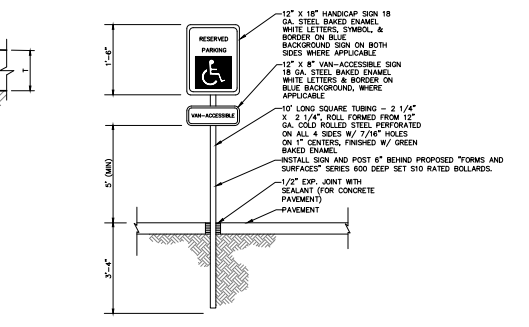
CONTRACTION JOINT, CONSTRUCTION JOINT, EXPANSION JOINT
C6.1 NO SCALE



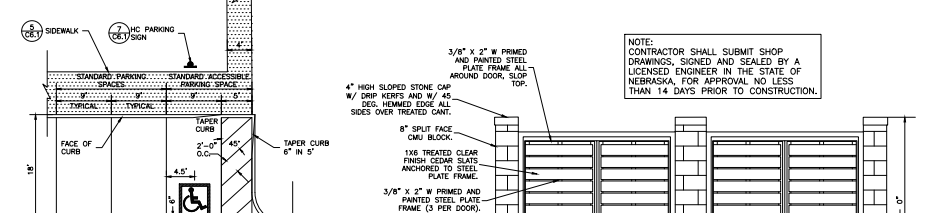
CONCRETE SIDEWALK JOINT DETAILS
C6.1 NO SCALE



6" CONCRETE PAVEMENT WITH WWF
C6.1 NO SCALE



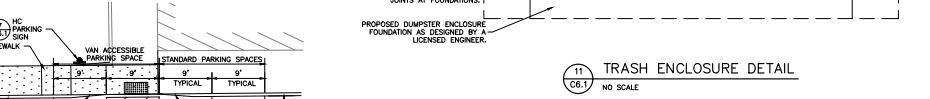
HANDICAP SIGN
C6.1 NO SCALE



90° PARKING STALL PAINT STRIPING
C6.1 NO SCALE



90° PARKING STALL PAINT STRIPING
C6.1 NO SCALE



TRASH ENCLOSURE DETAIL
C6.1 NO SCALE



CONCRETE PAVEMENT REPAIR
C6.1 NO SCALE



CONCRETE PAVEMENT REPAIR
C6.1 NO SCALE

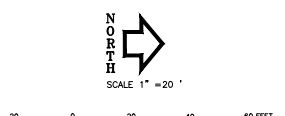
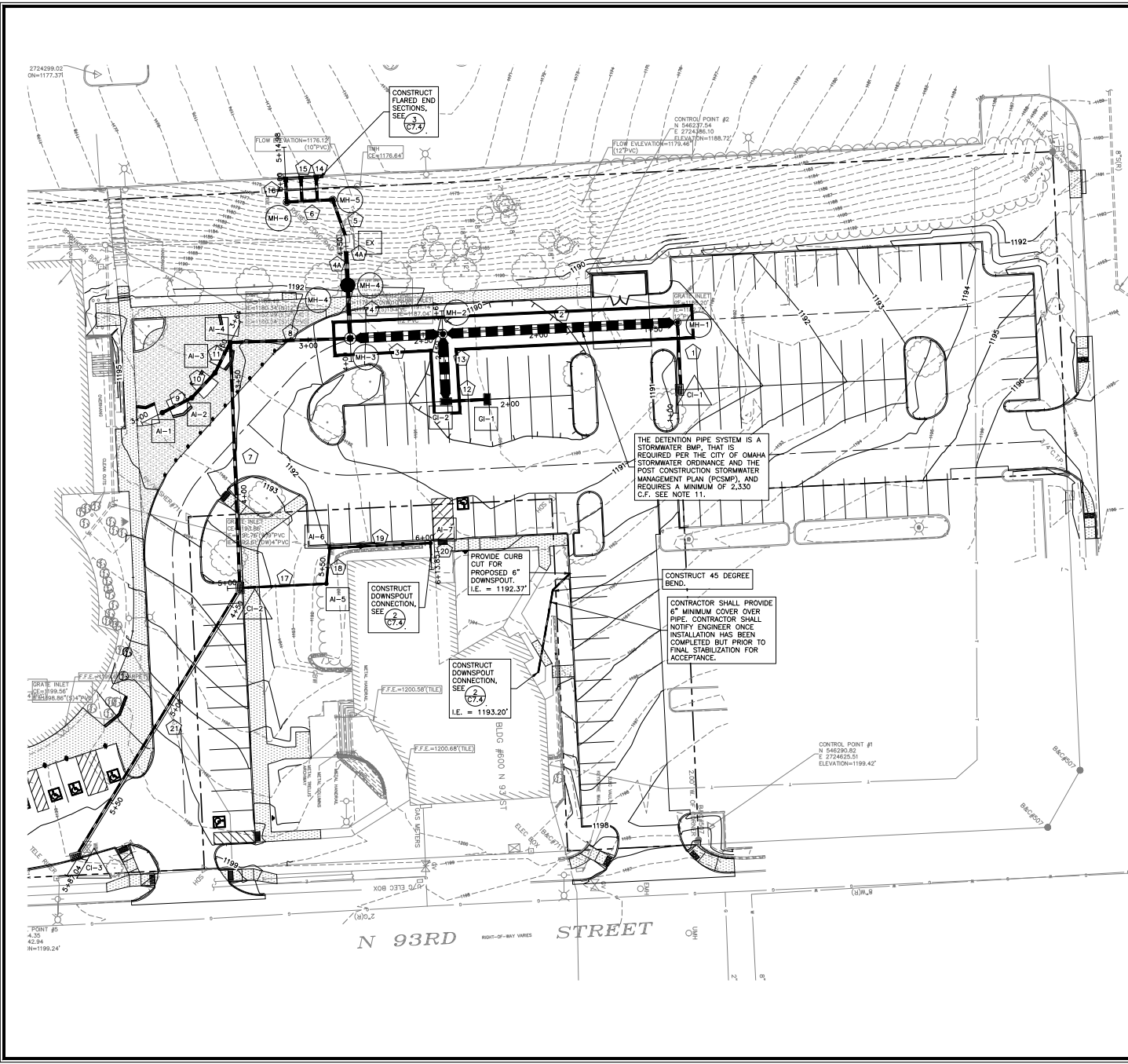


CONCRETE PAVEMENT REPAIR
C6.1 NO SCALE



CONCRETE PAVEMENT REPAIR
C6.1 NO SCALE

S:\221022C - St Timothy's Lutheran Church\ENGINEERING\Sheets\Detail - 221022C.dwg, 11/20/24, 10:16:18 AM



NOTE: UNDERGROUND UTILITY LOCATIONS SHOWN ARE FROM INFORMATION PROVIDED TO US FROM UTILITY COMPANIES. UTILITY COMPANIES MAKE NO WARRANTIES OR GUARANTEES REGARDING THE ACCURACY OF THE INFORMATION CONTAINED IN THEIR DOCUMENTS AND PROVIDES IT ONLY AS GENERAL INFORMATION TO THE READER. FOR SPECIFIC LOCATIONS DURING CONSTRUCTION CALL "DIGGER HOTLINE" 1-800-331-5666 (STATEWIDE) PRIOR TO DIGGING.

LEGEND

- PROPERTY LINE
- EXISTING CONTOUR
- - - PROPOSED CONTOUR
- STORM SEWER PIPE
- ▬ PROPOSED CURB INLET
- PROPOSED GRATE INLET
- PROPOSED AREA INLET
- PROPOSED STORM MANHOLE
- PROPOSED FIRST DEFENSE MANHOLE
- PROPOSED SEATING WALL, SEE LANDSCAPE PLANS

STORM SEWER NOTES:

1. ALL STORM SEWER CONSTRUCTION SHALL CONFORM TO THE 2015 OMAHA PLUMBING CODE AND THE CITY OF OMAHA SPECIFICATIONS FOR PUBLIC WORKS CONSTRUCTION 2024 EDITION AND ANY ADDITIONS THERETO. THE AFOREMENTIONED PUBLICATION CAN BE FOUND AT: [HTTPS://PUBLICWORKS.CITYOFOMAHA.ORG/CONTRACTORS-CONSULTANTS](https://publicworks.cityofomaha.org/contractors-consultants)
2. ALL HDPE PIPE SHALL BE ADS N-12 DUAL WALL WITH WATERTIGHT JOINTS OR APPROVED EQUIVALENT UNLESS OTHERWISE SPECIFIED.
3. ALL STORM SEWER PIPE BEDDING SHALL BE PER CITY OF OMAHA STD. PLATE NO. 701-01 OR PER MANUFACTURER'S SPECIFICATIONS AS DETERMINED BY THE ENGINEER.
4. THE CITY OF OMAHA STD. PLATES CAN BE FOUND ON-LINE AT: [HTTPS://PUBLICWORKS.CITYOFOMAHA.ORG/CONTRACTORS-CONSULTANTS](https://publicworks.cityofomaha.org/contractors-consultants)
5. COVER ELEVATION (C.E.) REPRESENTS THE TOP OF GRATE FOR AREA AND GRATE INLETS AND TOP OF CURB FOR CURB INLETS.
6. FOR DETENTION RELEASE STRUCTURE DETAILS SEE (C7.4)
7. CONTRACTOR SHALL VERIFY ELEVATION OF EXISTING STORM SEWER AT CONNECTION LOCATION PRIOR TO INSTALLING ANY STORM SEWER. IF ELEVATION DOES NOT MATCH PLANS CONTACT ENGINEER IMMEDIATELY FOR A SOLUTION.
8. CONTRACTOR SHALL SUBMIT SHOP DRAWINGS FOR STORM SEWER PIPE AND STRUCTURES TO BE APPROVED BY THE ENGINEER PRIOR TO CONSTRUCTION.
9. CONTRACTOR SHALL INVESTIGATE ALL UTILITY CROSSINGS TO CONFIRM THERE IS NOT A CONFLICT PRIOR TO CONSTRUCTION. ANY CONFLICT THAT REQUIRES A DESIGN CHANGE OR CONSTRUCTION COST INCURRED BY A UTILITY COMPANY THAT WAS NOT PROPERLY INVESTIGATED BEFORE STARTING STORM SEWER CONSTRUCTION SHALL BE PAID FOR BY THE CONTRACTOR.
10. CONTRACTOR SHALL ENSURE THE DETENTION PIPES AND HYDRODYNAMIC SEPARATOR MANHOLE ARE CONSTRUCTED PER THE ENGINEER'S DESIGN AND PROVIDE THE REQUIRED VOLUME. THIS IS REQUIRED PRIOR TO THE ENGINEER'S CERTIFICATION, WHICH IS REQUIRED IN ORDER TO OBTAIN THE CERTIFICATE OF OCCUPANCY (CO). THE CONTRACTOR SHALL NOTIFY ENGINEER ONCE INSTALLATION IS COMPLETE, BUT PRIOR TO BACKFILL TO VERIFY BASIN VOLUME. ALL COSTS FOR ADDITIONAL RECONSTRUCTION AND INSTALLATION VERIFICATION REQUIRED DUE TO INCORRECT CONSTRUCTION SHALL BE THE RESPONSIBILITY OF THE CONTRACTOR. THE CONTRACTOR SHALL GIVE THE ENGINEER NOTICE OF FINAL COMPLETION OF THE DETENTION PIPE AND STORM SEWER SYSTEM, MINIMUM TWO WEEKS PRIOR TO THE EXPECTED DATE OF THEIR REQUEST OF THE CO, TO ALLOW THE ENGINEER TIME TO CERTIFY THE BMP AND CLOSE OUT THE PCSMP PERMIT. THE ENGINEER IS NOT RESPONSIBLE FOR DELAYS IN ACQUIRING THE CO DUE TO A DELAY IN THIS NOTIFICATION.
11. SEE SHEET C7.4 FOR STORM PIPE AND STRUCTURE TABLES.

PROJECT NO.
EGA221022C

NO.	DESCRIPTION	DATE	BY

EHRHART GRIFFIN & ASSOCIATES

3552 Farnam Street
Omaha, Nebraska 68131
402 / 551-0631

- ENGINEERING
- PLANNING
- LAND SURVEYING

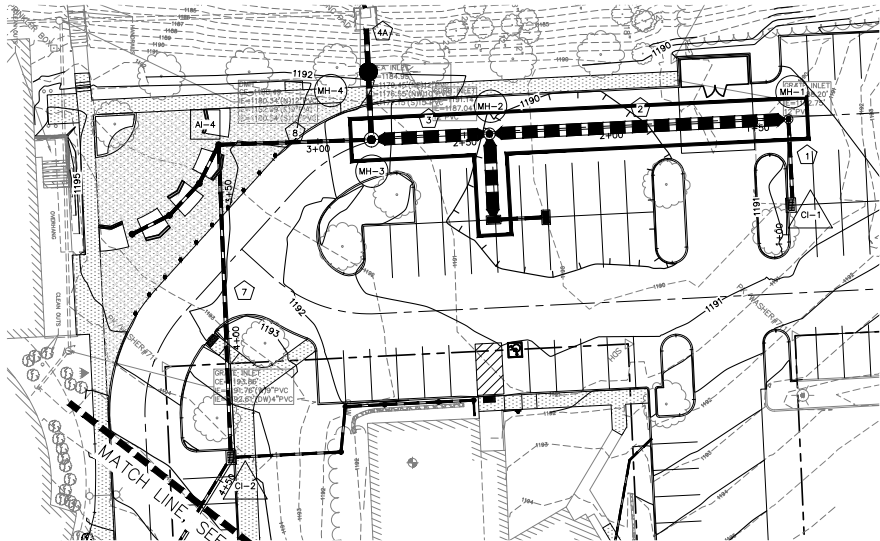
OVERALL STORM PLAN
ST. TIMOTHY'S LUTHERAN CHURCH
510 N. 93RD STREET
OMAHA, NEBRASKA

DATE: 07-12-2024
DESIGNED BY: DJD
DRAWN BY: JRB
CHECKED BY: DJD

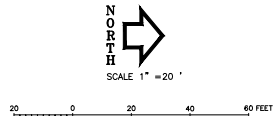


SHEET NO.
C7.1

S:\211022C - St Timothy's Lutheran Church\ENGINEERING\Sheets\Storm_211022C.dwg, 11/18/2024, 10:46:30 AM



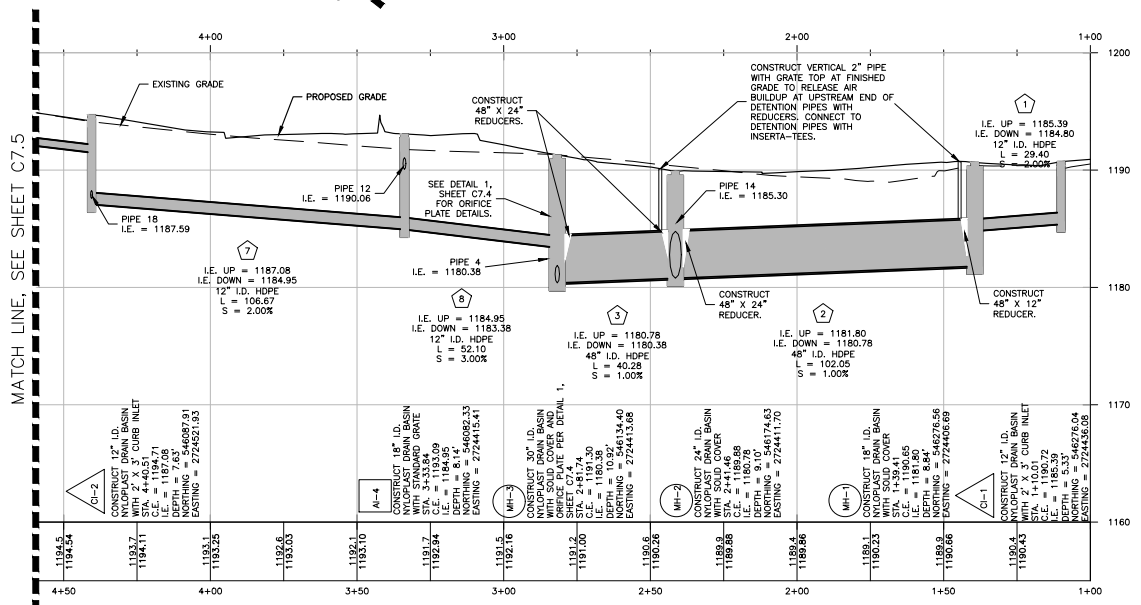
STORM 1 PLAN
SCALE 1" = 20'



NOTE: UNDERGROUND UTILITY LOCATIONS SHOWN ARE FROM INFORMATION PROVIDED TO US FROM UTILITY COMPANIES. UTILITY COMPANIES MAKE NO WARRANTIES OR GUARANTEES REGARDING THE ACCURACY OF THE INFORMATION CONTAINED IN THEIR DOCUMENTS AND PROVIDES IT ONLY AS GENERAL INFORMATION TO THE RECEIVER. FOR SPECIFIC LOCATIONS DURING CONSTRUCTION CALL "DIGGERS HOTLINE" 1-800-331-5666 (STATEWIDE) PRIOR TO DIGGING.

LEGEND

- PROPERTY LINE
- - - EXISTING CONTOUR
- - - PROPOSED CONTOUR
- STORM SEWER PIPE
- PROPOSED CURB INLET
- PROPOSED GRATE INLET
- PROPOSED AREA INLET
- PROPOSED STORM MANHOLE
- PROPOSED FIRST DEFENSE MANHOLE
- PROPOSED SEATING WALL
SEE LANDSCAPE PLANS



STORM 1 PROFILE
SCALE: HORIZONTAL 1" = 20'
VERTICAL 1" = 5'

PROJECT NO.
EGA221022C

NO.	DESCRIPTION	DATE	BY

**EHRHART
G&A
ASSOCIATES**

3552 Farnam Street
Omaha, Nebraska 68131
402 / 551-0631

- ENGINEERING
- PLANNING
- LAND SURVEYING

STORM PLAN AND PROFILES
ST. TIMOTHY'S LUTHERAN CHURCH
510 N. 93RD STREET
OMAHA, NEBRASKA

DATE: 07-12-2024
DESIGNED BY: DJD
DRAWN BY: JRB
CHECKED BY: DJD



SHEET NO.
C7.2

NO.	DESCRIPTION	DATE	BY

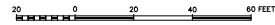
EHRHART GRIFFIN & ASSOCIATES

3552 Farnam Street
Omaha, Nebraska 68131
402 / 551-0631

- ENGINEERING
- PLANNING
- LAND SURVEYING

STORM PLAN AND PROFILES
ST. TIMOTHY'S LUTHERAN CHURCH
 510 N. 93RD STREET
 OMAHA, NEBRASKA

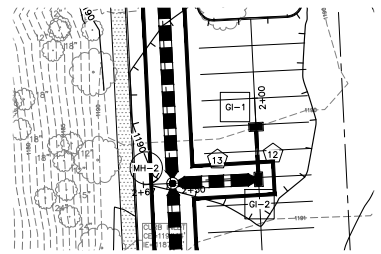
DATE: 07-12-2024
DESIGNED BY: DJD
DRAWN BY: JRB
CHECKED BY: DJD



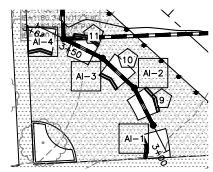
NOTE:
UNDERGROUND UTILITY LOCATIONS SHOWN ARE FROM INFORMATION PROVIDED TO US FROM UTILITY COMPANIES. UTILITY COMPANIES MAKE NO WARRANTIES OR GUARANTEES REGARDING THE ACCURACY OF THE INFORMATION CONTAINED IN THEIR DOCUMENTS AND PROVIDES IT ONLY AS GENERAL INFORMATION TO THE RECEIVER. FOR SPECIFIC LOCATIONS DURING CONSTRUCTION CALL "DIGGERS HOTLINE" 1-800-331-5666 (STATEWIDE) PRIOR TO DIGGING.

LEGEND

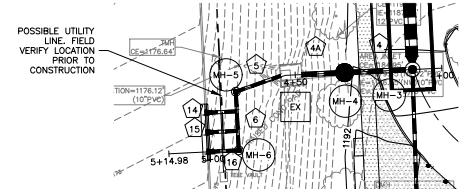
- — — — — PROPERTY LINE
- - - - - EXISTING CONTOUR
- - - - - PROPOSED CONTOUR
- — — — — STORM SEWER PIPE
- PROPOSED CURB INLET
- PROPOSED AREA INLET
- PROPOSED STORM MANHOLE
- PROPOSED FIRST DEFENSE MANHOLE
- — — — — PROPOSED SEATING WALL, SEE LANDSCAPE PLANS



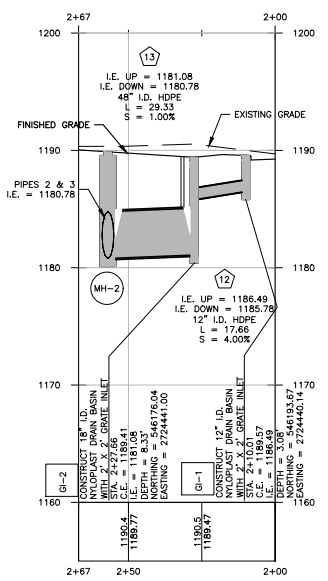
STORM 2 PLAN
SCALE 1" = 20'



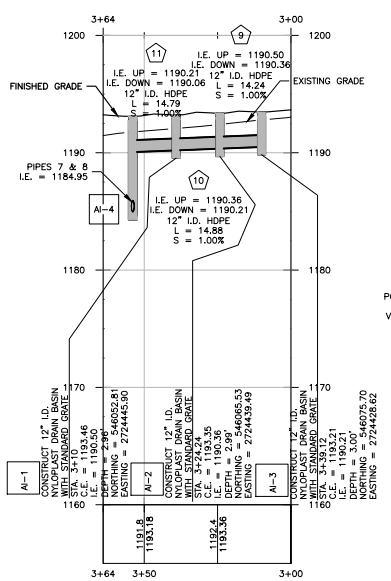
STORM 3 PLAN
SCALE 1" = 20'



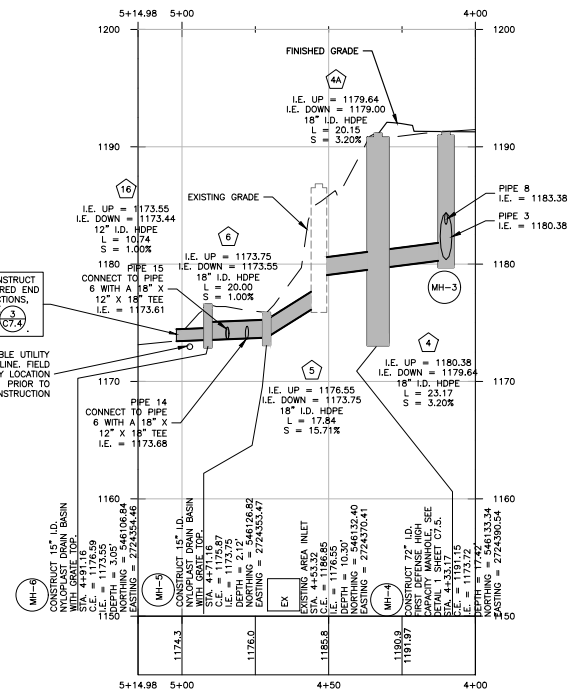
STORM 4 PLAN
SCALE 1" = 20'



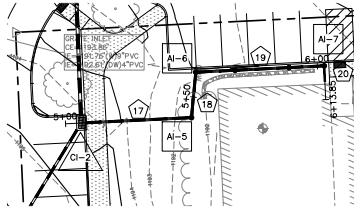
STORM 2 PROFILE
SCALE: HORIZONTAL 1" = 20'
VERTICAL 1" = 5'



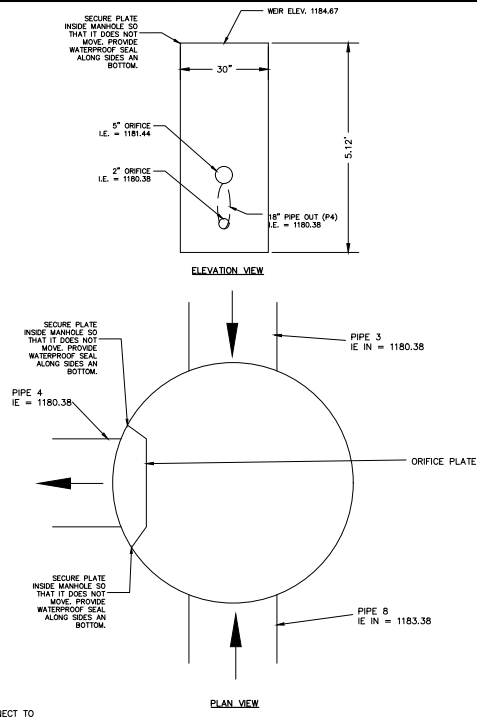
STORM 3 PROFILE
SCALE: HORIZONTAL 1" = 20'
VERTICAL 1" = 5'



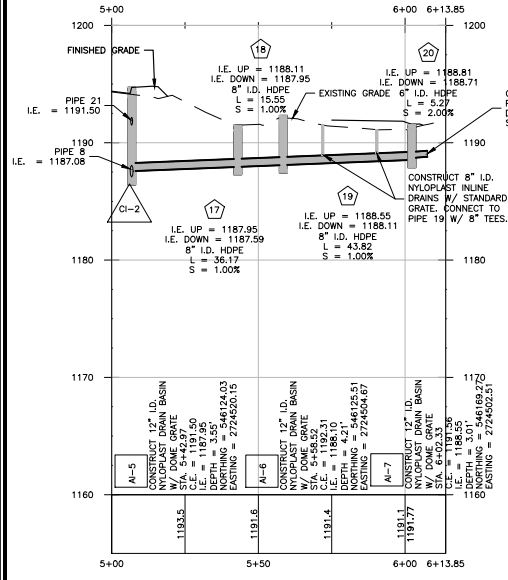
STORM 4 PROFILE
SCALE: HORIZONTAL 1" = 20'
VERTICAL 1" = 5'



STORM 5 PLAN
SCALE 1" = 20'

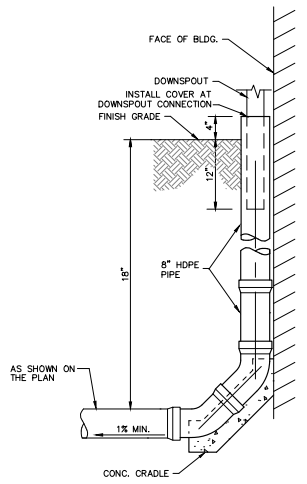


1 MH3 DETENTION OUTLET STRUCTURE DETAIL
NO SCALE



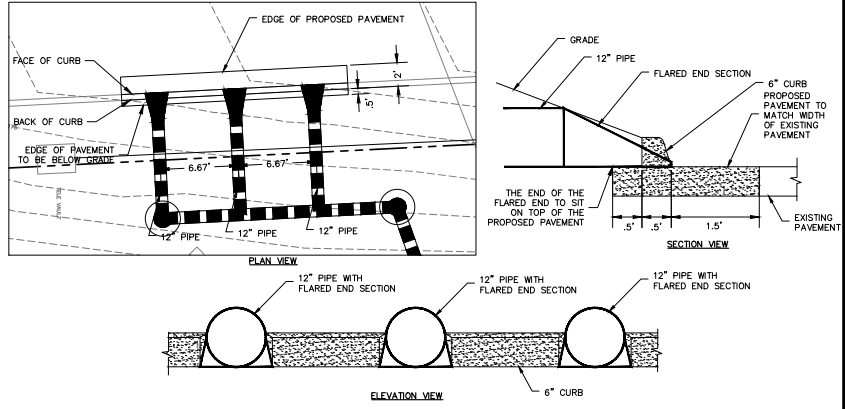
STORM 5 PROFILE
SCALE: HORIZONTAL 1" = 20'
VERTICAL 1" = 5'

2 HDPE DOWNSPOUT DRAIN DETAIL
NO SCALE



STORM SEWER STRUCTURE TABLE						
NAME	DESCRIPTION	C.E.	I.E.	DEPTH (FT)	NOTHING	EASTING
AI-1	CONSTRUCT 12" I.D. NYLOPLAST DRAIN BASIN WITH STANDARD GRATE	1193.46	1190.50	2.96	546052.81	2724445.90
AI-2	CONSTRUCT 12" I.D. NYLOPLAST DRAIN BASIN WITH STANDARD GRATE	1193.35	1190.36	2.99	546065.53	2724439.49
AI-3	CONSTRUCT 12" I.D. NYLOPLAST DRAIN BASIN WITH STANDARD GRATE	1193.21	1190.21	3.00	546075.70	2724428.62
AI-4	CONSTRUCT 18" I.D. NYLOPLAST DRAIN BASIN WITH STANDARD GRATE	1193.09	1184.95	8.14	546082.33	2724415.41
AI-5	CONSTRUCT 12" I.D. NYLOPLAST DRAIN BASIN W/ DOME GRATE	1191.50	1187.95	3.55	546124.03	2724520.15
AI-6	CONSTRUCT 12" I.D. NYLOPLAST DRAIN BASIN W/ DOME GRATE	1192.31	1188.10	4.21	546125.51	2724504.67
AI-7	CONSTRUCT 12" I.D. NYLOPLAST DRAIN BASIN W/ DOME GRATE	1191.56	1188.55	3.01	546169.27	2724502.51
CI-1	CONSTRUCT 12" I.D. NYLOPLAST DRAIN BASIN WITH 2' X 3' CURB INLET	1190.72	1185.39	5.33	546276.04	2724436.08
CI-2	CONSTRUCT 12" I.D. NYLOPLAST DRAIN BASIN WITH 2' X 3' CURB INLET	1194.71	1187.08	7.63	546087.91	2724521.93
CI-3	CONSTRUCT 12" I.D. NYLOPLAST DRAIN BASIN WITH 2' X 3' CURB INLET	1199.01	1195.65	3.36	546015.72	2724639.76
GI-1	CONSTRUCT 12" I.D. NYLOPLAST DRAIN BASIN WITH 2' X 2' GRATE INLET	1189.57	1186.49	3.08	546193.67	2724440.14
GI-2	CONSTRUCT 18" I.D. NYLOPLAST DRAIN BASIN WITH 2' X 2' GRATE INLET	1189.41	1181.08	8.33	546176.04	2724441.00
MH-1	CONSTRUCT 18" I.D. NYLOPLAST DRAIN BASIN WITH SOLID COVER	1190.65	1181.80	8.84	546276.56	2724406.69
MH-2	CONSTRUCT 24" I.D. NYLOPLAST DRAIN BASIN WITH SOLID COVER	1189.88	1180.78	9.10	546174.63	2724411.70
MH-3	CONSTRUCT 30" I.D. NYLOPLAST DRAIN BASIN WITH SOLID COVER AND ORIFICE PLATE, PER DETAIL 1, SHEET C7.4	1191.30	1180.38	10.92	546134.40	2724413.68
MH-4	CONSTRUCT 72" I.D. FIRST DEFENSE HIGH CAPACITY MANHOLE, SEE DETAIL 1, SHEET C7.5	1191.15	1173.72	17.42	546133.34	2724390.54
MH-5	CONSTRUCT 15" I.D. NYLOPLAST DRAIN BASIN WITH GRATE TOP	1175.87	1173.75	2.12	546126.82	2724353.47
MH-6	CONSTRUCT 15" I.D. NYLOPLAST DRAIN BASIN WITH GRATE TOP	1176.59	1173.55	3.05	546106.84	2724354.46

STORM SEWER PIPE TABLE						
PIPE NO.	SIZE (IN)	LENGTH (FT)	SLOPE (%)	MATERIAL	UPSTREAM STRUCTURE	DOWNSTREAM STRUCTURE
1	12	29.40	2.00%	HDPE	CI-1	MH-1
2	48	102.05	1.00%	HDPE	MH-1	MH-2
3	48	40.28	1.00%	HDPE	MH-2	MH-3
4A	18	20.15	3.20%	HDPE	MH-4	EX
4	18	23.17	3.20%	HDPE	MH-3	MH-4
5	18	17.84	15.71%	HDPE	EX	MH-5
6	18	20.00	1.00%	HDPE	MH-5	MH-6
7	12	106.67	2.00%	HDPE	CI-2	AI-4
8	12	52.10	3.00%	HDPE	AI-4	MH-3
9	12	14.24	1.00%	HDPE	AI-1	AI-2
10	12	14.88	1.00%	HDPE	AI-2	AI-3
11	12	14.79	1.00%	HDPE	AI-3	AI-4
12	12	17.66	4.00%	HDPE	GI-1	GI-2
13	48	29.33	1.00%	HDPE	GI-2	MH-2
14	12	10.77	9.01%	HDPE	12" TEE	CURB CUT
15	12	10.76	5.05%	HDPE	12" TEE	CURB CUT
16	12	10.74	1.00%	HDPE	CI-2	AI-4
17	8	36.17	1.00%	HDPE	AI-5	CI-2
18	8	15.55	1.00%	HDPE	AI-6	AI-5
19	8	43.82	1.00%	HDPE	AI-7	AI-6
20	6	5.27	2.00%	HDPE	DOWNSPOUT	AI-7
21	8	138.19	3.00%	HDPE	CI-3	CI-2



3 FLARED END SECTION OUTLET DETAIL
NO SCALE

PROJECT NO.
EGA221022C

NO.	DESCRIPTION	DATE	BY

EHRHART GRIFFIN & ASSOCIATES

3552 Farnam Street
Omaha, Nebraska 68131
402 / 551-0631

- ENGINEERING
- PLANNING
- LAND SURVEYING

STORM DETAILS
ST. TIMOTHY'S LUTHERAN CHURCH
510 N. 93RD STREET
OMAHA, NEBRASKA

DATE: 07-12-2024
DESIGNED BY: DJD
DRAWN BY: JRB
CHECKED BY: DJD



SHEET NO.
C7.4

S:\221022C - St Timothy's Lutheran Church\ENGINEERING\Sheets\Storm_221022C.dwg, 11/8/2024, 10:46:50 AM

NO.	DESCRIPTION	DATE	BY

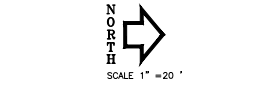
EHRHART GRIFFIN & ASSOCIATES

3552 Farnam Street
Omaha, Nebraska 68131
402 / 551-0631

- ENGINEERING
- PLANNING
- LAND SURVEYING

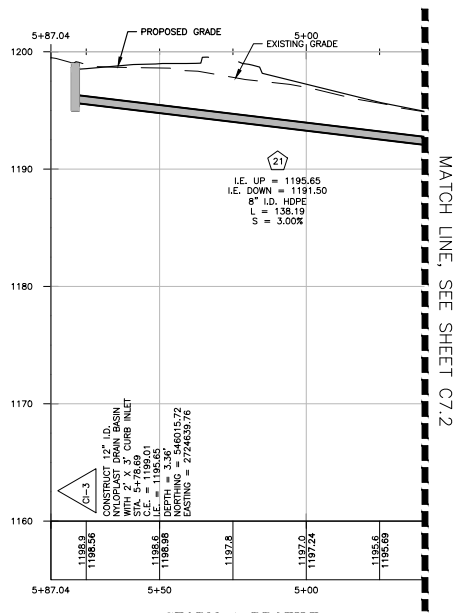
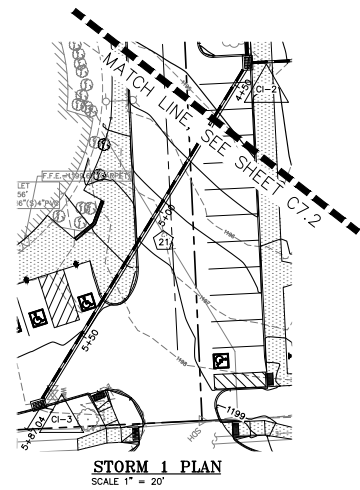
STORM DETAILS
ST. TIMOTHY'S LUTHERAN CHURCH
 510 N. 93RD STREET
 OMAHA, NEBRASKA

DATE: 07-12-2024
 DESIGNED BY: DJD
 DRAWN BY: JRB
 CHECKED BY: DJD

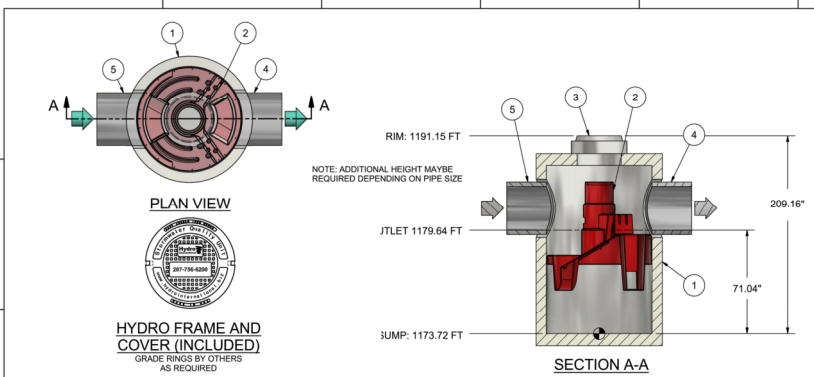


NOTE: UNDERGROUND UTILITY LOCATIONS SHOWN ARE FROM INFORMATION PROVIDED TO US FROM UTILITY COMPANIES. UTILITY COMPANIES MAKE NO WARRANTIES OR GUARANTEES REGARDING THE ACCURACY OF THE INFORMATION CONTAINED IN THEIR DOCUMENTS AND PROVIDES IT ONLY AS GENERAL INFORMATION TO THE RECEIVER. FOR SPECIFIC LOCATIONS DURING CONSTRUCTION CALL TOLLFREE HOTLINE 1-800-331-5666 (STATEWIDE) PRIOR TO DIGGING.

- LEGEND**
- PROPERTY LINE
 - - - EXISTING CONTOUR
 - PROPOSED CONTOUR
 - STORM SEWER PIPE
 - PROPOSED CURB INLET
 - PROPOSED GRATE INLET
 - PROPOSED AREA INLET
 - PROPOSED STORM MANHOLE
 - PROPOSED FIRST DEFENSE MANHOLE
 - PROPOSED SEATING WALL, SEE LANDSCAPE PLANS



STORM 1 PROFILE
 SCALE: HORIZONTAL 1" = 20'
 VERTICAL 1" = 5'



HYDRO FRAME AND COVER (INCLUDED)
 GRADE RINGS BY OTHERS AS REQUIRED

PRODUCT SPECIFICATION:
 1. PEAK HYDRAULIC FLOW: 32,004 cfs
 2. MIN SEDIMENT STORAGE CAPACITY: 1.6 yd3
 3. OIL STORAGE CAPACITY: 490.12 gal
 4. MAXIMUM INLET/OUTLET PIPE DIAMETERS: 30 in. (750 mm)
 5. THE TREATMENT SYSTEM SHALL USE AN INDUCED VORTEX TO SEPARATE POLLUTANTS FROM STORMWATER RUNOFF.

- GENERAL NOTES:**
1. General Arrangement drawings only. Contact Hydro International for site specific drawings.
 2. The diameter of the inlet and outlet pipes may be no more than 30".
 3. Multiple inlet pipes possible (refer to project plan).
 4. Inlet/outlet pipe angle can vary to align with drainage network (refer to project plan.s)
 5. Peak flow rate and minimum height limited by available cover and pipe diameter.
 6. Larger sediment storage capacity may be provided with a deeper sump depth.

ANY WARRANTIES GIVEN BY HYDRO INTERNATIONAL, WILL APPLY ONLY TO THOSE ITEMS SUPPLIED BY IT. ACCORDINGLY, HYDRO INTERNATIONAL CANNOT ACCEPT ANY RESPONSIBILITY FOR ANY STRUCTURE, PLANT, OR EQUIPMENT, OR THE PERFORMANCE THEREOF, OR OTHERWISE, MANUFACTURED, OR SUPPLIED BY ANY OTHER PARTY. HYDRO INTERNATIONAL MAKES A BEST EFFORT TO CONFORM TO THE DESIGN AND CONSTRUCTION SPECIFICATIONS. HYDRO INTERNATIONAL CANNOT ACCEPT LIABILITY FOR PERFORMANCE OF ITS EQUIPMENT. FOR ANY PART THEREOF, IF THE CONTRACTOR IS SUBJECT TO OTHERS, OTHERS ARE DESIGN SPECIFICATION, HYDRO INTERNATIONAL, OWNS THE COPYRIGHT OF THIS DRAWING, WHICH IS SUPPLIED IN CONFIDENCE. IT MUST NOT BE USED FOR ANY PURPOSE OTHER THAN THAT FOR WHICH IT IS SUPPLIED AND MUST NOT BE REPRODUCED, IN WHOLE OR IN PART, WITHOUT PRIOR PERMISSION IN WRITING FROM HYDRO INTERNATIONAL.

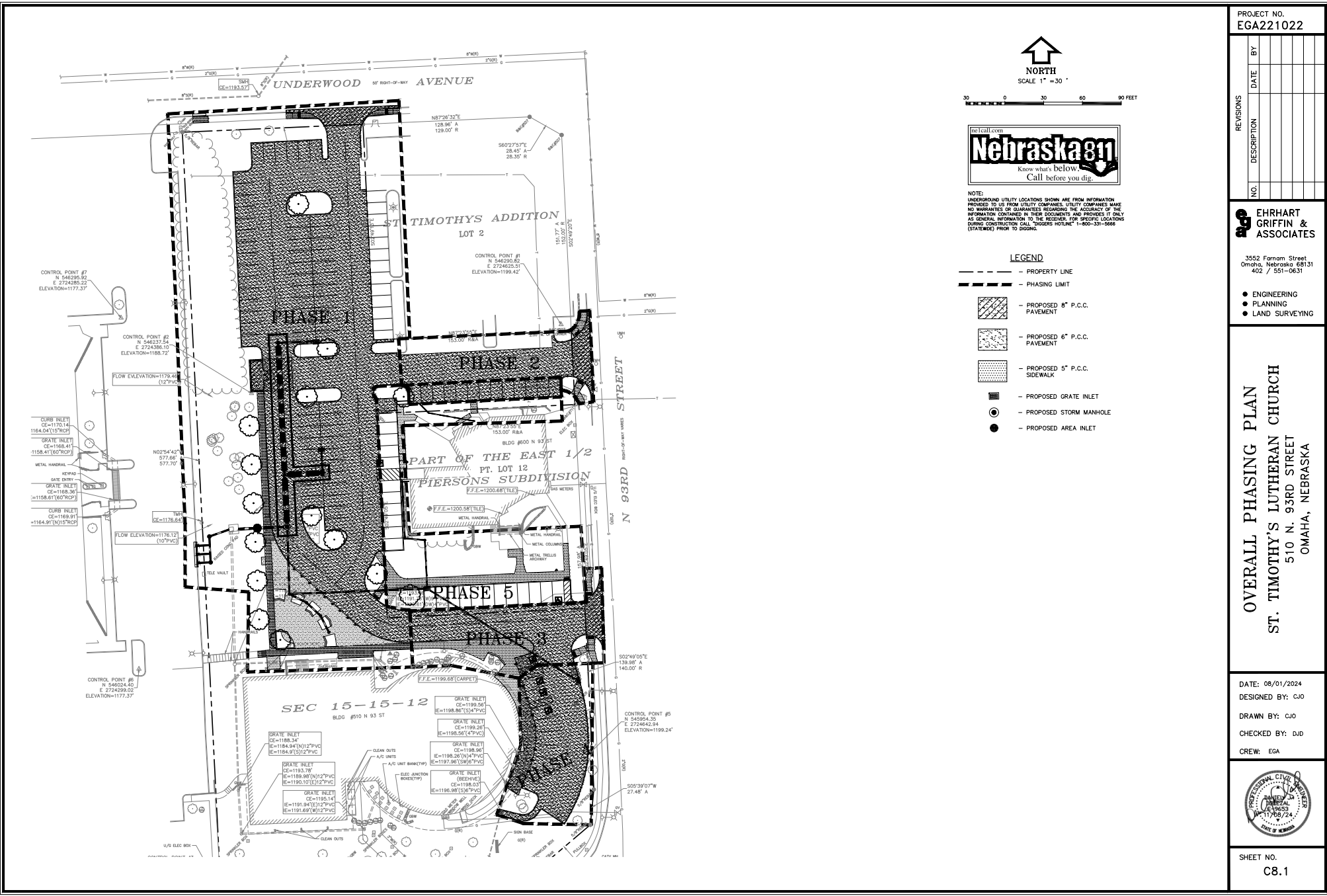
ITEM	DESCRIPTION	SIZE (in)	HEIGHT	MATERIAL
1	I.D. PRECAST MANHOLE	72		
2	INTERNAL COMPONENTS (PRE-INSTALLED)			
3	FRAME AND COVER (ROUND)	30	N/A	
4	OUTLET PIPE (BY OTHERS)	30		
5	INLET PIPE (BY OTHERS)	30		

PROJECTION

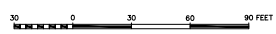
IF IN DOUBT ASK

DATE: 11/9/2024 NTS
 DRAWN BY: ER APPROVED BY: ER
 TITLE: 6 FT FIRST DEFENSE® HIGH CAPACITY
 FILE: St. Timothy's
 SHEET NO: MH-4
Hydro International
 A GIB COMPANY
 HYDRO INTERNATIONAL
 DRAWING NO: B-11 OF 1
 indel@ehgartgriff.com

1 FIRST DEFENSE HIGH CAPACITY MANHOLE DETAIL
 C7.5 NO SCALE



SCALE 1" = 30'



NOTE:
UNDERGROUND UTILITY LOCATIONS SHOWN ARE FROM INFORMATION PROVIDED TO US FROM UTILITY COMPANIES. UTILITY COMPANIES MAKE NO WARRANTIES OR GUARANTEES REGARDING THE ACCURACY OF THE INFORMATION CONTAINED IN THEIR DOCUMENTS AND PROVIDES IT ONLY AS GENERAL INFORMATION TO THE RECEIVER. FOR SPECIFIC LOCATIONS DURING CONSTRUCTION CALL "DIGGERS HOTLINE" 1-800-331-0666 (STATEWIDE) PRIOR TO DIGGING.

LEGEND

- - - - - PROPERTY LINE
- - - - - PHASING LIMIT
- [Hatched Box] - PROPOSED 8" P.C.C. PAVEMENT
- [Dotted Box] - PROPOSED 6" P.C.C. PAVEMENT
- [Cross-hatched Box] - PROPOSED 5" P.C.C. SIDEWALK
- [Square with X] - PROPOSED GRATE INLET
- [Circle with X] - PROPOSED STORM MANHOLE
- [Solid Circle] - PROPOSED AREA INLET

PROJECT NO.
EGA221022

NO.	DESCRIPTION	DATE	BY

EGE EHRHART
GRIFFIN &
ASSOCIATES

3552 Farnam Street
Omaha, Nebraska 68131
402 / 551-0631

- ENGINEERING
- PLANNING
- LAND SURVEYING

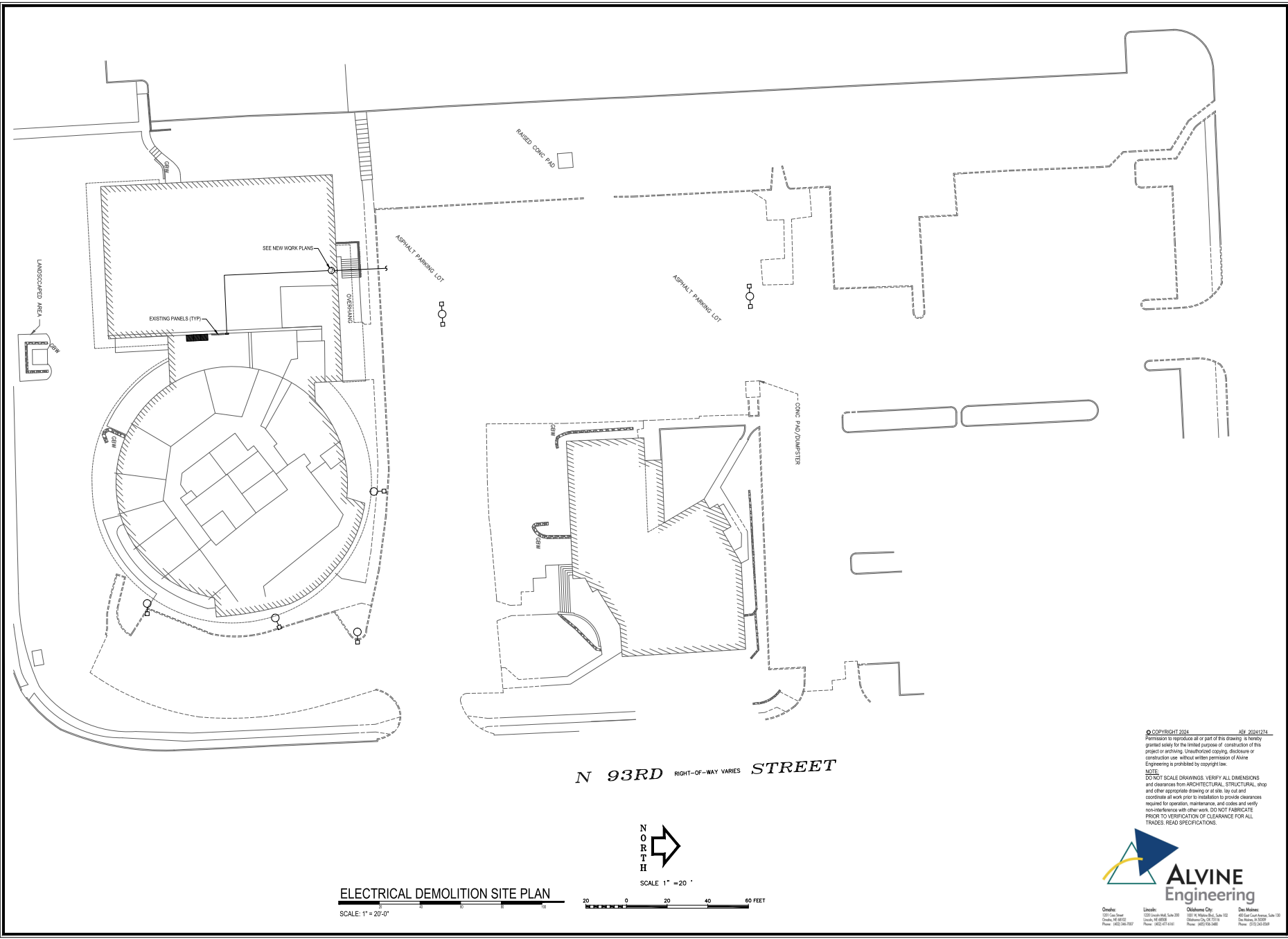
OVERALL PHASING PLAN
ST. TIMOTHY'S LUTHERAN CHURCH
510 N. 93RD STREET
OMAHA, NEBRASKA

DATE: 06/01/2024
DESIGNED BY: CJO
DRAWN BY: CJO
CHECKED BY: DJD
CREW: EGA



SHEET NO.
C8.1

S:\221022\C - St Timothy's Lutheran Church\Engineering\Sheets\Phasing Plan_221022.dwg, 11/8/2024 10:17:00 AM



PROJECT NO.
EGA221022C

NO.	DESCRIPTION	DATE	BY

EGA EHRHART
GRIFFIN &
ASSOCIATES

3552 Farnam Street
Omaha, Nebraska 68131
402 / 551-0631

- ENGINEERING
- PLANNING
- LAND SURVEYING

ST. TIMOTHY'S LUTHERAN CHURCH
510 N. 93RD STREET
OMAHA, NEBRASKA

DATE: 11-08-2024
DESIGNED BY: JW
DRAWN BY: GH
CHECKED BY: JW



CA-2169 11/08/2024

SHEET NO.
ED1.1

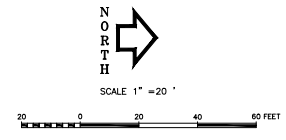
© COPYRIGHT 2024
NEB 20241274
Permission to reproduce all or part of this drawing is hereby granted solely for the limited purpose of construction of this project or archiving. Unauthorized copying, reuse or construction use without written permission of Alvine Engineering is prohibited by copyright law.

NOTE:
DO NOT SCALE DRAWINGS. VERIFY ALL DIMENSIONS and clearances from ARCHITECTURAL, STRUCTURAL, SHOP and other appropriate drawing or as-built, lay out and coordinate all work prior to installation to provide clearances required for operation, maintenance, and codes and verify non-interference with other work. DO NOT FABRICATE PRIOR TO VERIFICATION OF CLEARANCE FOR ALL TRADES. READ SPECIFICATIONS.

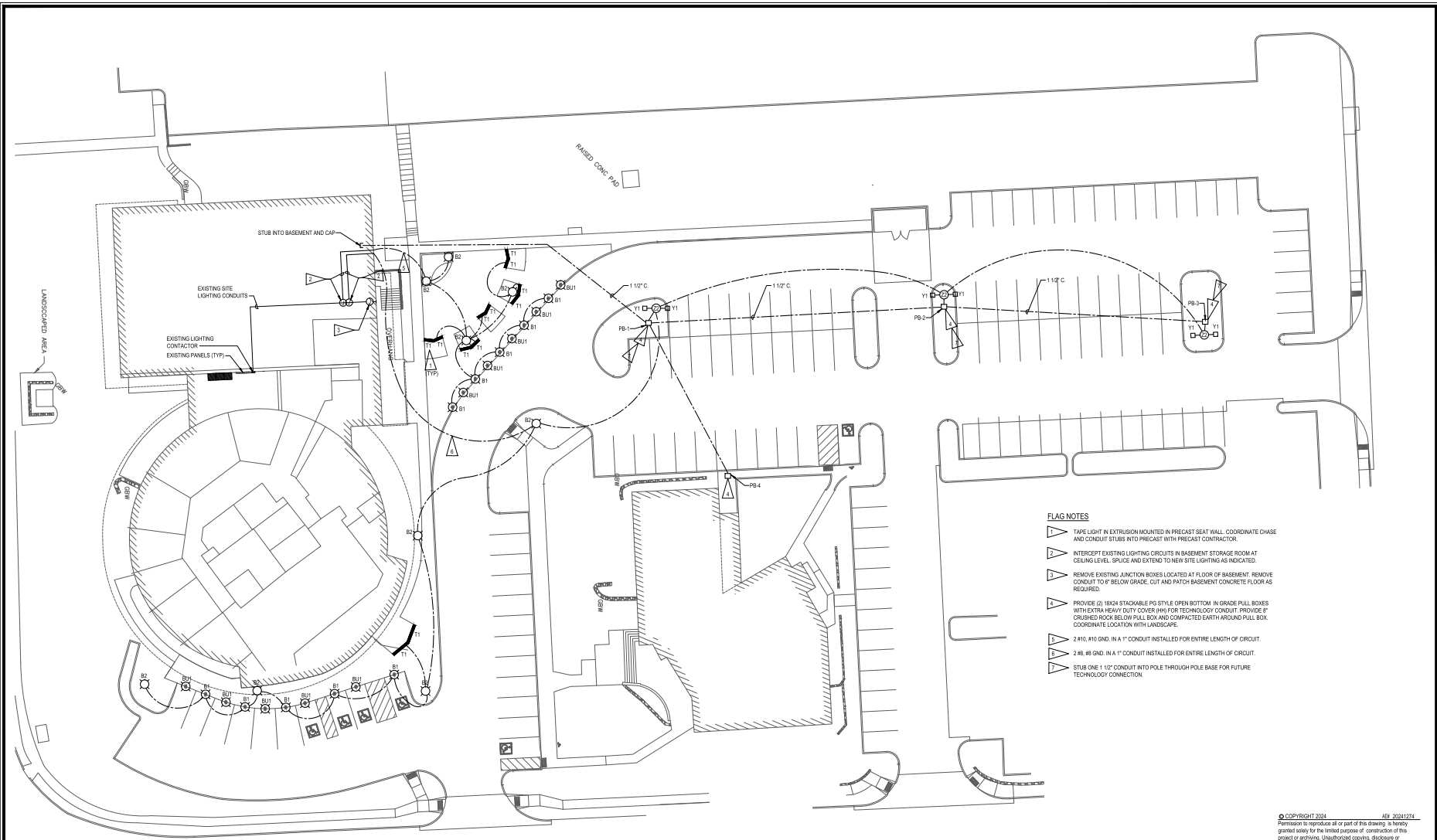


Omaha: 3215 Dodge Ave. Omaha, NE 68102 Phone: 402.556.9227
Lincoln: 1321 Lincoln Hwy. Suite 200 Lincoln, NE 68502 Phone: 402.521.6140
Oklahoma City: 4811 N. Lincoln Blvd., Suite 102 Oklahoma City, OK 73119 Phone: 405.524.2690
Des Moines: 4815 SW Cochran Ave. Suite 101 Des Moines, IA 50309 Phone: 515.281.5200

ELECTRICAL DEMOLITION SITE PLAN
SCALE: 1" = 20'-0"



Revised: 11/08/2024 11:08 AM (20241108) 11:08 am



- FLAG NOTES**
- ▽ TAPE LIGHT IN EXTRUSION MOUNTED IN PRECAST SEAT WALL. COORDINATE CHASE AND CONDUIT STUBS INTO PRECAST WITH PRECAST CONTRACTOR.
 - ▽ INTERCEPT EXISTING LIGHTING CIRCUITS IN BASEMENT STORAGE ROOM AT CEILING LEVEL. SPLICE AND EXTEND TO NEW SITE LIGHTING AS INDICATED.
 - ▽ REMOVE EXISTING JUNCTION BOXES LOCATED AT FLOOR OF BASEMENT. REMOVE CONDUIT TO 6" BELOW GRADE. CUT AND PATCH BASEMENT CONCRETE FLOOR AS REQUIRED.
 - ▽ PROVIDE (2) 18X24 STACKABLE PO. STYLE OPEN BOTTOM IN GRADE PULL BOXES WITH EXTRA HEAVY DUTY COVER (H) FOR TECHNOLOGY CONDUIT. PROVIDE 8" CRUSHED ROCK BELOW PULL BOX AND COMPACTED EARTH AROUND PULL BOX. COORDINATE LOCATION WITH LANDSCAPE.
 - ▽ 2 #10, #8 GND. IN A 1" CONDUIT INSTALLED FOR ENTIRE LENGTH OF CIRCUIT.
 - ▽ 2 #8, #8 GND. IN A 1" CONDUIT INSTALLED FOR ENTIRE LENGTH OF CIRCUIT.
 - ▽ STUB ONE 1 1/2" CONDUIT INTO POLE THROUGH POLE BASE FOR FUTURE TECHNOLOGY CONNECTION.

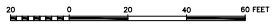
N 93RD RIGHT-OF-WAY VARIES STREET



SCALE 1" = 20'

ELECTRICAL SITE PLAN

SCALE: 1" = 20'-0"



PROJECT NO.
EGA221022C

NO.	DESCRIPTION	DATE	BY

EHRHART GRIFFIN & ASSOCIATES

3552 Farnam Street
Omaha, Nebraska 68131
402 / 551-0631

- ENGINEERING
- PLANNING
- LAND SURVEYING

ST. TIMOTHY'S LUTHERAN CHURCH
510 N. 93RD STREET
OMAHA, NEBRASKA

DATE: 11-08-2024
DESIGNED BY: JW
DRAWN BY: GH
CHECKED BY: JW



CA-2169 11/08/2024

SHEET NO.
E1.1



Omaha: 201.546.8666
Omaha, NE 68102
Phone: 402.338.3227

Lincoln: 402.426.4444
Lincoln, NE 68502
Phone: 402.471.9149

Oklahoma City: 405.476.4444
Oklahoma City, OK 73102
Phone: 405.353.3698

Des Moines: 515.281.4444
Des Moines, IA 50319
Phone: 515.281.5239

© COPYRIGHT 2024
NEB 02412974
Permission to reproduce all or part of this drawing is hereby granted solely for the limited purpose of construction of this project or archiving. Unauthorized copying, reuse, or construction use, without written permission of Alvine Engineering is prohibited by copyright law.
NOTE:
DO NOT SCALE DRAWINGS. VERIFY ALL DIMENSIONS and clearances from ARCHITECTURAL, STRUCTURAL, SHOP and other appropriate drawing or as site. Lay out and coordinate all work prior to installation to provide clearances required for operation, maintenance, and codes and verify non-interference with other work. DO NOT FABRICATE PRIOR TO VERIFICATION OF CLEARANCE FOR ALL TRADES. READ SPECIFICATIONS.

DRAWN BY: GH, DATE: 11/08/2024, PROJECT: E1.1, FILE: E1.1.dwg

ELECTRICAL SPECIFICATIONS table with columns for SECTION, PART, and various technical specifications for electrical systems.

PROJECT NO. EGA221022C

REVISIONS table with columns for NO., DESCRIPTION, DATE, and BY.

EHRHART GRIFFIN & ASSOCIATES

3552 Farnam Street Omaha, Nebraska 68131 402 / 551-0631

- ENGINEERING
PLANNING
LAND SURVEYING

ST. TIMOTHY'S LUTHERAN CHURCH
510 N. 93RD STREET
OMAHA, NEBRASKA

DATE: 11-08-2024 DESIGNED BY: JW

DRAWN BY: GH CHECKED BY: JW

COPYRIGHT 2024

Permission to reproduce all or part of this drawing... Engineering is prohibited by copyright law.

NOTE: DO NOT SCALE DRAWINGS. VERIFY ALL DIMENSIONS and clearances from ARCHITECTURAL, STRUCTURAL, SHOP and other appropriate drawings... CA-2169 11/08/2024



SHEET NO. E2.1



Omaha: 402-592-8000, Lincoln: 402-488-1621, Oklahoma City: 405-271-1199



PROJECT NO.
EGA221022C

LANDSCAPE NOTES

- LOCATE UTILITIES PRIOR TO COMMENCING LANDSCAPE OPERATIONS. TREES SHALL BE FIELD POSITIONED AS TO AVOID CONFLICTS WITH EXISTING AND PROPOSED UTILITIES. NOTIFY LANDSCAPE ARCHITECT AND OWNER OF CONFLICTS OR OBSTRUCTIONS.
- CONTRACTOR SHALL STAKE PLANTING AREAS IN THE FIELD PRIOR TO PLANTING FOR APPROVAL OF THE OWNER OR THEIR REPRESENTATIVE.
- CONTRACTOR SHALL VERIFY PLANT QUANTITIES PRIOR TO PLANTING. DISCREPANCIES WITH THE PLAN SHALL BE BROUGHT TO THE ATTENTION OF THE LANDSCAPE ARCHITECT. THE PLAN QUANTITIES SHALL SUPERCEDE SCHEDULED QUANTITIES.
- PLANT MATERIAL SHALL BE SPECIMEN QUALITY AND SHALL COMPLY WITH RECOMMENDATIONS AND REQUIREMENTS OF ANSI A60.1 'THE AMERICAN STANDARD FOR NURSERY STOCK'.
- PREPARE PLANTING BEDS AND INCORPORATE AMENDMENTS ACCORDING TO SPECIFICATIONS.
- DOUBLE GROUND HARDWOOD MULCH. PER SPECIFICATIONS SHALL BE USED AS A THREE INCH (3") TOP DRESSING IN PLANTING BEDS (PLANT MASSINGS) AND AROUND TREES AS SPECIFIED ON PLANS. SINGLE TREES AND SHRUBS SHALL BE MULCHED TO THE OUTSIDE EDGE OF THE SAUCER OR LANDSCAPE ISLAND.
- TREES SHALL BE STAKED AND GUYED PER DETAIL AND SPECIFICATIONS.
- THE LANDSCAPE CONTRACTOR SHALL NOT COMMENCE WORK UNTIL THE SITE IS FREE OF DEBRIS CAUSED BY ON-GOING CONSTRUCTION OPERATIONS. REMOVAL OF DEBRIS SHALL BE THE RESPONSIBILITY OF THE GENERAL CONTRACTOR. LANDSCAPE WORK SHALL NOT BEGIN UNTIL THE LANDSCAPE ARCHITECT AND OWNER HAVE GIVEN WRITTEN APPROVAL FOR SUCH. THERE SHALL BE NO DELAYS DUE TO LACK OF COORDINATION FOR THIS ACTIVITY.
- THE LANDSCAPE ARCHITECT AND/ OR OWNER'S REPRESENTATIVE SHALL APPROVE FINE GRADING AND CONDITION OF SITE PRIOR TO SODDING AND/OR SEEDING OPERATIONS.
- REFERENCE SPECIFICATION SECTION 32 91 00 AND 32 92 00 FOR MAINTENANCE AND WARRANTY REQUIREMENTS OF PLANTINGS, TREES, TURF, SOO, AND SEEDING.

SEEDING NOTES

- ALL TURF AREAS DISTURBED DURING CONSTRUCTION TO BE SEEDED WITH LOW MOW GRASS SEED MIX. REFERENCE SPECIFICATION 32 91 00 FOR APPROVED TYPES. SEED AT SUPPLIERS RECOMMENDED RATE.
- ALL AREAS SEEDED WITH SLOPES 3:1 OR GREATER SHALL RECEIVE EROSION CONTROL BLANKET, NORTH AMERICAN GREEN TYPE SC-75 OR APPROVED EQUAL.

SOIL PREPARATION NOTES:

- AREAS TO RECEIVE SOIL PREPARATION - DEEP CULTIVATION PER SPECIFICATION SECTIONS 32 91 13 AND 32 93 00:
 - ALL AREAS DESIGNATED FOR TURFGRASS SODDING THAT WERE AREAS FOR STORAGE, STOCKPILING, OR RECEIVED HEAVY EQUIPMENT OR REPEATED COMPACTION DUE TO MOVEMENT OF SUCH EQUIPMENT, VEHICLES OR MATERIALS.
 - ALL SHRUBS AND PERENNIAL PLANTING BEDS.
 - ALL TREE PLANTING AREAS.

GENERAL SITE NOTES

- CONTRACTOR SHALL REVIEW CONTRACT REQUIREMENTS AND PROCEDURES OUTLINED IN THE SPECIFICATIONS. THE WORK OUTLINED IN THE DRAWINGS AND SPECIFICATIONS SHALL BE INCORPORATED INTO THE GENERAL CONTRACT. THE GENERAL CONTRACTOR SHALL BE RESPONSIBLE FOR ALL MATERIALS, METHODS, AND MEANS REQUIRED TO EXECUTE THE GENERAL CONTRACT AND PROVIDE A FINISHED PRODUCT.
- IT IS THE INTENT OF THIS CONTRACT THAT ALL AREAS AFFECTED BY CONSTRUCTION BE A FINISHED AND COMPLETE PRODUCT. THEREFORE, CONTRACTOR SHALL PATCH, REPAIR, AND ADJUST AS REQUIRED TO ACHIEVE THIS FINISHED PRODUCT. CONTRACTOR SHALL PATCH AND REPAIR ALL EXISTING WORK AFFECTED OR DAMAGED BY DEMOLITION TO MATCH NEW CONSTRUCTION.
- LOCATE AND FLAG ALL UNDERGROUND PRIVATE AND PUBLIC UTILITIES PRIOR TO ANY CONSTRUCTION. ANY DAMAGE TO UTILITIES OR OTHER SITE IMPROVEMENTS CAUSED BY CONTRACTOR WILL BE REPAIRED AT NO COST TO THE OWNER.
- THE APPROXIMATE LOCATIONS OF KNOWN UTILITY MAINS AND SERVICE LINES (I.E. GAS, CABLE TV, TELEPHONE, POWER, WATER, SEWER) HAVE BEEN INDICATED ON THE OWNER PROVIDED DRAWINGS. HOWEVER, THE EXACT LOCATION MAY VARY FROM THE APPROXIMATE INDICATED LOCATIONS. THEREFORE, THE CONTRACTOR SHALL VERIFY THE EXACT LOCATIONS AND DEPTHS OF EACH UTILITY WITH THE APPROPRIATE UTILITY COMPANY PRIOR TO START OF CONSTRUCTION.
- THE CONTRACTOR SHALL HIRE AND PAY FOR A PRIVATE UTILITY LOCATOR TO PROVIDE LOCATES FOR ALL PRIVATE UTILITIES NOT IDENTIFIED BY THE UTILITY COMPANIES.
- THE CONTRACTOR SHALL BE SOLELY RESPONSIBLE FOR SECURING ALL EQUIPMENT OR MATERIALS TO REMAIN STORED ON SITE THROUGHOUT THE CONSTRUCTION PROCESS. THE OWNER IS NOT RESPONSIBLE FOR LOST, STOLEN, OR DAMAGED EQUIPMENT OR STORED MATERIALS LEFT ON SITE BY THE CONTRACTOR.
- THE CONTRACTOR IS RESPONSIBLE FOR ALL PROJECT SAFETY.
- CONTRACTOR SHALL CONTAIN ALL STAGING, STOCKPILING, AND VEHICLE MOVEMENTS WITHIN THE LIMITS DETERMINED BY OWNER PRIOR TO MOBILIZING ON SITE.

LAYOUT & DIMENSION NOTES

- DO NOT SCALE THESE DRAWINGS UNLESS NOTED. WRITTEN DATA SHALL TAKE PRECEDENCE OVER ANY OTHER DATA.
- ALIGNMENT OF CONCRETE WALKS AND SURFACED PATH SHALL BE FIELD STAKED BY CONTRACTOR. VERIFY WITH LANDSCAPE ARCHITECT PRIOR TO INSTALLATION.
- DIMENSIONS INDICATED WITH A 'W' SHALL BE VERIFIED IN THE FIELD BY THE CONTRACTOR.

PLANT SCHEDULE

SYMBOL	CODE	QTY	BOTANICAL NAME	COMMON NAME	CONT	SPACING
TREES						
	AM	5	Acer miyabei 'Winter'	State Street Maple	B & B	2' Cal.
	GS	5	Quercus bicolor 'Shademaster'	Shademaster Honey Locust	B & B	2' Cal.
	TA	4	Tilia americana	American Linden	B & B	2' Cal.
	UF	4	Ulmus 'Frontier'	Frontier Elm	B & B	1.5" Cal.
SHRUBS						
	BG	22	Buxus x 'Green Velvet'	Green Velvet Boxwood	#35 Cont.	
	GR	11	Cornus sericea	Red Twig Dogwood	#35 Cont.	
	HD	8	Hydrangea quercifolia	Oakleaf Hydrangea	#35 Cont.	
	ST	34	Spiraea betulifolia 'Tor'	White Frost™ Brodiaea Spirea	#35 Cont.	
	VE	21	Viburnum burkwoodii 'P0175'	Mira Max™ Dwarf Manchurian Viburnum	#35 Cont.	
GRASSES						
	AS	24	Andropogon scoparius 'Blue Heaven'	Little Bluestem	#1 Cont.	
	CK	22	Calamagrostis x acutiflora 'Karl Foerster'	Karl Foerster Feather Reed Grass	#1 Cont.	
	SH	23	Sporobolus heterolepis	Prairie Dropseed	#1 Cont.	
PERENNIALS						
	AB	32	Anemone x 'Blue Ice'	Blue Ice Anemone	#1 Cont.	
	NW	15	Nepeta x 'Sixasoni' 'Walker's Low'	Walker's Low Catmint	#1 Cont.	
	RA	14	Rudbeckia amplexicaulis 'Goldstrut'	Black-eyed Susan	#1 Cont.	
	SS	32	Salvia nemorosa 'FloraSilber'	Sensation® Deep Blue Meadow Sage	#1 Cont.	
	SD	46	Sedum x 'Dazzleberry'	Dazzleberry Stonecrop	#1 Cont.	
GROUND COVERS						
		4,722 sf	Conservation Seed Mix	Stock Seed Conservation Mix (Spring)	seed	
		2,821 sf	Turf Sod	Drought Tolerant Fescue Blend	sod	
			Trench Edge, 041,400.			

NO.	DESCRIPTION	DATE	BY

EHRHART GRIFFIN & ASSOCIATES

3552 Farnam Street
Omaha, Nebraska 68131
402 / 551-0631

- ENGINEERING
- PLANNING
- LAND SURVEYING

LANDSCAPE NOTES

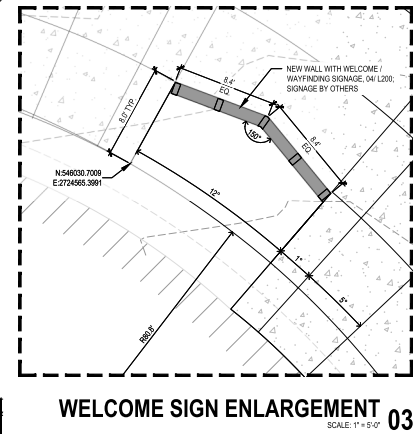
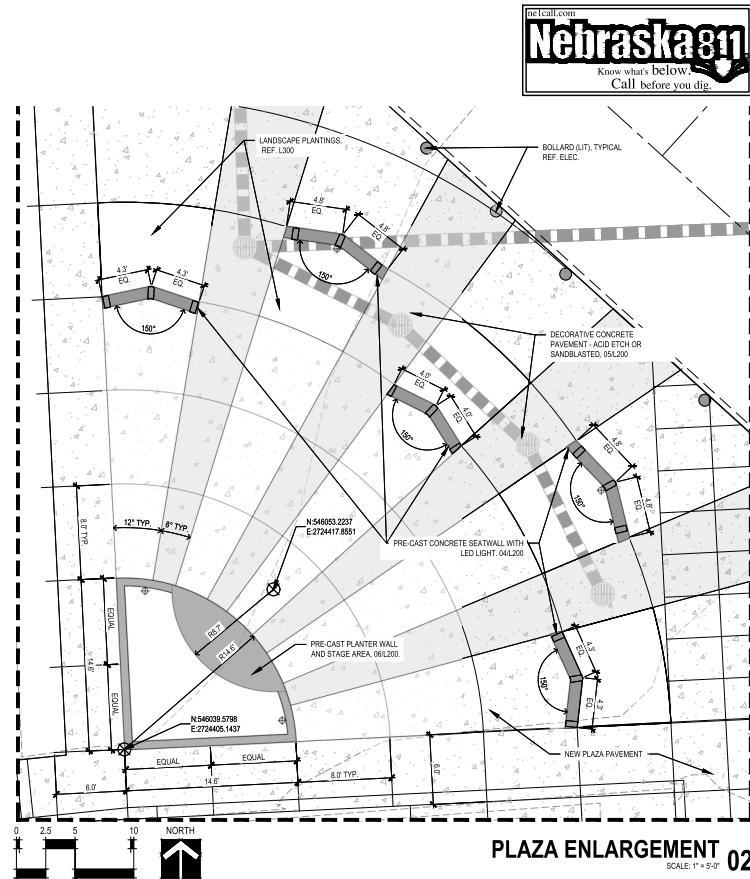
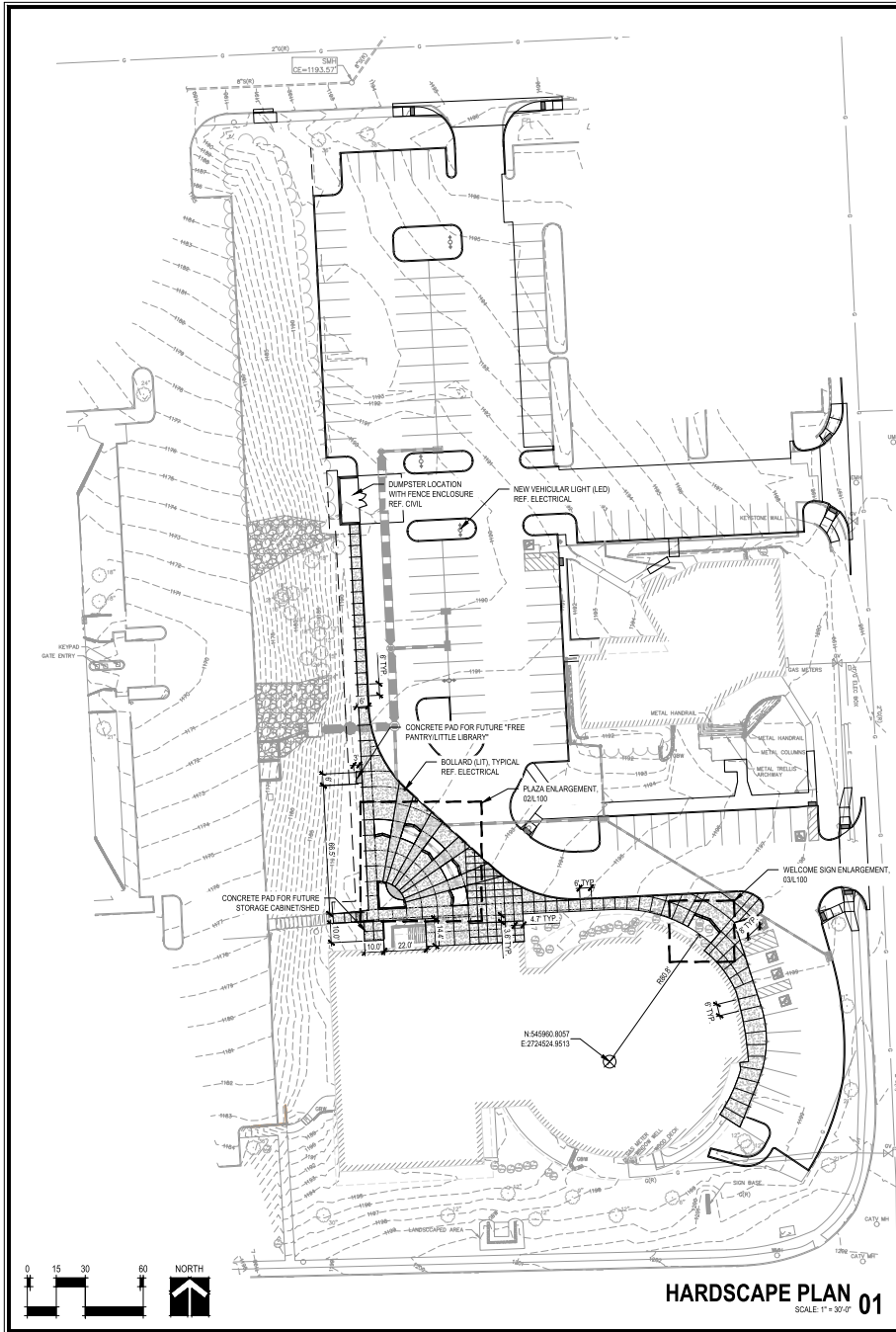
ST. TIMOTHY'S LUTHERAN CHURCH
510 N. 93RD STREET
OMAHA, NEBRASKA

DATE: 07-12-2024
 DESIGNED BY: MJH
 DRAWN BY: JDC
 CHECKED BY: REF



1111 N. 13th Street Suite 116
Omaha, NE 68132
www.vireo.com

SHEET NO.
L000



PROJECT NO.
EGA221022C

NO.	DESCRIPTION	DATE	BY

EHRHART GRIFFIN & ASSOCIATES
3552 Farnam Street
Omaha, Nebraska 68131
402 / 551-0631

- ENGINEERING
- PLANNING
- LAND SURVEYING

HARDSCAPE PLAN
ST. TIMOTHY'S LUTHERAN CHURCH
510 N. 93RD STREET
OMAHA, NEBRASKA

DATE: 07-12-2024
DESIGNED BY: MJH
DRAWN BY: JDC
CHECKED BY: REF



SHEET NO.
L100



1111 N. 13th Street Suite 116
Omaha, NE 68132
www.vireo.com



PROJECT NO.
EGA221022C

NO.	DESCRIPTION	DATE	BY

EHRHART GRIFFIN & ASSOCIATES

3552 Farnam Street
Omaha, Nebraska 68131
402 / 551-0631

- ENGINEERING
- PLANNING
- LAND SURVEYING

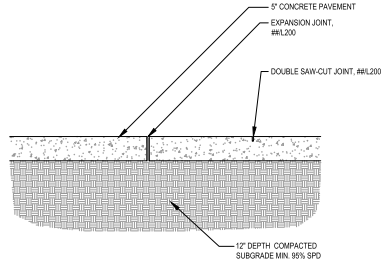
SITE DETAILS

ST. TIMOTHY'S LUTHERAN CHURCH
510 N. 93RD STREET
OMAHA, NEBRASKA

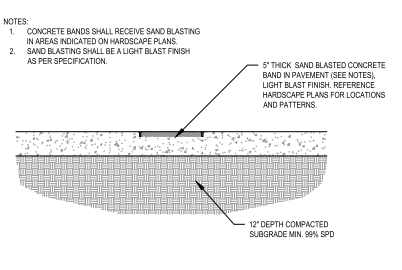
DATE: 07-12-2024
DESIGNED BY: MJH
DRAWN BY: JDC
CHECKED BY: REF



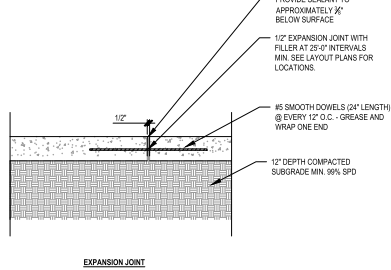
SHEET NO.
L200



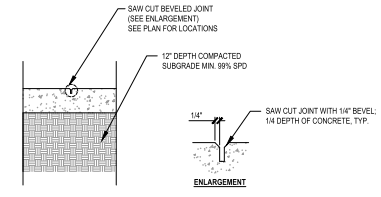
4 INCH CONCRETE PAVING 01
N.T.S.



DECORATIVE CONCRETE PAVEMENT 02
N.T.S.



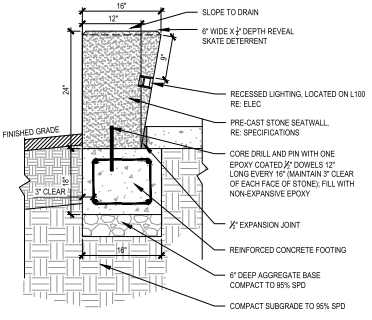
EXPANSION JOINT



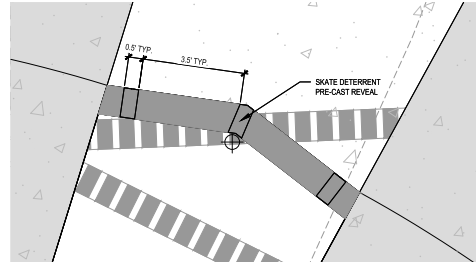
CONTRACTION JOINT

CONCRETE JOINTING 03
N.T.S.

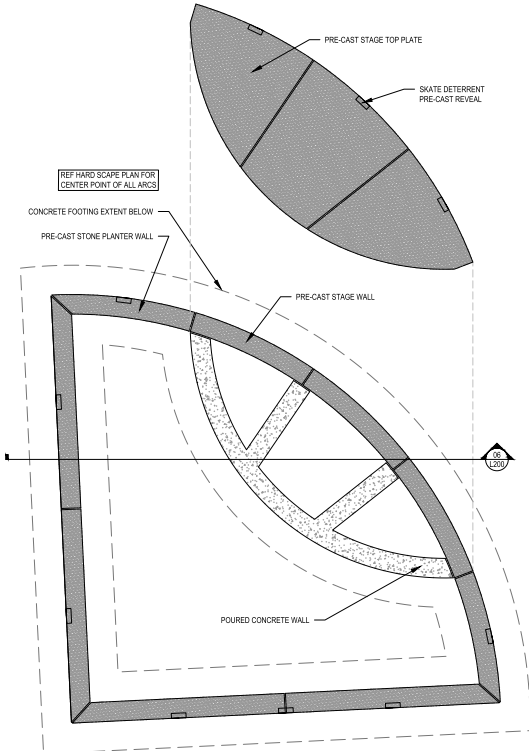
- NOTES:
- CONTRACTOR SHALL SUBMIT SHOP DRAWINGS SHOWING PRE-CAST STONE SEATWALL LAYOUT, UNIT SIZES, DETAILED SECTIONS AND PROFILES FOR ALL ITEMS. THE DRAWINGS SHALL SHOW ALL REINFORCING, HARDWARE, AND ATTACHMENT METHODS.
 - COLOR OF SEATWALL: TBD.
 - CONTRACTOR SHALL SUBMIT SAMPLES OF PRE-CAST STONE FOR COLOR AND TEXTURE REVIEW AND APPROVAL PRIOR TO FABRICATION.
 - SECTIONS SHALL NOT EXCEED 4'-0" IN LENGTH.



PRE-CAST CONCRETE SEATWALL 04
N.T.S.



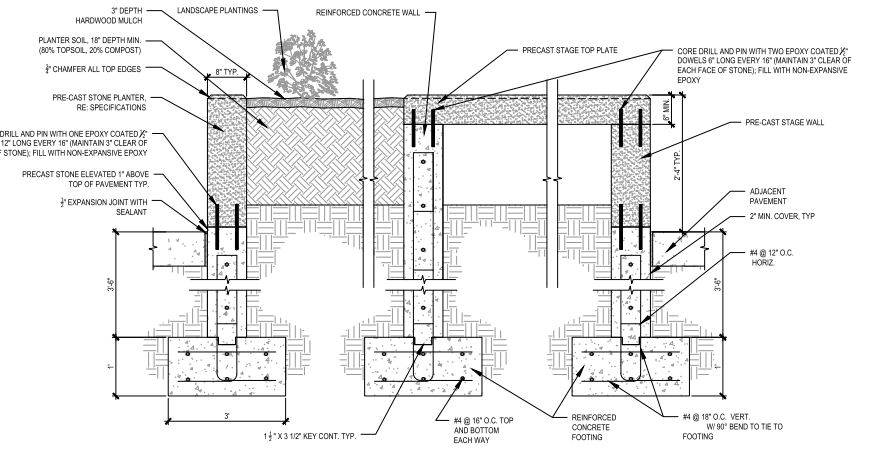
TYP. SEATWALL REVEAL 05
1" = 2'-0"



PLANTER AND STAGE AREA JOINT DETAIL 07
N.T.S.

POURED CONCRETE PLANTER WALL NOTES:
EXPOSED FACES OF WALL SHALL RECEIVE A 1/4" BOARD FORM FINISH AS PER CONCRETE INDUSTRY BEST PRACTICES UNLESS NOTED OTHERWISE ON PLANS.

- PRE-CAST WALL NOTES:**
- CONTRACTOR SHALL SUBMIT SHOP DRAWINGS SHOWING PRE-CAST STONE PLANTER AND STAGE LAYOUT, UNIT SIZES, DETAILED SECTIONS AND PROFILES FOR ALL ITEMS. THE DRAWINGS SHALL SHOW ALL REINFORCING, HARDWARE, AND ATTACHMENT METHODS.
 - COLOR OF SEATWALL: TBD.
 - CONTRACTOR SHALL SUBMIT SAMPLES OF PRE-CAST STONE FOR COLOR AND TEXTURE REVIEW AND APPROVAL PRIOR TO FABRICATION.
 - SECTIONS SHALL NOT EXCEED 4'-0" IN LENGTH.



PRE-CAST PLANTER WALL AND STAGE AREA 06
N.T.S.



1111 N. 13th Street Suite 116
Omaha, NE 68132
www.vireo.com

PLANT LEGEND

CODE	BOTANICAL NAME	COMMON NAME
TREES		
AM	Acer nyssaei 'Morton'	State Street Maple
GS	Gleditsia triacanthos inermis 'Shademaster'	Shademaster Honey Locust
TA	Tilia americana	American Linden
UF	Ulmus 'Frontier'	Frontier Elm
SHRUBS		
BG	Buxus x 'Green Velvet'	Green Velvet Boxwood
CR	Cornus sericea	Red Twig Dogwood
HQ	Hydrangea quercifolia	Oakleaf Hydrangea
ST	Spiraea vanutika 'Tor'	White Flower® Spirea
VE	Viburnum butepastorum 'P9175'	Mini Man™ Dwarf Manchurian Viburnum
GRASSES		
AS	Andropogon scoparius 'Blue Heaven'	Little Bluestem
CK	Calamagrostis x acutiflora 'Karl Foerster'	Karl Foerster Feather Reed Grass
SH	Sporobolus heterolepis	Prairie Dropseed
PERENNIALS		
AB	Anemone x 'Blue Ice'	Blue Ice Bluestar
NV	Nepeta x 'Fassen's' 'Walker's Low'	Walker's Low Catmint
RA	Rudbeckia amplexicaulis 'Goldsturm'	Black-eyed Susan
SS	Salsola nemoralis 'Thronskiller'	Sensational Deep Blue Meadow Sage
SD	Sedum x 'Dazzleberry'	Dazzleberry Stonecrop
SYMBOL BOTANICAL NAME COMMON NAME		
GROUND COVERS		
[Pattern]	Conservation Seed Mix	Stock Seed Conservation Mix (Spring)
[Pattern]	Turf Sod	Drought Tolerant Fescue Blend



PROJECT NO.
EGA221022C

NO.	DESCRIPTION	DATE	BY

EHRHART GRIFFIN & ASSOCIATES

3552 Farnam Street
Omaha, Nebraska 68131
402 / 551-0631

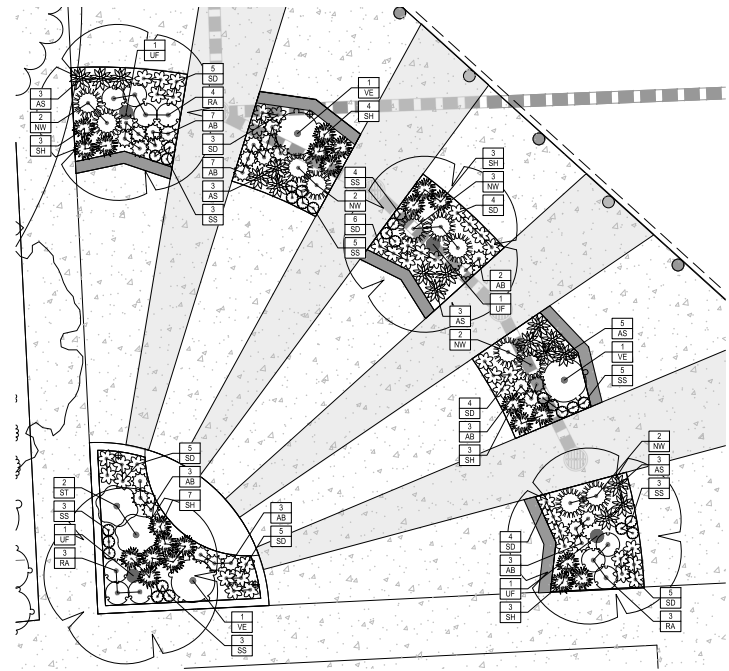
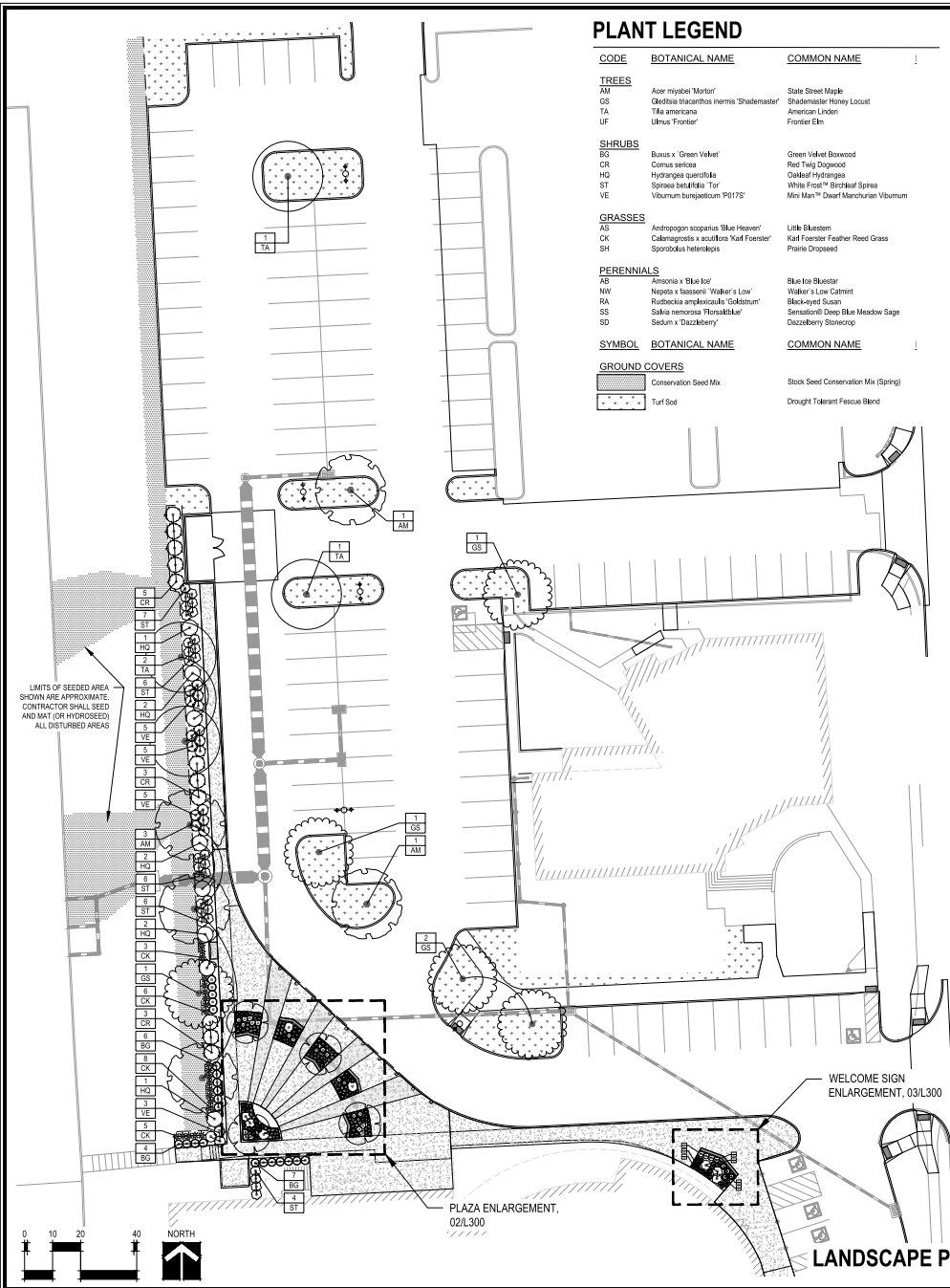
- ENGINEERING
- PLANNING
- LAND SURVEYING

LANDSCAPE PLAN
ST. TIMOTHY'S LUTHERAN CHURCH
510 N. 93RD STREET
OMAHA, NEBRASKA

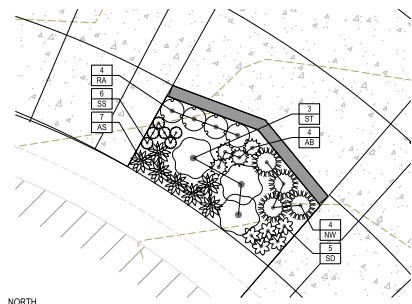
DATE: 07-12-2024
DESIGNED BY: MJH
DRAWN BY: JDC
CHECKED BY: REF



SHEET NO.
L300



PLAZA ENLARGEMENT 02
1"=50'

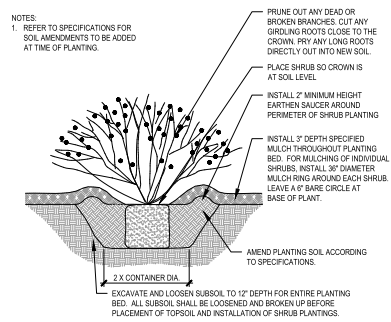


WELCOME SIGN ENLARGEMENT 03
1"=50'

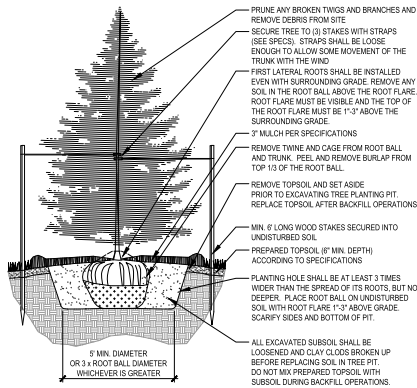
LANDSCAPE PLAN 01
1"=20.0'



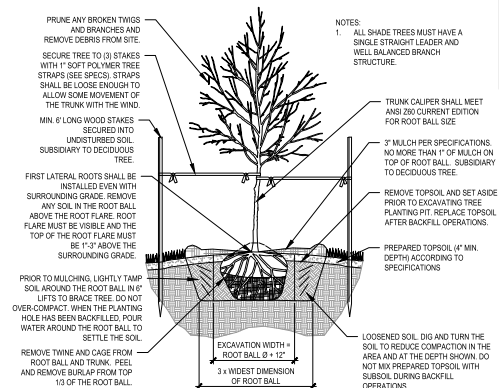
1111 N. 13th Street Suite 116
Omaha, NE 68132
www.vireo.com



SHRUB PLANTING DETAIL 01
N.T.S.



CONIFEROUS TREE 02
N.T.S.



DECIDUOUS TREE DETAIL 03
N.T.S.



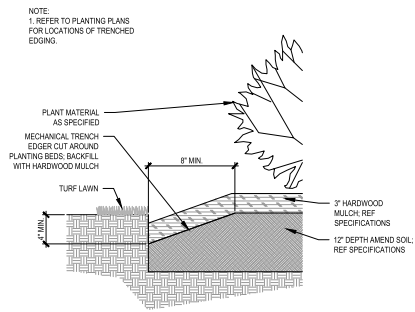
PROJECT NO.
EGA221022C

NO.	DESCRIPTION	DATE	BY

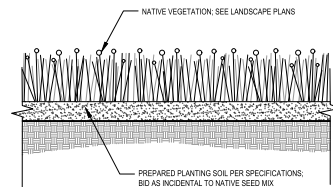
EHRHART GRIFFIN & ASSOCIATES

3552 Farnam Street
Omaha, Nebraska 68131
402 / 551-0631

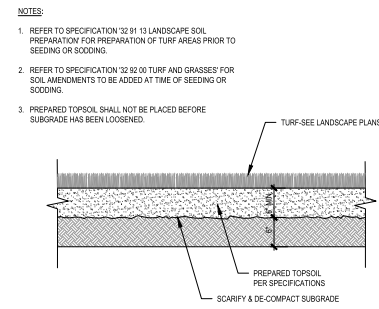
- ENGINEERING
- PLANNING
- LAND SURVEYING



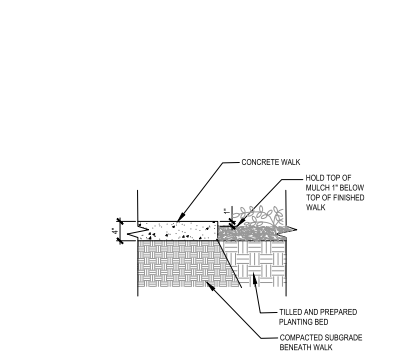
TRENCH EDGE DETAIL 04
N.T.S.



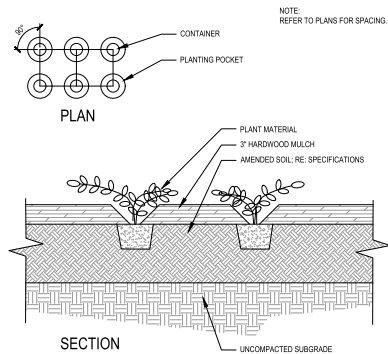
NATIVE GRASS DETAIL 05
N.T.S.



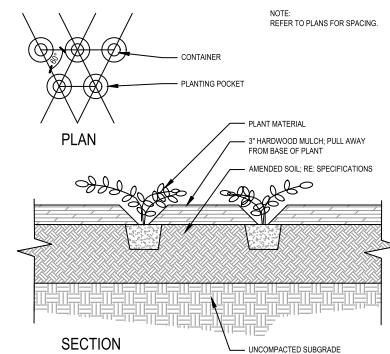
TURF GRASS DETAIL 06
N.T.S.



MULCH BED DETAIL 07
N.T.S.



CONTAINER PLANT - SQUARE SPACING DETAIL 08
N.T.S.



CONTAINER PLANT - TRIANGLE SPACING DETAIL 09
N.T.S.

LANDSCAPE DETAILS

ST. TIMOTHY'S LUTHERAN CHURCH
510 N. 93RD STREET
OMAHA, NEBRASKA

DATE: 07-12-2024
DESIGNED BY: MJH
DRAWN BY: JDC
CHECKED BY: REF



1111 N. 13th Street Suite 116
Omaha, NE 68132
www.vireo.com

SHEET NO.
L400